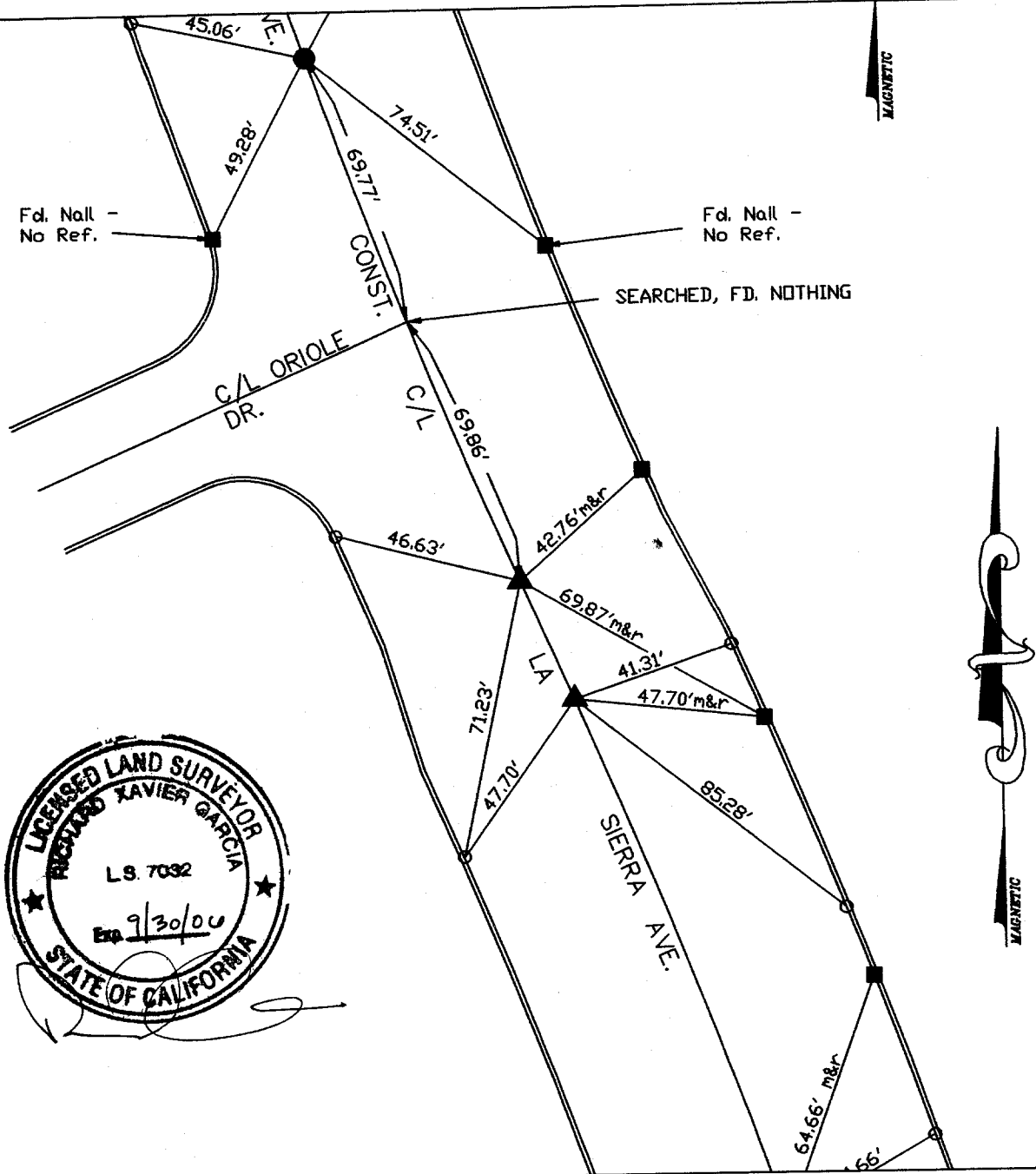


10717.TIF

STREET CA SIERRA AVE X-STREET ORIOLE DR

OFFICIAL USE ONLY



Legend

- - Found LD. & TK. on T/C
- - Set LD. & TK. on T/C
- - Found "C" Nail on T/C per City Tie Sheet 4801.TIF unless noted otherwise.
- - Found 1" LP. w/R.C.E. 13116 P.P. finish, Destroyed during construction. Re-set 1" LP. w/ L.S.7032 P.P., finish per tics.
- ▲ - Found 1" LP. w/R.C.E. 13116 P.P. finish, Destroyed during construction. Re-set Spike & Washer stamped L.S.7032, finish per tics.

Scale: 1" = 40'

Date: 04/02/02

Drawn by: R.G.

F. B.: 1032-2/2

W.O.: 1032-2

OFFICIAL TIE PLAT

CITY OF RIVERSIDE

GPS SURVEYING

P.O. BOX 3776 ONTARIO, CA 91761

These ties are for the purpose of perpetuating the found monumentation. No claim is made as to the relationship of the points or lines shown hereon to true boundary locations.

SHEET

1

OF 1 SHEETS

File No.: