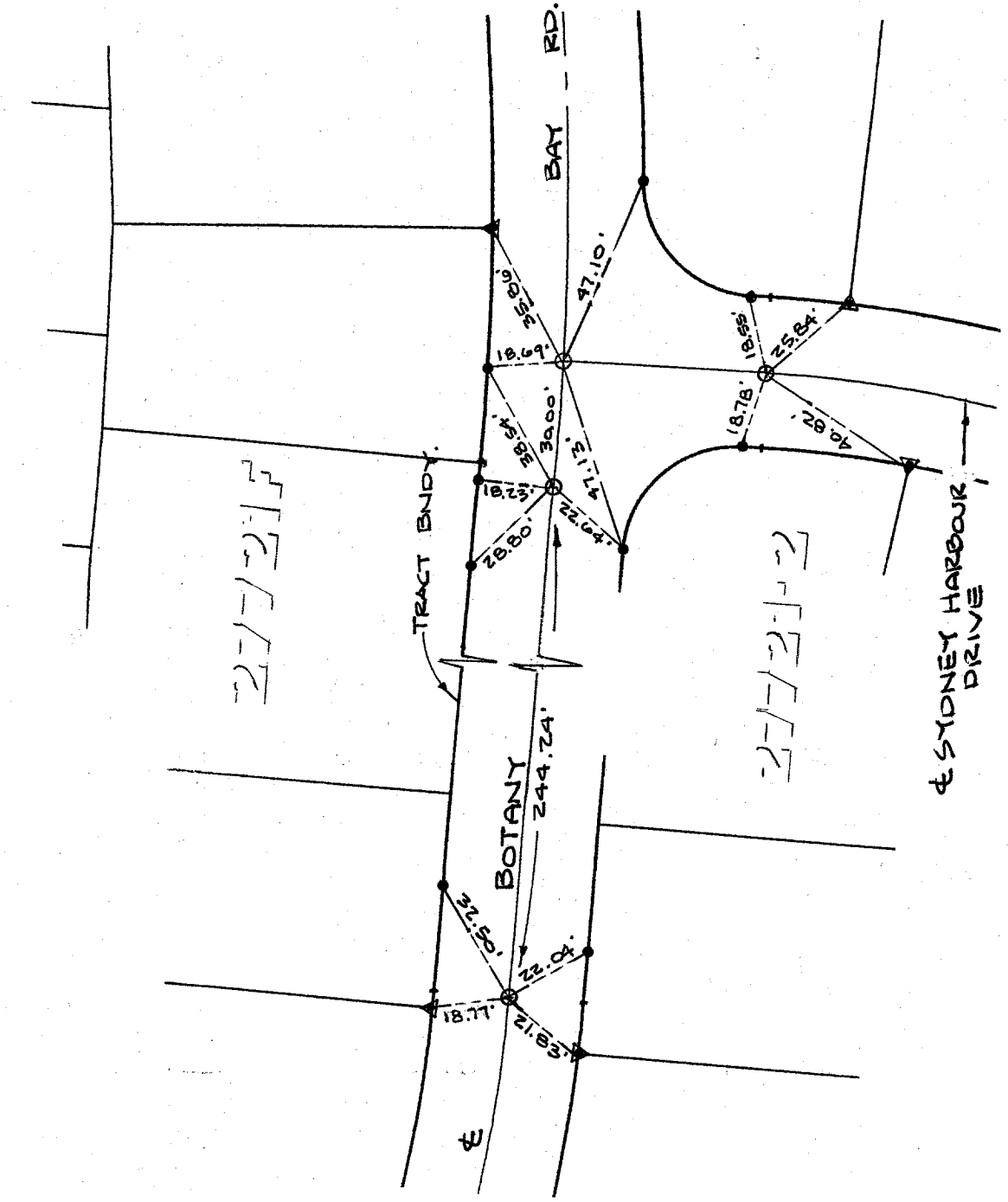


STREET BOTANY BAY RD. X-STREET SYDNEY HARBOUR DR.

OFFICE USE ONLY

Legend

- ⊙ -Set 1" I.P. w/L.S.3018 Plastic Plug Flush
- -Set Ramset Nail On T.C.
- ▲ -FD. Nail w/L.S.3018 On T.C.
- -SET SPIKE WITH TAG STAMPED P.C.E 17550



TR.27721-2

SCALE: 40'
 DATE: 9/5/97
 DR. BY: R.G.
 W.O.: 1032-001
 F.B.: 12818

OFFICIAL TIE PLAT
CITY OF RIVERSIDE

PREPARED BY: **CEG** Canty Engineering Group, Inc.
CIVIL ENGINEERING PLANNING SURVEYING

3120 Chicago Avenue, Suite 180, Riverside, CA 92507
 P.O. Box 52050, Riverside, CA 92517

(909)683-5234 Fax (909)683-5301

SHEET
2
 OF 6 SHEETS
 FILE NO.:

10723.FIF