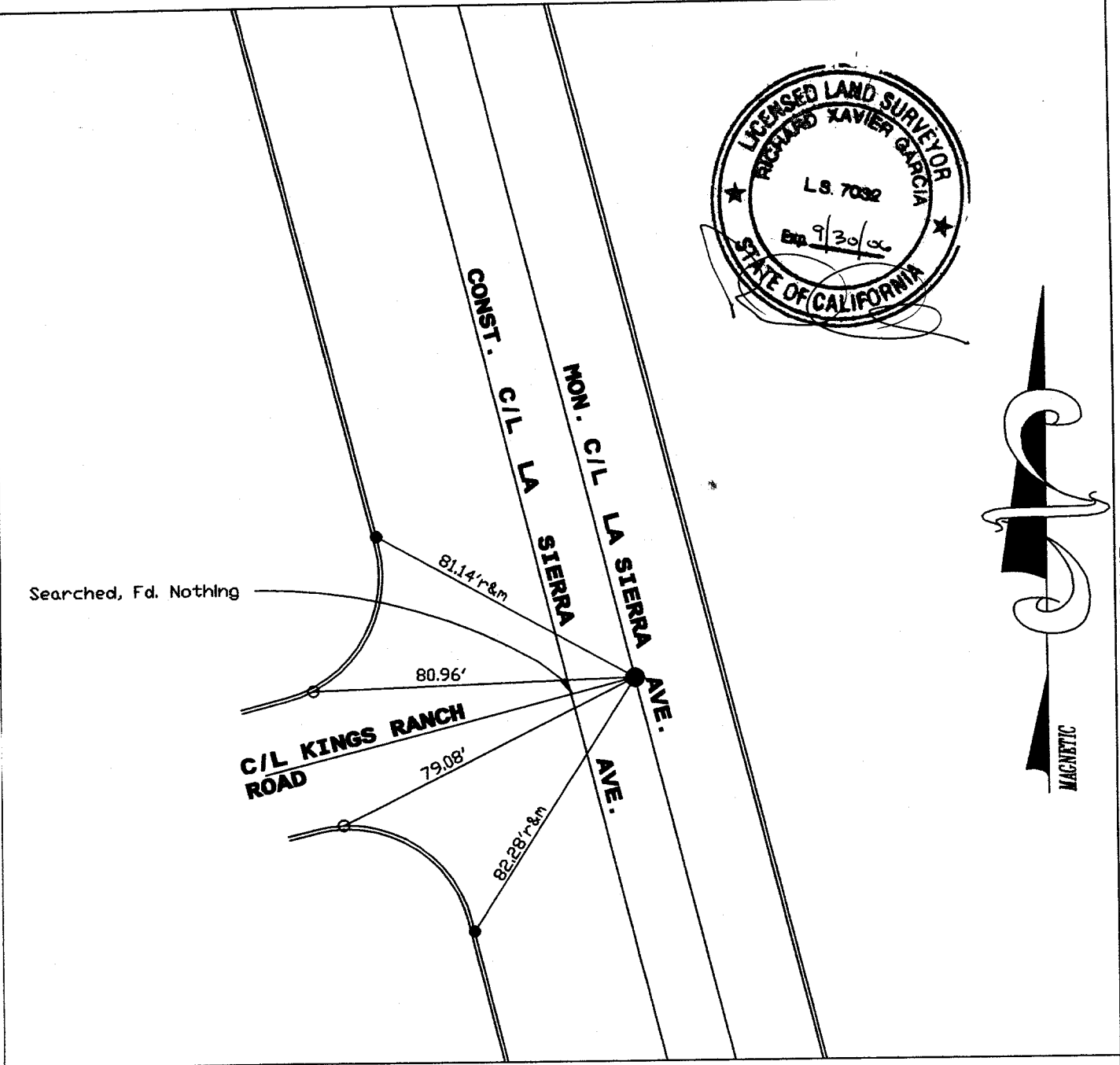


10743 .TIF

STREET CA SIERRA AVE X-STREET KINGS RANCH ROAD

OFFICIAL USE ONLY



Legend

- - Found LD. & TK. on T/C per City Tie Sheet 4800.TIF
- - Set LD. & TK. on T/C
- - Found "C" Nail on T/C
- - Found 1" LP. w/ Plastic Ping "Illegible", Dn. 0.2'

Scale: 1" = 40'

Date: 09/20/02

Drawn by: R.G.

F. B.: 1032-2/9

W.O.: 1032-2

**OFFICIAL TIE PLAT**  
CITY OF RIVERSIDE

**GPSURVEYING**  
P.O. BOX 3776 DONTARIO, CA 91761

*These ties are for the purpose of perpetuating the found monumentation. No claim is made as to the relationship of the points or lines shown hereon to true boundary locations.*

SHEET  
**1**  
OF 1 SHEETS

File No.: