

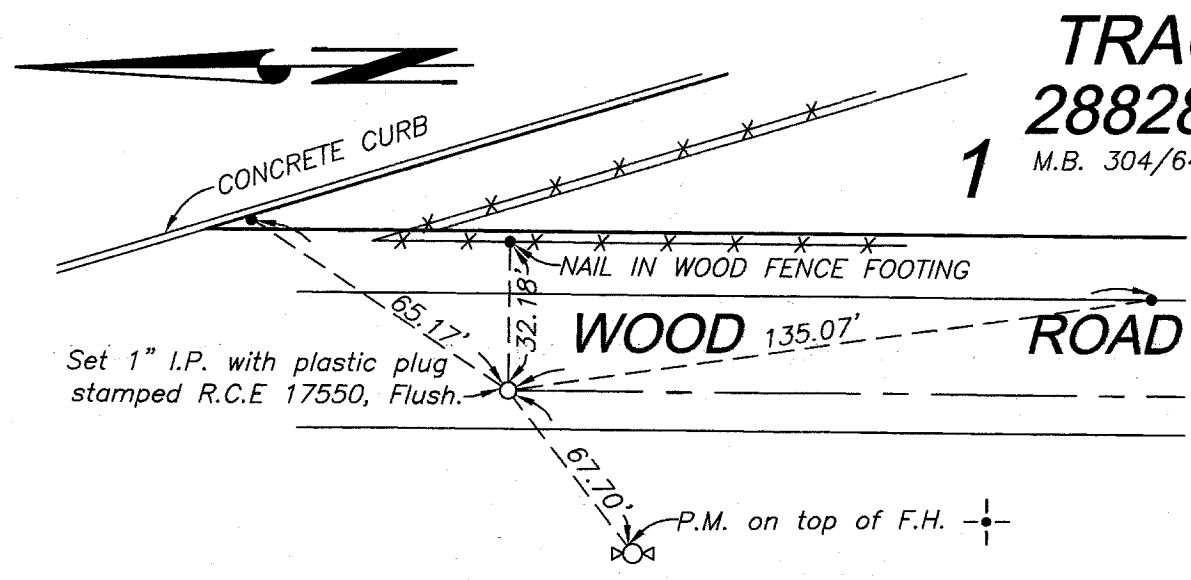
STREET WOOD RD./WINDY LN. X-STREET White Sage Ln./WOOD RD.

10777.TIF

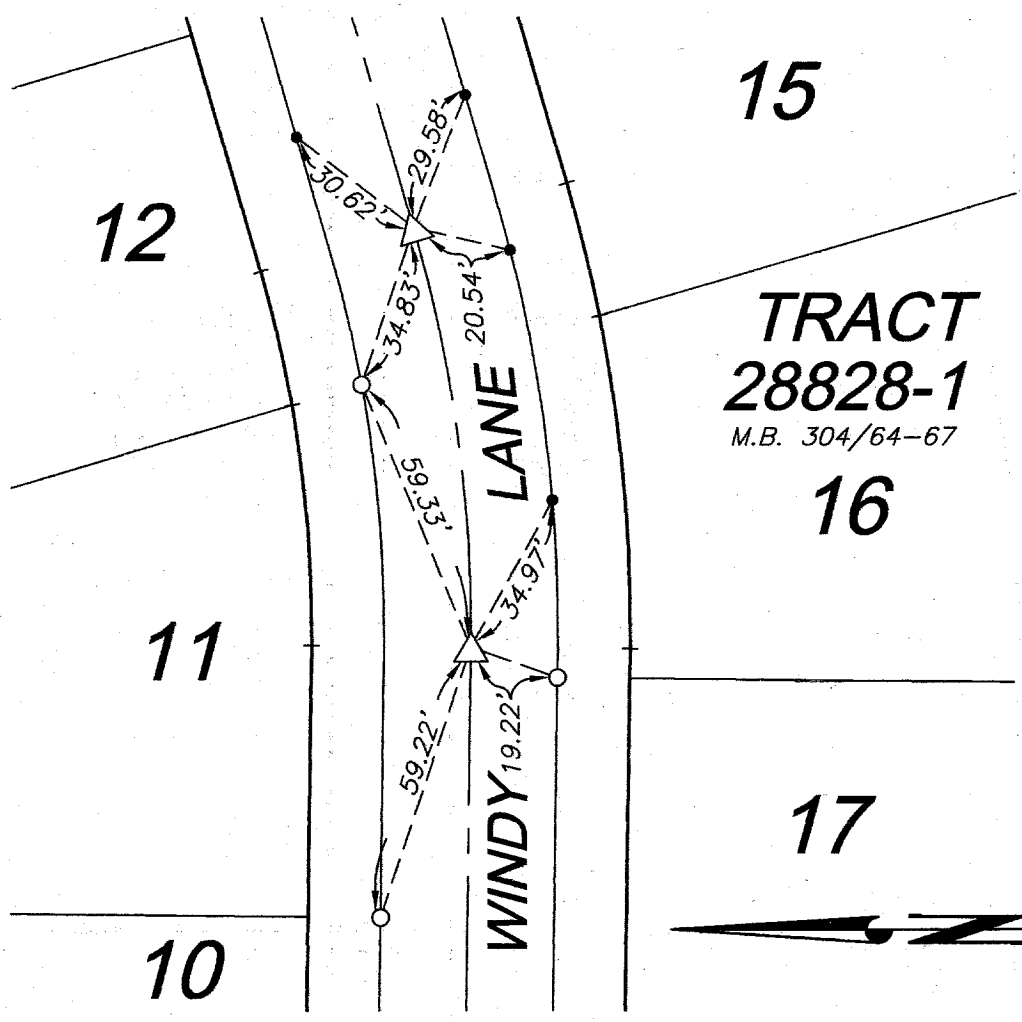
OFFICE USE ONLY

LEGEND

- -Set Nail on T.C.
- -Set Nail and R.C.E. 17550 Tag in top of curb at the prolongation of side lot lines.
- △ -Set 1/2" Spike w/R.C.E. 17550 tag, Flush.



TRACT
28828-1
M.B. 304/64-67



SCALE: 1" = 40'

DATE: 02-26-03

DR. BY: C.E.G.

W.O.: 1022-002

--- OFFICIAL TIE PLAT ---
CITY OF RIVERSIDE

PREPARED BY: **C.E.G.** Cauty Engineering Group, Inc.
CIVIL ENGINEERING PLANNING SURVEYING

2020 IOWA Avenue, Suite 102, Riverside, CA 92507
P.O. Box 52050, Riverside, CA 92517 (909) 683-5234 FAX (909) 683-5301

SHEET
3
OF 3 SHEETS