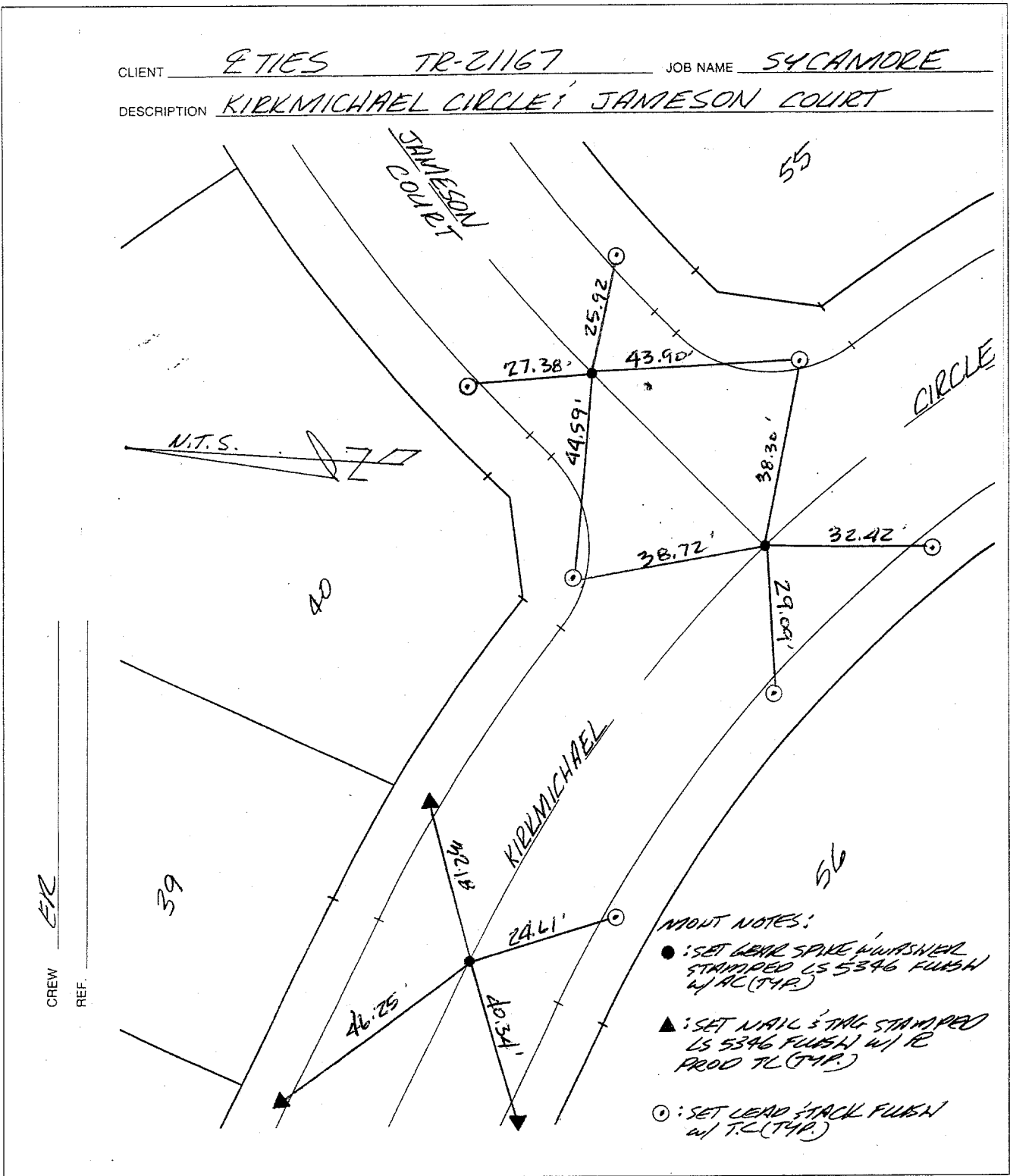


CLIENT ETIES TR-21167 JOB NAME SYCAMORE
 DESCRIPTION KIRKMICHAEL CIRCLE JAMESON COURT

Street: JAMESON CT.
 10789.TIF

OFFICIAL USE ONLY
 X-Street: KIRKMICHAEL CR.



MONUMENT NOTES:
 ● : SET LEAD SPIKE W/ WASHNER STAMPED LS 5346 FLUSH W/ RL (TYP.)
 ▲ : SET NAIL & TAG STAMPED LS 5346 FLUSH W/ RL PROD TL (TYP.)
 ○ : SET LEAD & TAG FLUSH W/ T.C. (TYP.)


- ✕ FD. Ramset Nail on T/C ● FD. LD. & TK. on T/C
- FD. "C" Nail on T/C ○ Set LD. & TK. on T/C

P.K. and City Engineer tag to be set @ surface after street construction is complete. (If possible)

Scale: .
 Date: .
 Drawn by: .
 F.B.: .
 TR-

OFFICIAL TIE PLAT
CITY OF RIVERSIDE

These ties are for the purpose of perpetuating the found monumentation. No claim is made as to the relationship of the points or lines shown hereon to true boundary locations.



Cadme MB: 49-3