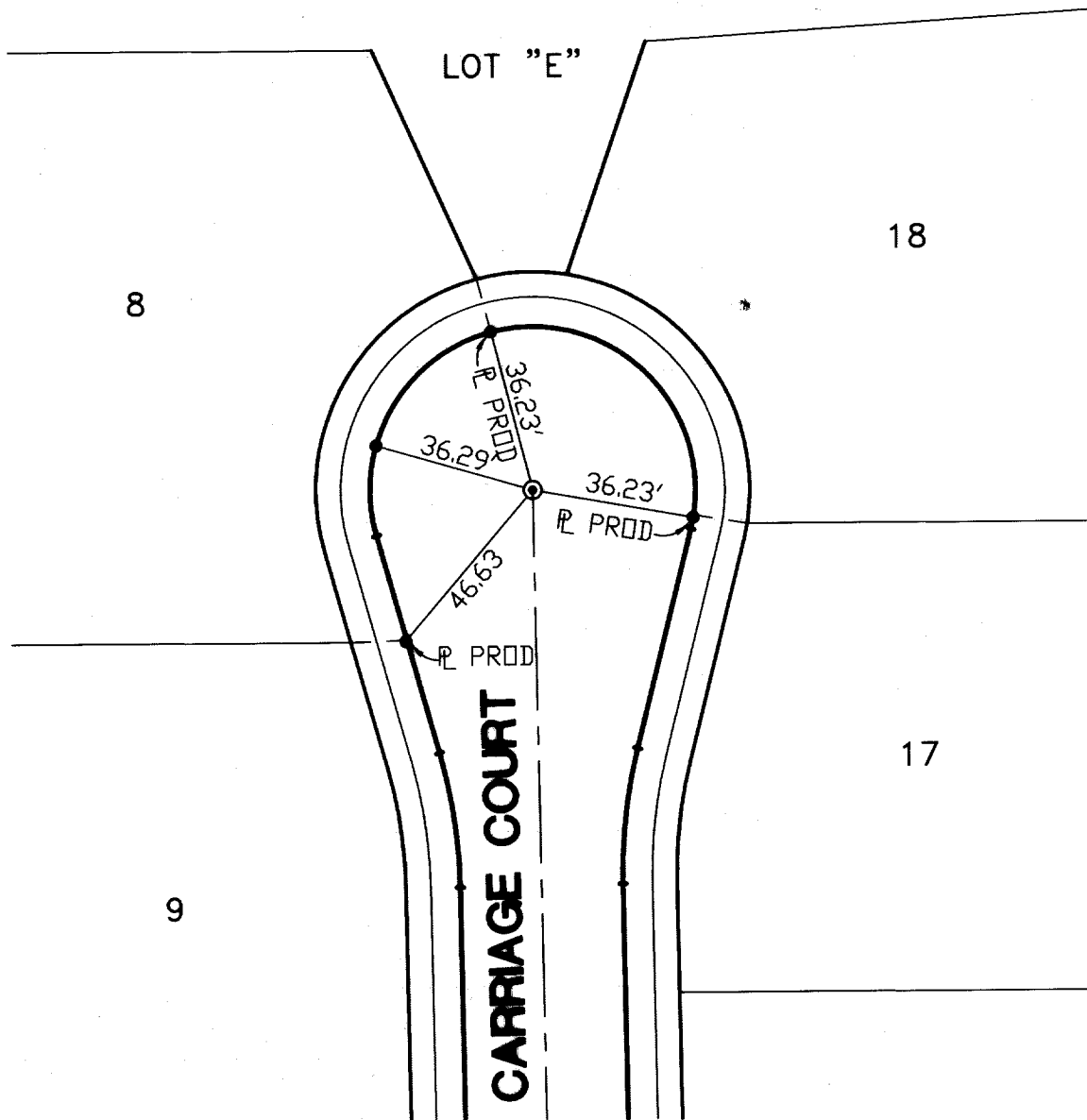



**LEGEND :**

- ⊙ SET SPIKE AND WASHER STAMPED "L.S. 4693"
- SET LEAD & BRASS TACK ON TOP OF CURB



SEE SHEET 7

*Gary W. Dokich*  
 GARY W. DOKICH  
 L.S. 4693 EXP. 9-30-03

SCALE: 1"=40'	<b>OFFICIAL TIE PLAT</b> CITY OF RIVERSIDE	
DATE: 7/07/03		
DRAWN BY: WS	<b>TRACT 28866-6</b>	<b>SHEET 6 OF 7</b>
ENG: MDS		