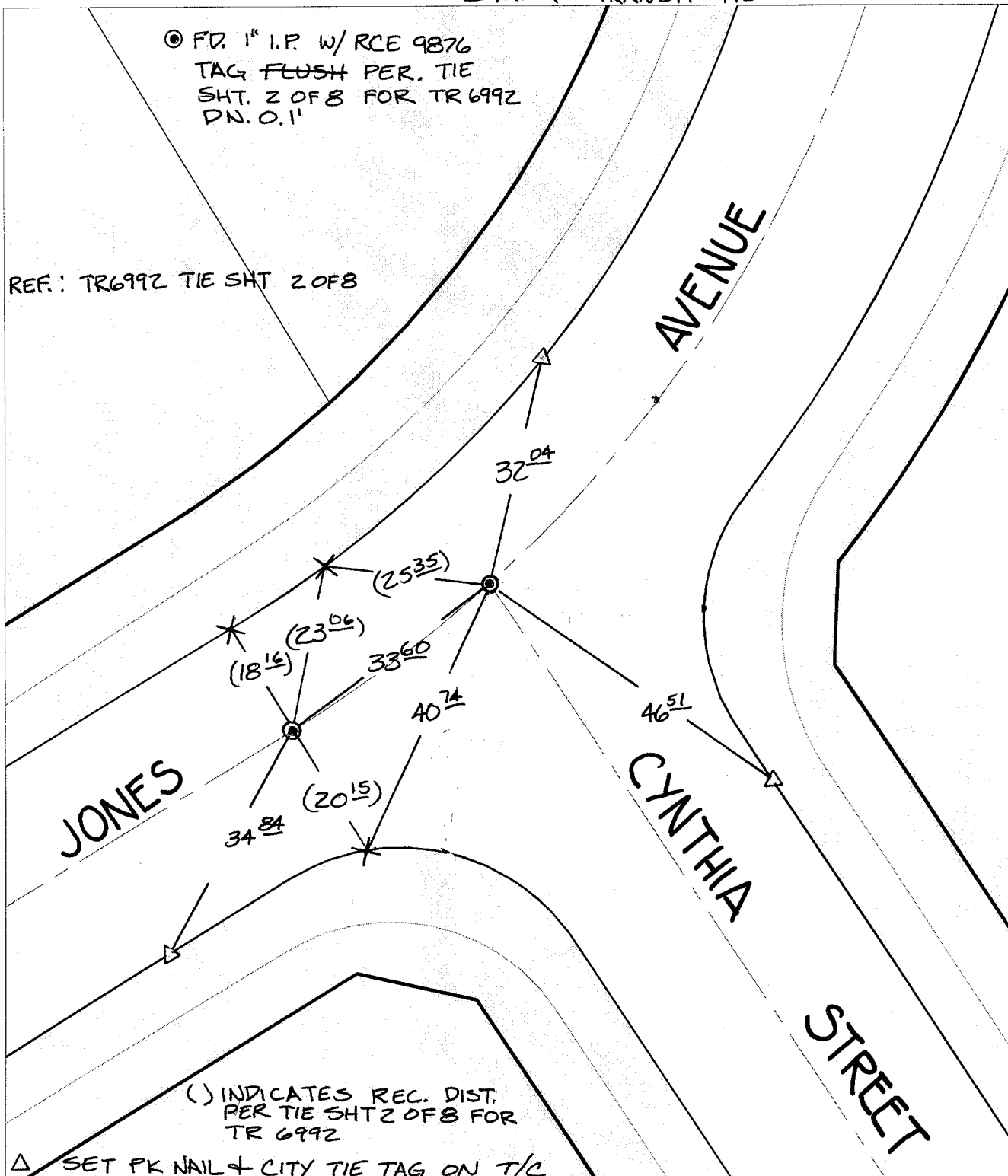


SWING & TRANSIT TIE

© FD. 1" I.P. W/ RCE 9876  
TAG FLUSH PER. TIE  
SHT. 2 OF 8 FOR TR 6992  
DN. 0.1"

REF: TR6992 TIE SHT 2 OF 8



( ) INDICATES REC. DIST.  
PER TIE SHT 2 OF 8 FOR  
TR 6992

△ SET PK NAIL & CITY TIE TAG ON T/C

- × FD. Ramset Nail on T/C
- FD. LD. & TK. on T/C
- FD. "C" Nail on T/C
- Set LD. & TK. on T/C
- P.K. and City Engineer tag to be set @ surface after street construction is complete. (If possible)

Street: 10858 TIE  
 JONES AVENUE  
 X-Street: OFFICIAL USE ONLY  
 CYNTHIA STREET

Scale: 1" = 20'  
 Date: 09/30/02  
 Drawn by: SURVEY  
 F.B.:  
 TR-Sec: T3SR6W-11

**OFFICIAL TIE PLAT**  
 CITY OF RIVERSIDE

*These ties are for the purpose of perpetuating the found monumentation. No claim is made as to the relationship of the points or lines shown hereon to true boundary locations.*

Sheet 1 of 1  
 Cadme MB: 64-7