

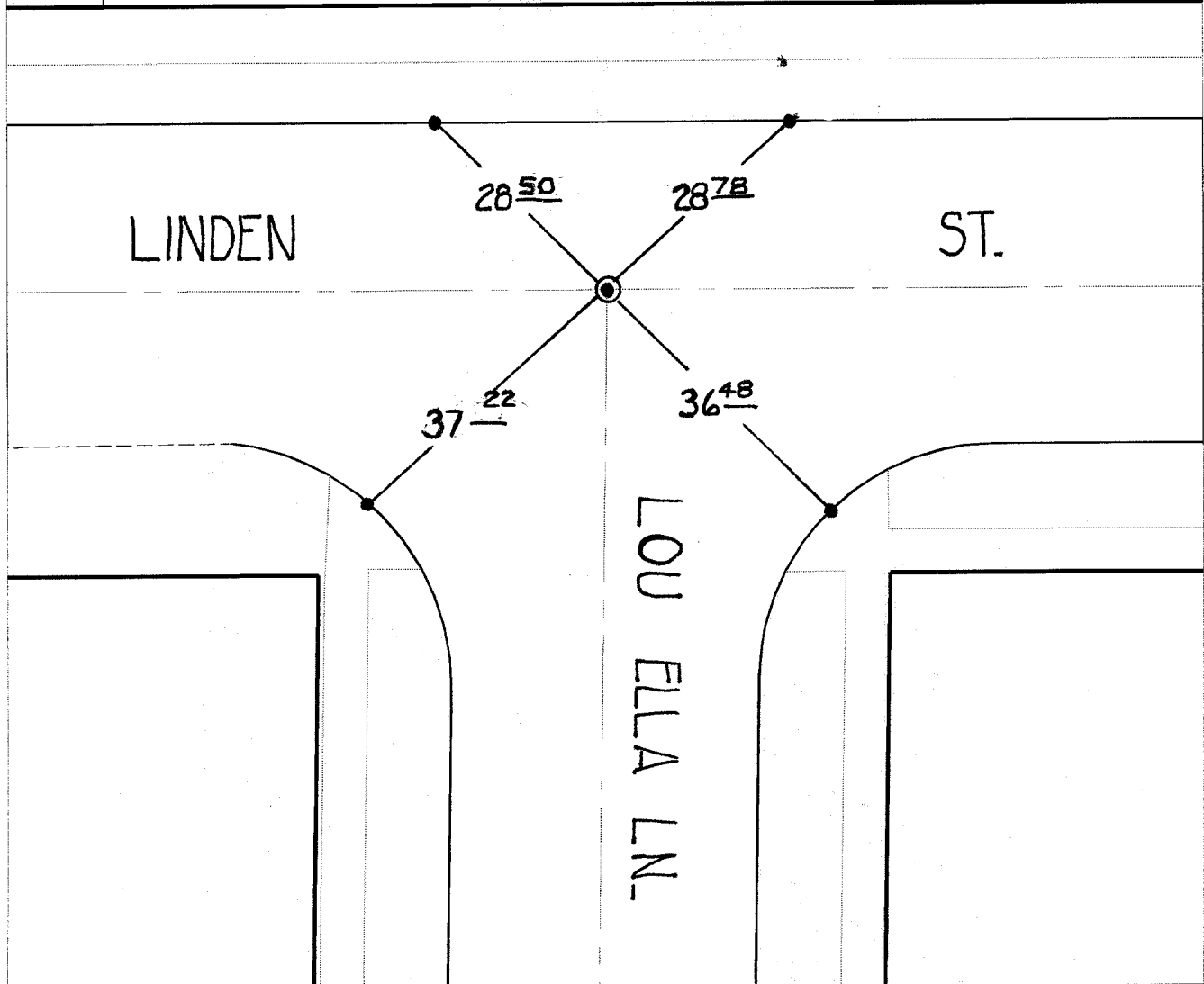
**NOTE**

⊙ FD. 3/4" I.P NO TAG DNDJ  
 SET P.K. + CITY TAG PER.  
 ARFB 1038/5

**HISTORICAL DATA**

FB 1038/4  
 MB 31/62  
 FB 705/34  
 R/S 22/61  
 R/S 32/25

**TRANSIT TIES**



⊗ FD. Ramset Nail on T/C  
 ■ FD. "C" Nail on T/C

● FD. LD. & TK. on T/C  
 ○ Set LD. & TK. on T/C

Street:  
**10861.TIF**

LINDEN ST.

X-Street:  
 OFFICIAL USE ONLY

LOU ELLA LN.

Scale: 1" = 20'  
 Date: 11/15/99  
 Drawn by: survey  
 W.O.:  
 F.B.:

**OFFICIAL TIE PLAT**  
 CITY OF RIVERSIDE

*These ties are for the purpose of perpetuating the found monumentation. No claim is made as to the relationship of the points or lines shown hereon to true boundary locations.*



Sheet 1 of 1  
 File No.: