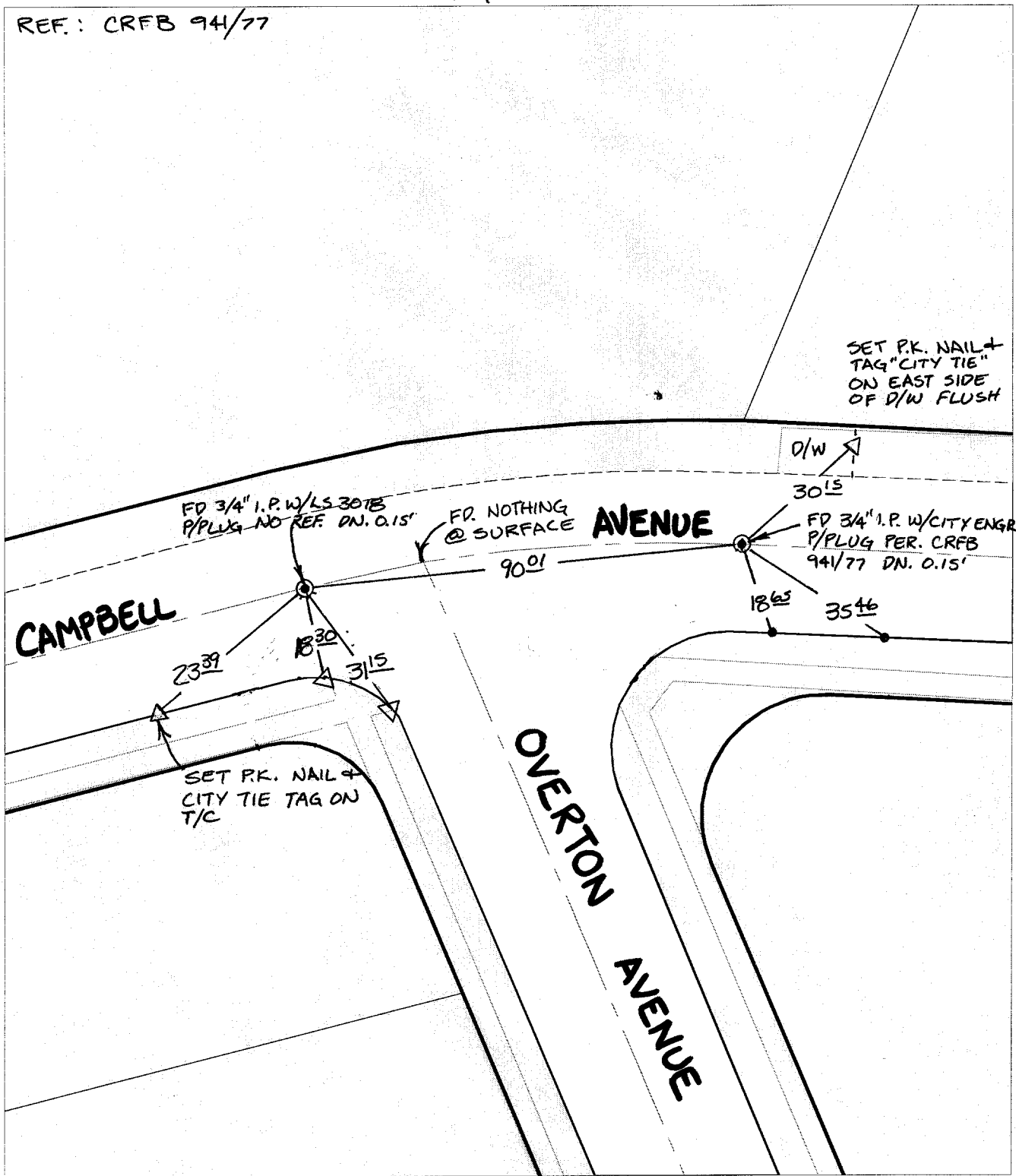


SWING TIES

REF.: CRFB 94/77



SET P.K. NAIL + TAG "CITY TIE" ON EAST SIDE OF D/W FLUSH

FD 3/4" I.P.W/LS 30TB P/PLUG NO REF DN. 0.15'

FR NOTHING @ SURFACE

D/W 30' 15"

FD 3/4" I.P.W/CITY ENGR P/PLUG PER. CRFB 94/77 DN. 0.15'

CAMPBELL

AVENUE

OVERTON AVENUE

SET P.K. NAIL + CITY TIE TAG ON T/C

- ✕ FD. Ramset Nail on T/C
  - FD. LD. & TK. on T/C
  - FD. "C" Nail on T/C
  - Set LD. & TK. on T/C
- P.K. and City Engineer tag to be set @ surface after street construction is complete. (If possible)

10873.TIE  
 Street: OVERTON AVENUE  
 X-Street: CAMPBELL AVENUE  
 OFFICIAL USE ONLY

Scale: 1" = 30'  
 Date: 09/30/02  
 Drawn by: SURVEY  
 F.B.:  
 TR-Sec: T3SR6W-2

**OFFICIAL TIE PLAT**  
 CITY OF RIVERSIDE

*These ties are for the purpose of perpetuating the found monumentation. No claim is made as to the relationship of the points or lines shown hereon to true boundary locations.*



Sheet 1 of 1  
 Cadme MB: 49-8