

Street:

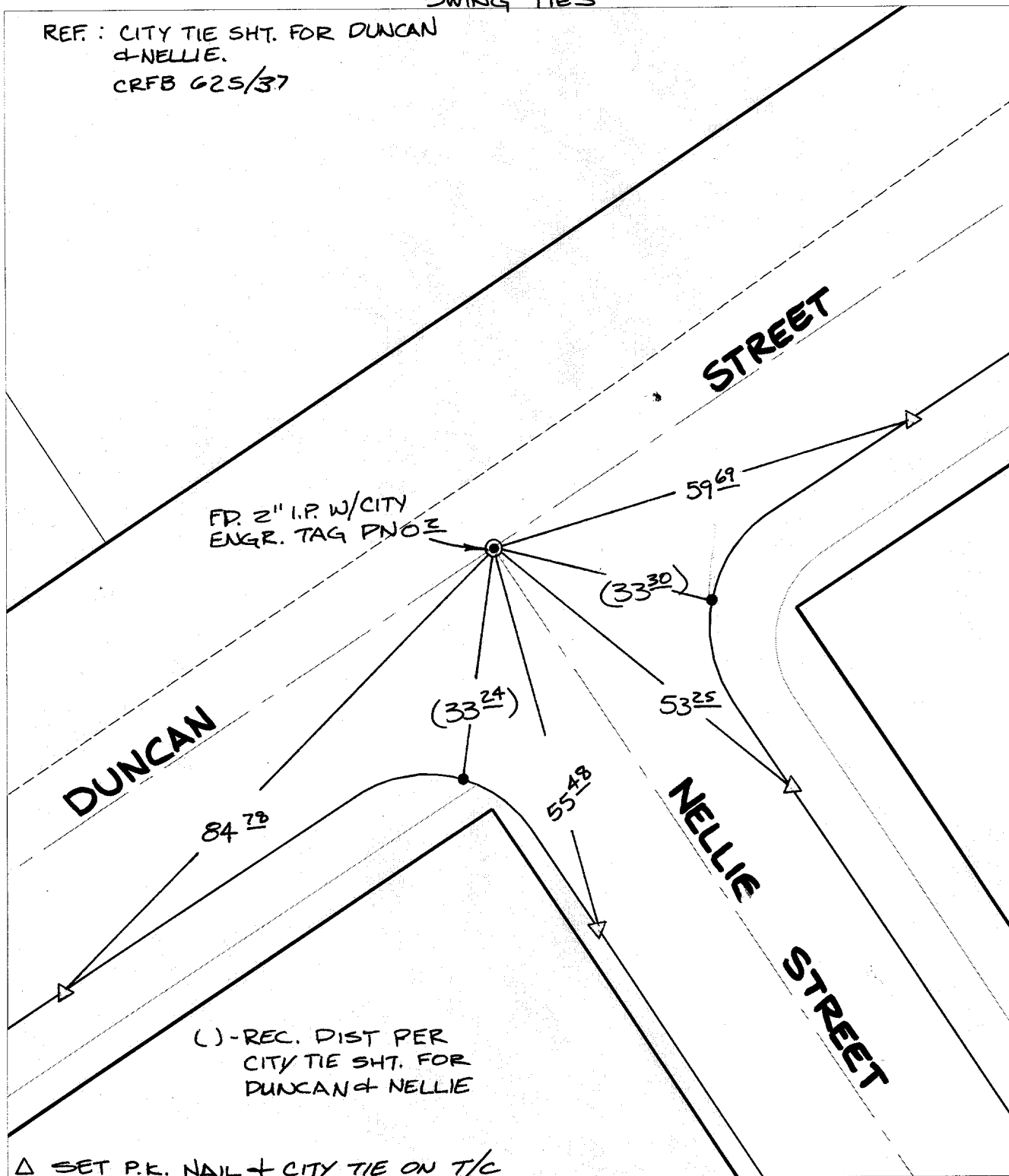
DUNCAN AVENUE

X-Street:
OFFICIAL USE ONLY

NELLIE STREET

SWING TIES

REF.: CITY TIE SHT. FOR DUNCAN & NELLIE.
CRFB 625/37



() - REC. DIST PER CITY TIE SHT. FOR DUNCAN & NELLIE

△ SET P.K. NAIL + CITY TIE ON T/C

- × FD. Ramset Nail on T/C ● FD. LD. & TK. on T/C
- FD. "C" Nail on T/C ○ Set LD. & TK. on T/C

P.K. and City Engineer tag to be set @ surface after street construction is complete. (If possible)

Scale: 1" = 20'

Date: 09/27/02

Drawn by: SURVEY

F.B.:

TR-Sec: T3SR5W-6

OFFICIAL TIE PLAT

CITY OF RIVERSIDE

These ties are for the purpose of perpetuating the found monumentation. No claim is made as to the relationship of the points or lines shown hereon to true boundary locations.



Sheet 1 of 1
Cadme MB: 65-2