

10894.TIF

Street:

HOLLENBECK DRIVE

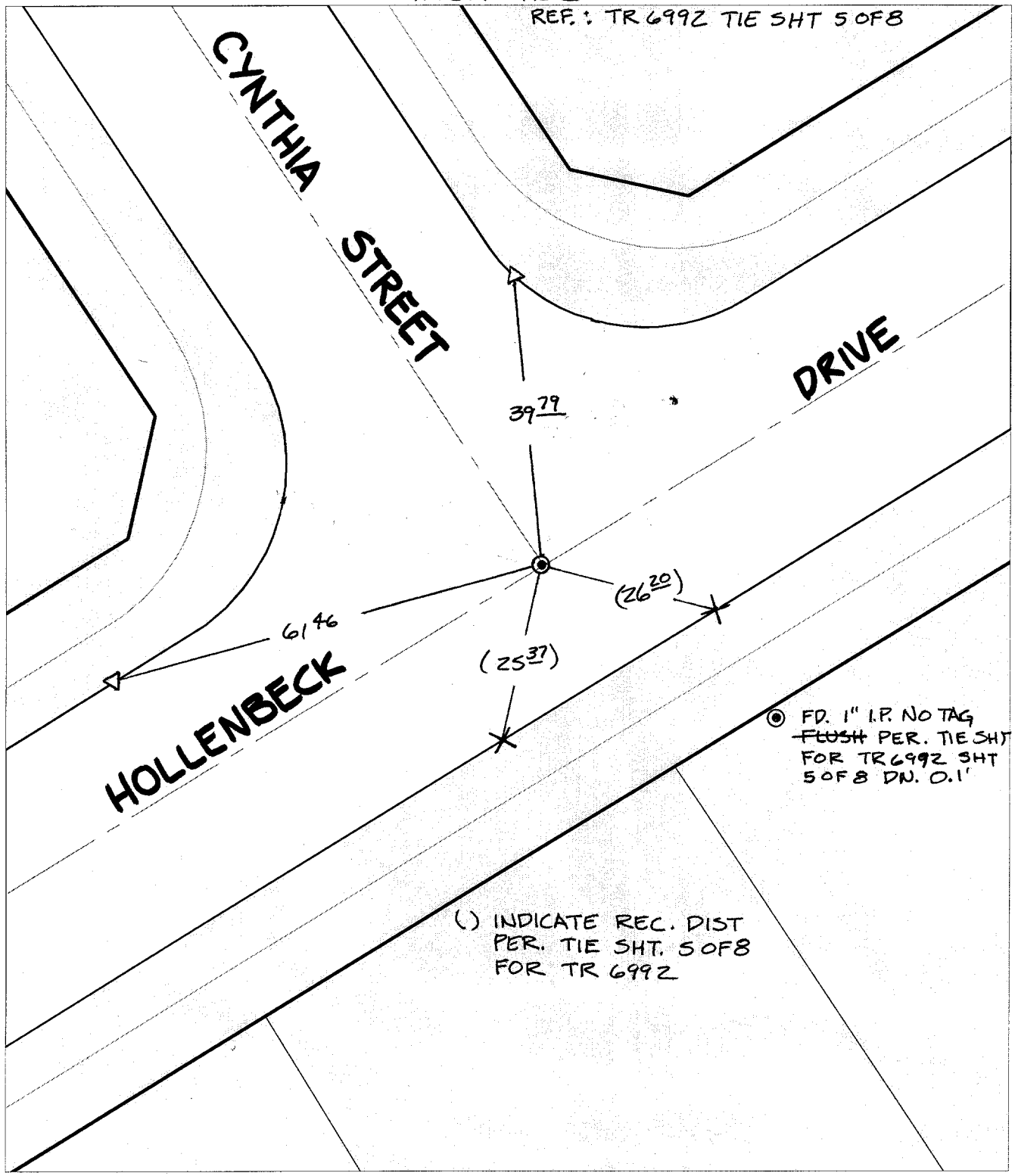
X-Street:

CYNTHIA STREET

OFFICIAL USE ONLY

TRANSIT TIES

REF.: TR 6992 TIE SHT 5 OF 8



⊙ FD. 1" I.P. NO TAG
FLUSH PER. TIE SHT
FOR TR 6992 SHT
5 OF 8 DN. O.1"

() INDICATE REC. DIST
PER. TIE SHT. 5 OF 8
FOR TR 6992

- ✕ FD. Ramset Nail on T/C ● FD. LD. & TK. on T/C
- FD. "C" Nail on T/C ○ Set LD. & TK. on T/C

P.K. and City Engineer tag to be set @
surface after street construction is
complete. (If possible)

Scale: 1" = 20'
 Date: 09/30/02
 Drawn by: SURVEY
 F.B.:
 TR-Sec: T3SR6W-14

OFFICIAL TIE PLAT

CITY OF RIVERSIDE

*These ties are for the purpose of perpetuating the found
 monumentation. No claim is made as to the relationship of
 the points or lines shown hereon to true boundary locations.*



Sheet 1 of 1
 Cadme MB: 64-8