

SWING TIES

REF.: TIE SHT. FOR TR5529

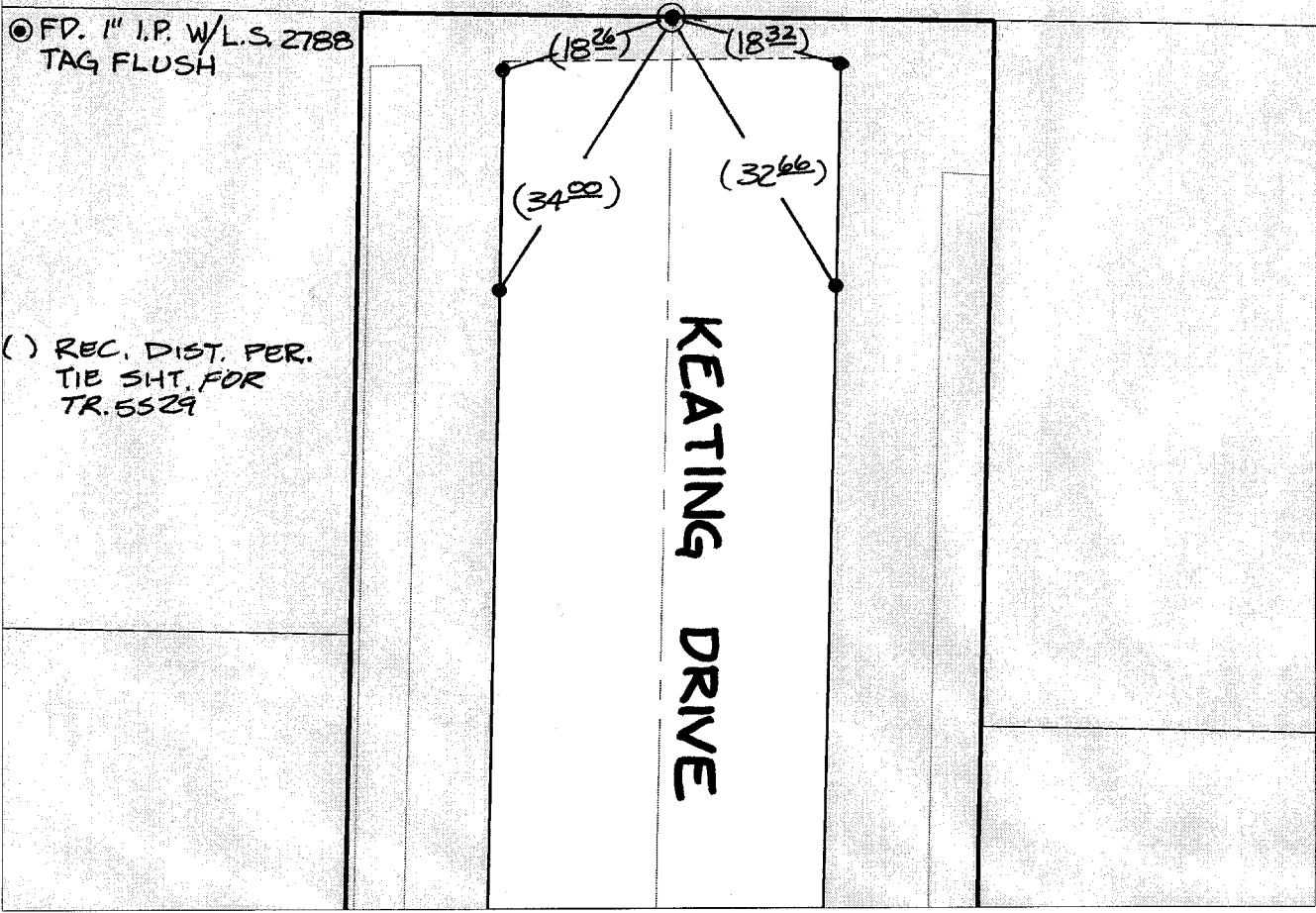
10895 TIF

Street:

KEATING DRIVE

X-Street:  
OFFICIAL USE ONLY

TRACT BNDY.



⊙ FD. 1" I.P. W/L.S. 2788  
TAG FLUSH

( ) REC. DIST. PER.  
TIE SHT. FOR  
TR. 5529

- ✕ FD. Ramset Nail on T/C    ● FD. LD. & TK. on T/C
- FD. "C" Nail on T/C      ○ Set LD. & TK. on T/C

*P.K. and City Engineer tag to be set @  
surface after street construction is  
complete. (If possible)*

Scale: 1" = 20'  
Date: 08/20/02  
Drawn by: SURVEY  
F.B.:  
TR-Sec: T2SR6W-36

**OFFICIAL TIE PLAT**  
**CITY OF RIVERSIDE**

*These ties are for the purpose of perpetuating the found  
monumentation. No claim is made as to the relationship of  
the points or lines shown hereon to true boundary locations.*



Sheet 1 of 1  
Cadme MB: 34-8