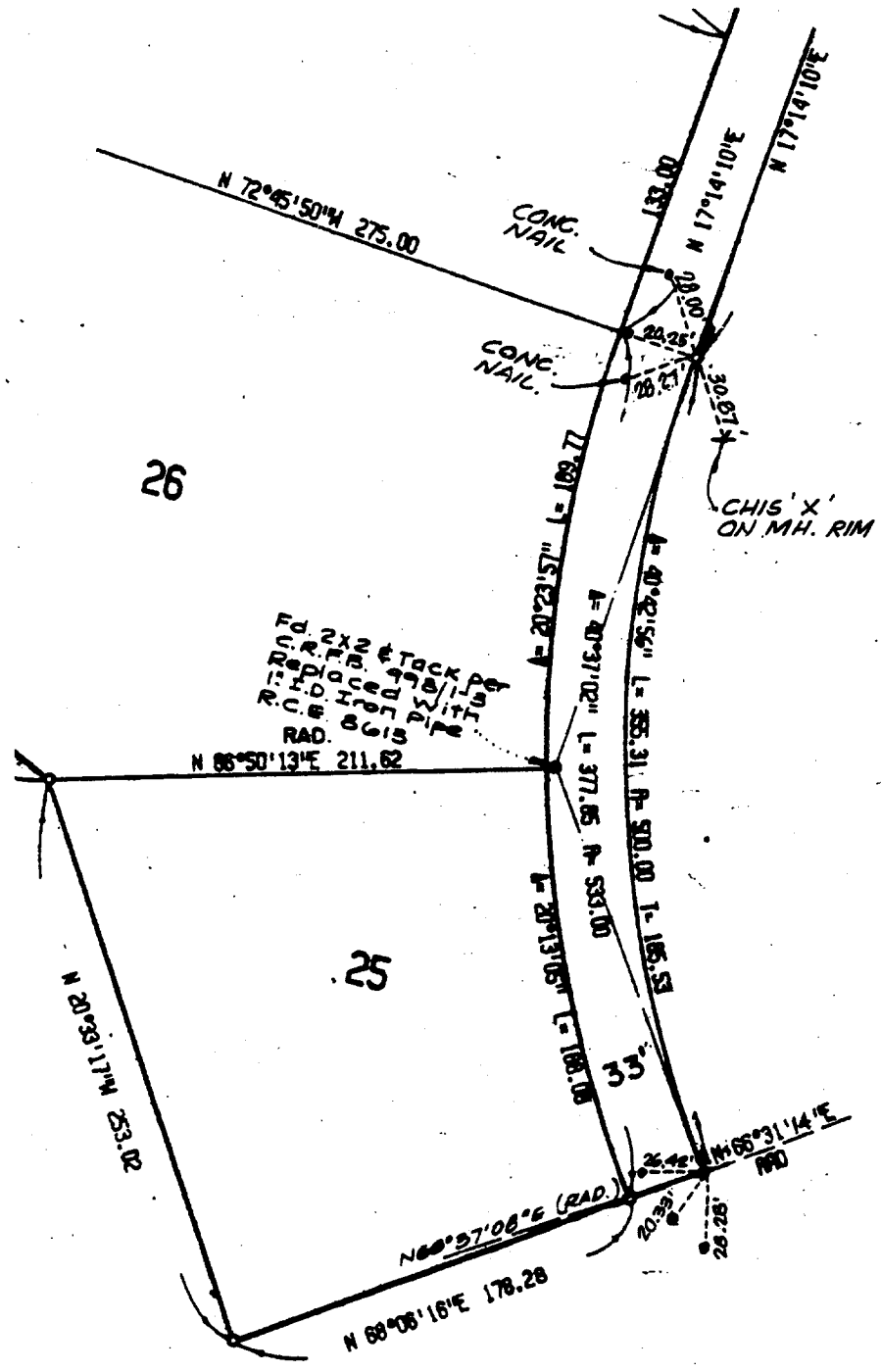
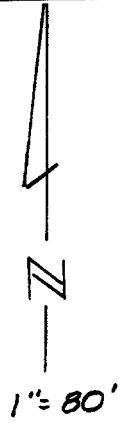


1092 T.I.F

Street: CALMHILL DR.

X-Street: OFFICIAL USE ONLY



----- INDICATES LEAD & PIN ON CURB

- ✕ FD. Ramset Nail on T/C
- FD. LD. & TK. on T/C
- FD. "C" Nail on T/C
- Set LD. & TK. on T/C

Scale:
 Date:
 Drawn by:
 W.O.:
 F.B.:

OFFICIAL TIE PLAT

CITY OF RIVERSIDE

These ties are for the purpose of perpetuating the found monumentation. No claim is made as to the relationship of the points or lines shown hereon to true boundary locations.

TRACT 7925

Sheet 1 of 1

File No.: