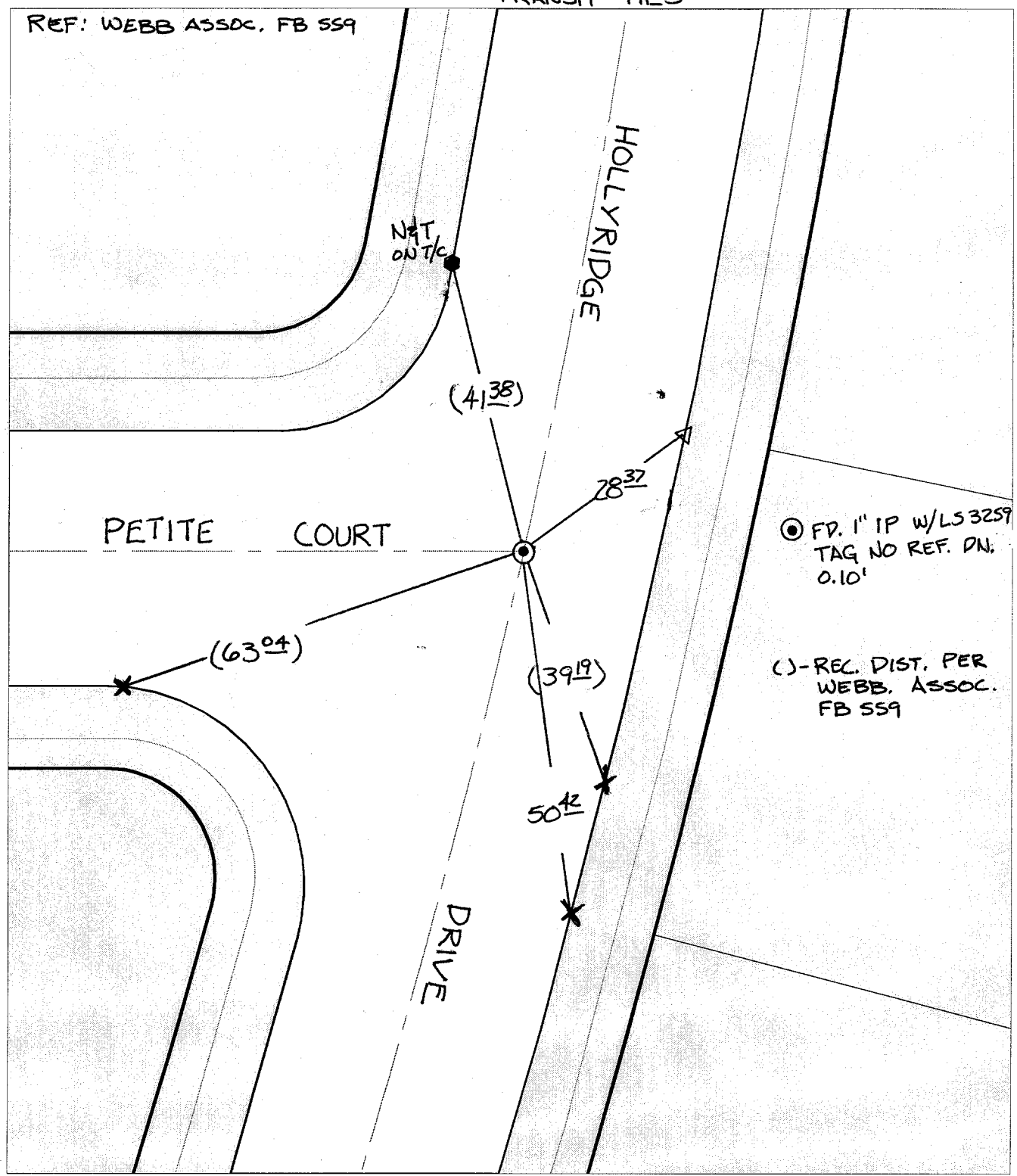


11048.TIF

Street: HOLLYRIDGE DRIVE X-Street: PETITE COURT
OFFICIAL USE ONLY

TRANSIT TIES

REF: WEBB ASSOC. FB 559



✕ FD. Ramset Nail on T/C ● FD. LD. & TK. on T/C P.K. and City Engineer tag to be set @ surface after street construction is complete. (if possible)
 ■ FD. "C" Nail on T/C ○ Set LD. & TK. on T/C

Scale: 1" = 20'
 Date: 06/28/02
 Drawn by: SURVEY
 F.B.:
 TR-Sec: T2SR5W-32

OFFICIAL TIE PLAT
CITY OF RIVERSIDE

These ties are for the purpose of perpetuating the found monumentation. No claim is made as to the relationship of the points or lines shown hereon to true boundary locations.

Sheet 1 of 1
 Cadme MB: 51-2