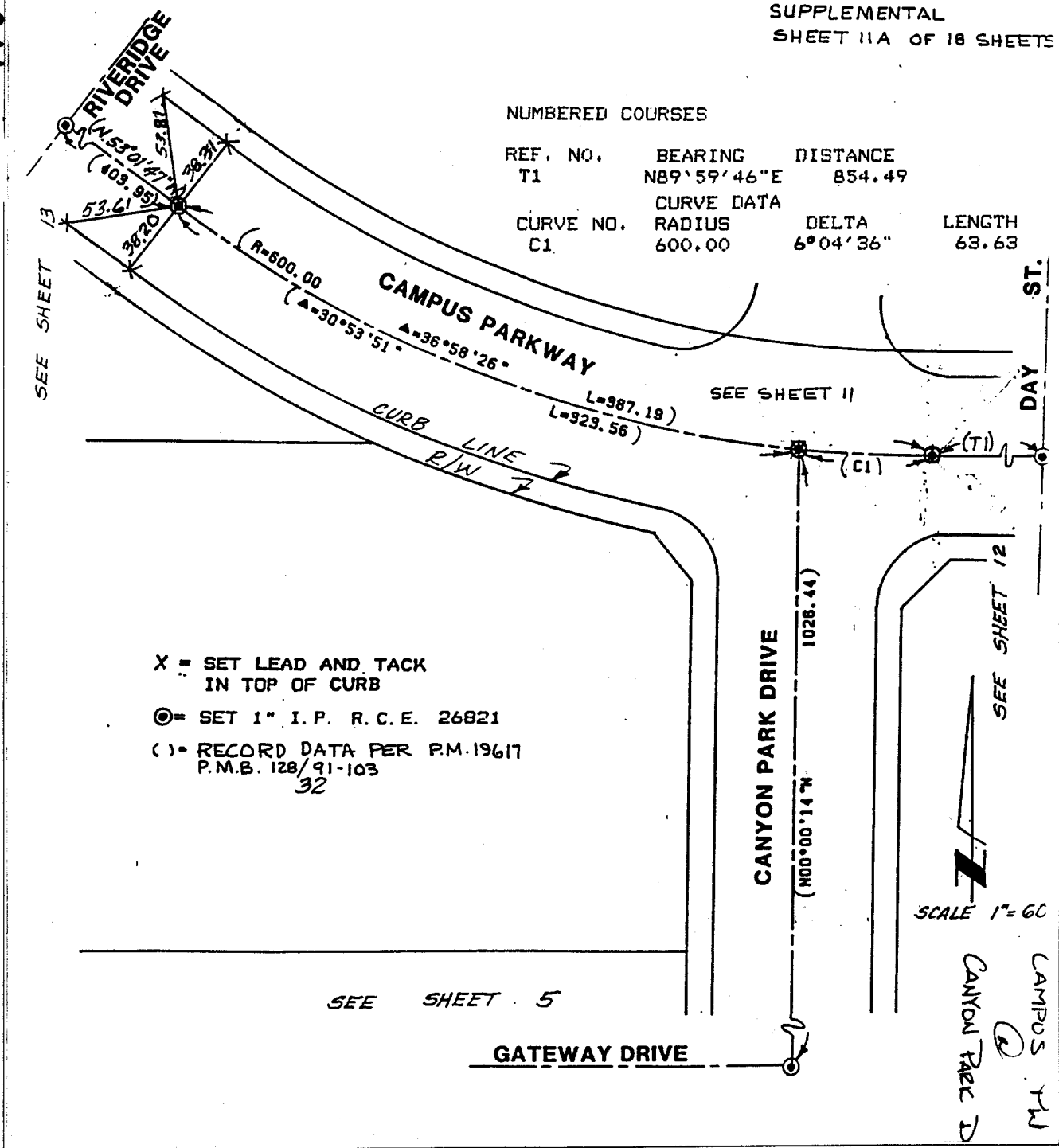


1107-TIA

SUPPLEMENTAL
SHEET 11A OF 18 SHEETS

NUMBERED COURSES

REF. NO.	BEARING	DISTANCE	
T1	N89°59'46"E	854.49	
CURVE DATA			
CURVE NO.	RADIUS	DELTA	LENGTH
C1	600.00	6°04'36"	63.63



X = SET LEAD AND TACK
IN TOP OF CURB

O = SET 1" I.P. R.C.E. 26821

(C) = RECORD DATA PER P.M. 19617
P.M.B. 128/91-103
32

- ✕ FD. Ramset Nail on T/C
- FD. LD. & TK. on T/C
- FD. "C" Nail on T/C
- Set LD. & TK. on T/C

Street: CAMPUS PARKWAY X-Street: CANYON PARK DR

OFFICIAL USE ONLY

OFFICIAL TIE PLAT
CITY OF RIVERSIDE

These ties are for the purpose of perpetuating the found monumentation. No claim is made as to the relationship of the points or lines shown hereon to true boundary locations.

Scale:
Date:
Drawn by:
W.O.:
F.B.:

Sheet 1 of 1
File No.: