

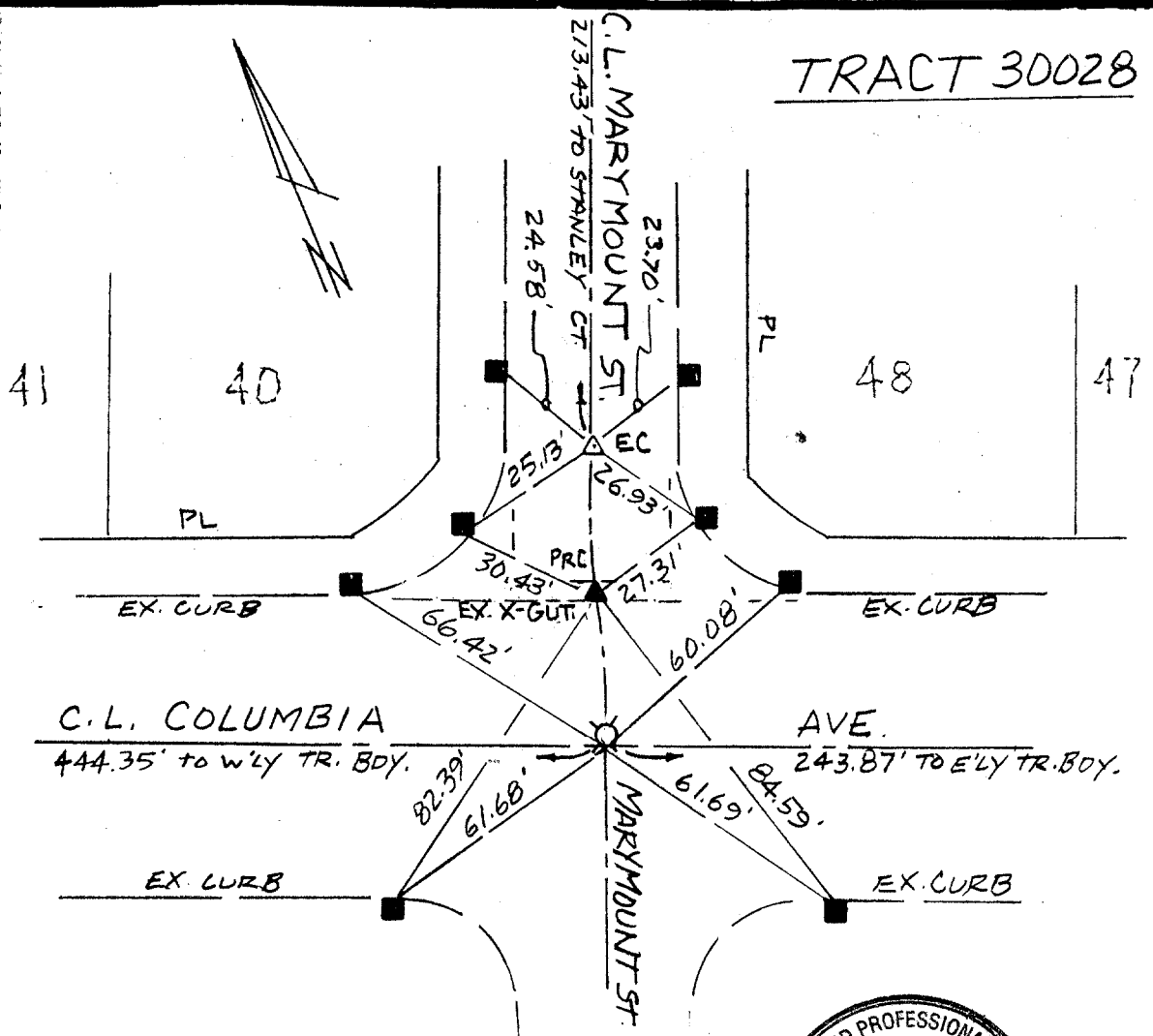
1151.T1F

Street: COLUMBIA AVE

X-Street: MARYMOUNT ST

OFFICIAL USE ONLY

TRACT 30028



LEGEND

- - NAIL ON TC
- △ - FD SPK. TAGGED "RCE 20300"
- ▲ - FD NAIL & TAG "RCE 20300"
- ⊗ - FD 1" IP & TAG "RCE 12437" (0.08' N'LY C.L. COLUMBIA AVE)

NOTE: TIE DIST'S ARE TO ACTUAL C.L. INT. AND NOT TO 1" I.P.



K. N. Linville
 KENNETH N. LINVILLE

8/25/03

Scale: 1" = 40'
 Date: 8/25/03
 Drawn by: KNL

OFFICIAL TIE PLAT
CITY OF RIVERSIDE

These ties are for the purpose of perpetuating the found monumentation. No claim is made as to the relationship of the points or lines shown hereon to true boundary locations.

Sheet 1 of 1
 File No.: