

1157. TIE

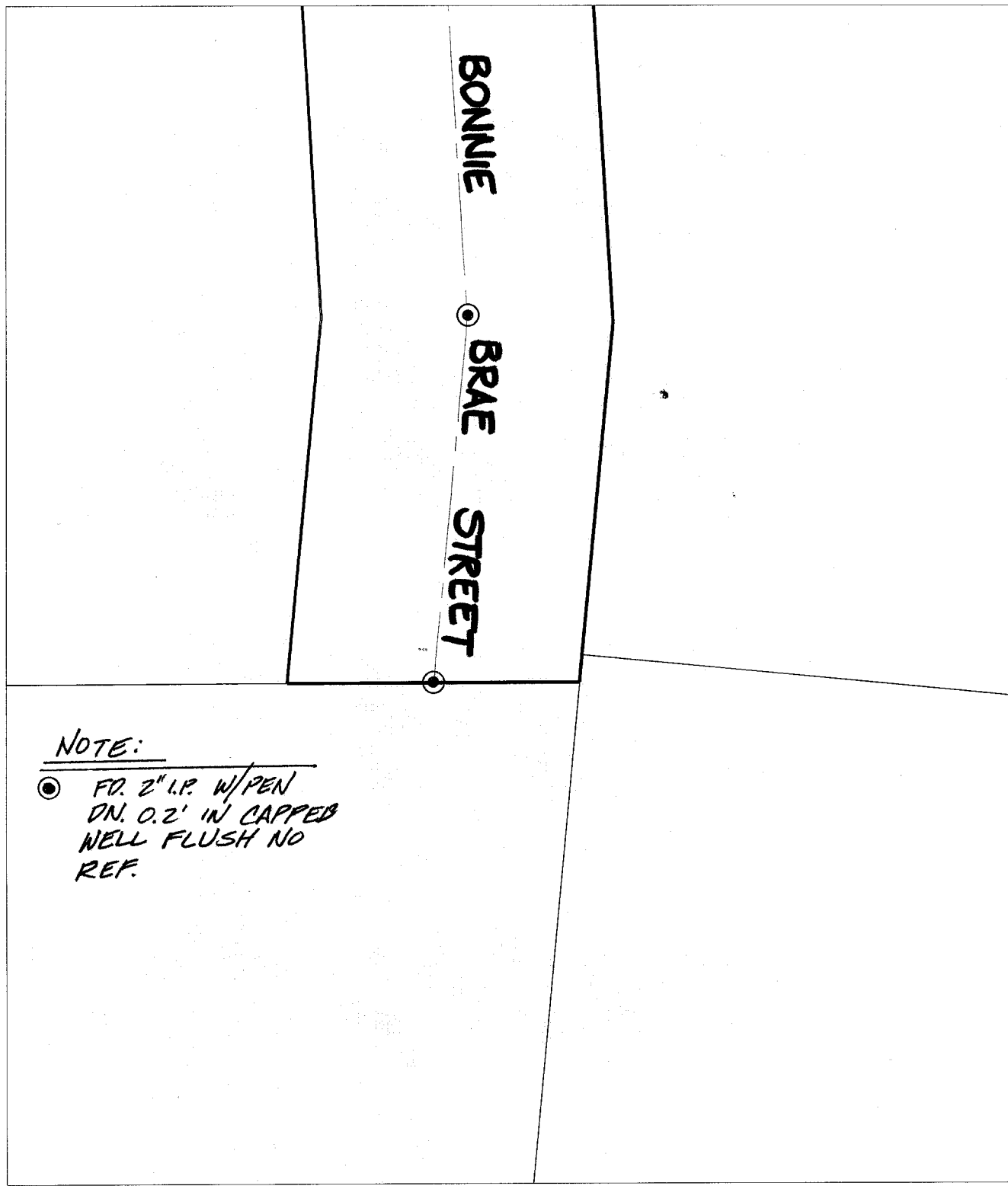
Street:

BONNIE BRAE STREET

X-Street:

ANGLE PT. ON CL.

OFFICIAL USE ONLY



NOTE:


⊙ FD. 2" I.P. W/PEN
 DN. 0.2' IN CAPPED
 WELL FLUSH NO
 REF.

- ✕ FD. Ramset Nail on T/C ● FD. LD. & TK. on T/C P.K. and City Engineer tag to be set @ surface after street construction is complete. (If possible)
- FD. "C" Nail on T/C ○ Set LD. & TK. on T/C

Scale: 1" = 20'
 Date: 01/30/03
 Drawn by: SURVEY
 F.B.:
 TR-Sec: T2SR5W-36

OFFICIAL TIE PLAT
CITY OF RIVERSIDE

These ties are for the purpose of perpetuating the found monumentation. No claim is made as to the relationship of the points or lines shown hereon to true boundary locations.



Sheet 1 of 1
 Cadme MB: 40-8