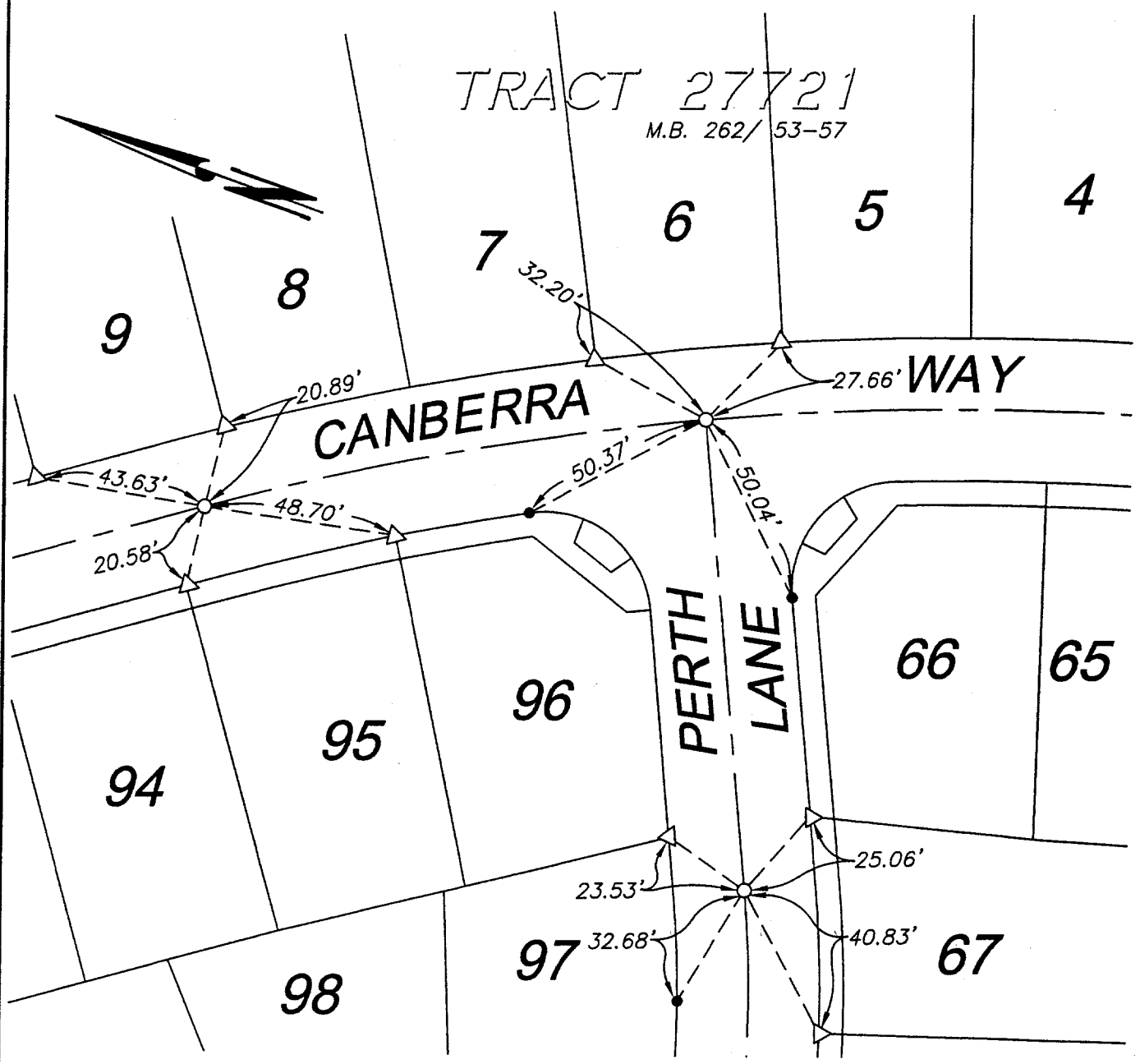


STREET CANBERRA WAY X-STREET PERTH LANE

OFFICE USE ONLY

LEGEND

- - Set Ramset Nail On T.C.
- △ - Set Nail and R.C.E. 17550 Tag in top of concrete curb at the prolongation of side lot lines.
- - Set 1/2" Spike w/washer stamped R.C.E. 17550, Flush.



116.TIF

SCALE: N.T.S	--- OFFICIAL TIE PLAT ---	SHEET
DATE: 7-10-00	CITY OF RIVERSIDE	8
DR. BY: C.E.G.	PREPARED BY: C.E.G. Cauty Engineering Group, Inc. CIVIL ENGINEERING PLANNING SURVEYING	OF 9 SHEETS
W.O.: 1003-001	2020 IOWA Avenue, Suite 102, Riverside, CA 92507 P.O. Box 52050, Riverside, CA 92517	
	(909) 683-5234 FAX (909) 683-5301	