

11180.TIF

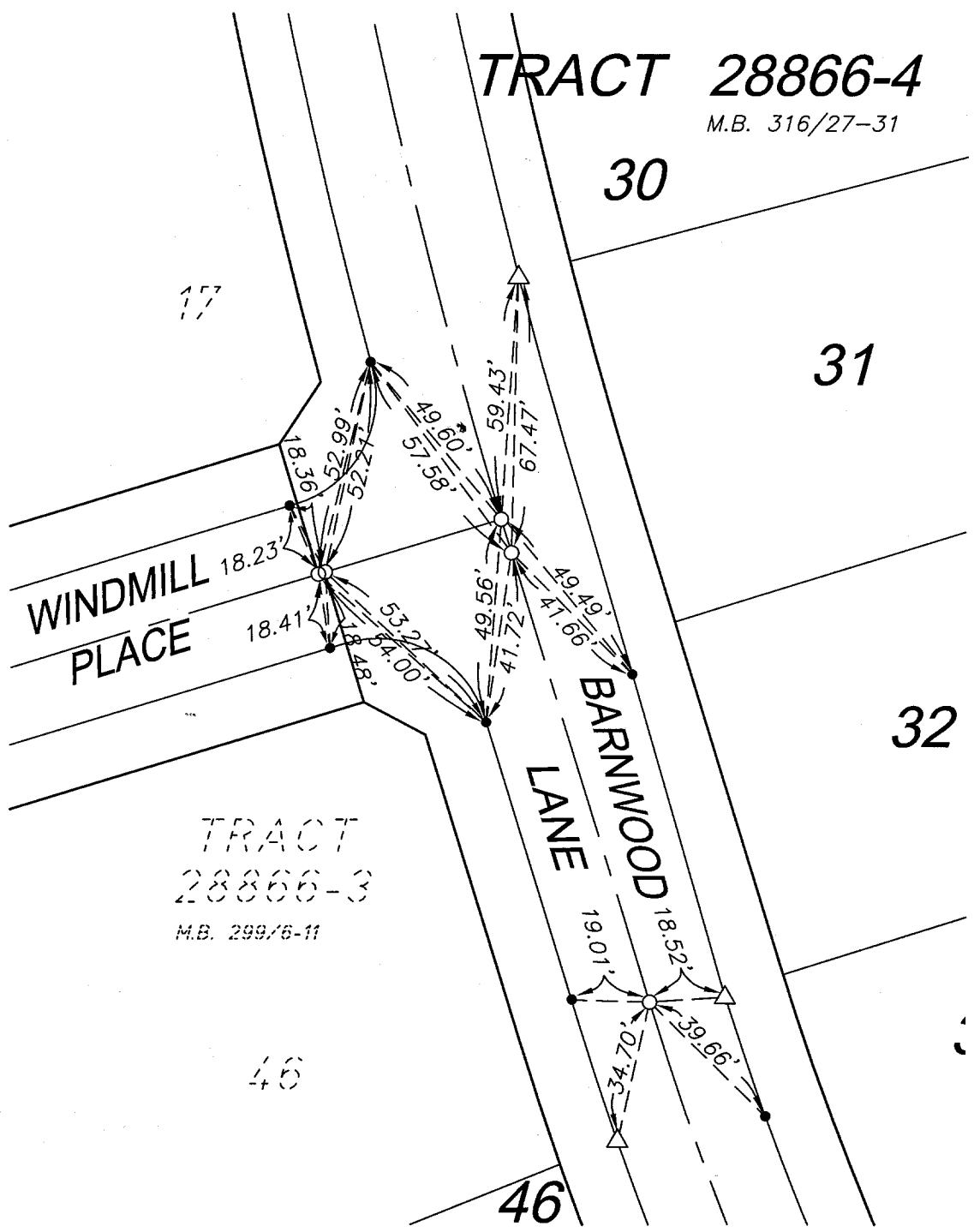
STREET BARNWOOD LN.

X-STREET WINDMILL PL.

OFFICE USE ONLY

LEGEND

- -Set Ramset Nail On T.C.
- -Set Spike and Washer stamped R.C.E. 17550, Flush, In lieu of L.S. 53460.
- △ -Set Nail w/R.C.E. 17550 tag on top of curb at prolongation of side lot lines.



TRACT 28866-4

--- OFFICIAL TIE PLAT ---  
CITY OF RIVERSIDE

SCALE: 1" = 40'

DATE: 4-5-04

DR. BY: C.E.G.

W.O.: 1125-001

PREPARED BY: **C.E.G.** Canty Engineering Group, Inc.  
CIVIL ENGINEERING PLANNING SURVEYING

2020 IOWA Avenue, Suite 102, Riverside, CA 92507  
P.O. Box 52050, Riverside, CA 92517 (909) 683-5234 FAX (909) 683-5301

SHEET

3

OF 5 SHEETS