

1184.TIE

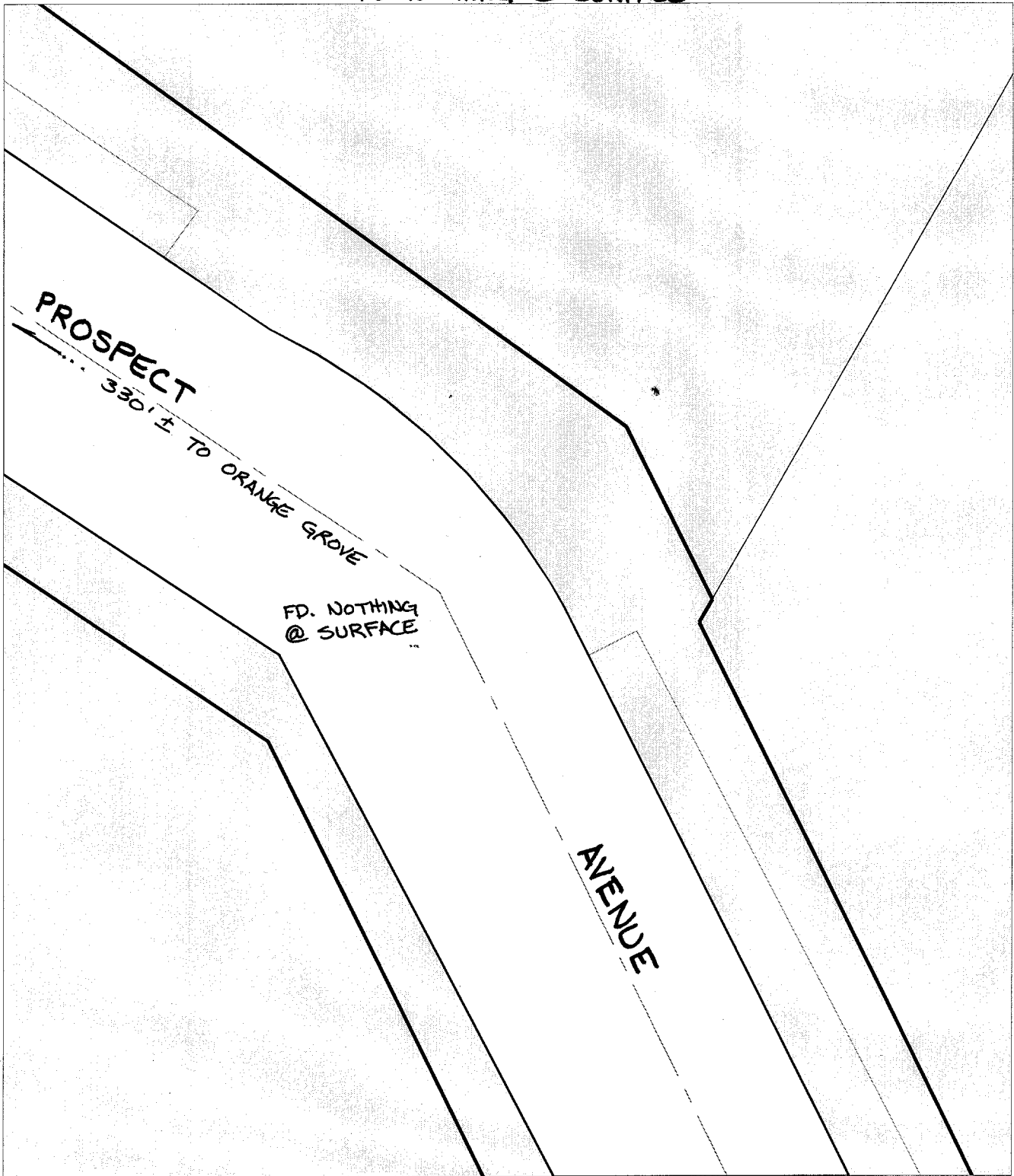
Street:

PROSPECT AVENUE

X-Street ANGLE E OF ORANGE GROVE

OFFICIAL USE ONLY

FD. NOTHING @ SURFACE



- ✕ FD. Ramset Nail on T/C      ● FD. LD. & TK. on T/C
- FD. "C" Nail on T/C      ○ Set LD. & TK. on T/C

P.K. and City Engineer tag to be set @ surface after street construction is complete. (If possible)

Scale: 1" = 20'

Date: 01/23/04

Drawn by: SURVEY

F.B.:

TR-Sec: -

# OFFICIAL TIE PLAT

## CITY OF RIVERSIDE

*These ties are for the purpose of perpetuating the found monumentation. No claim is made as to the relationship of the points or lines shown hereon to true boundary locations.*



Sheet 1 of 1

Cadme MB: 39-4