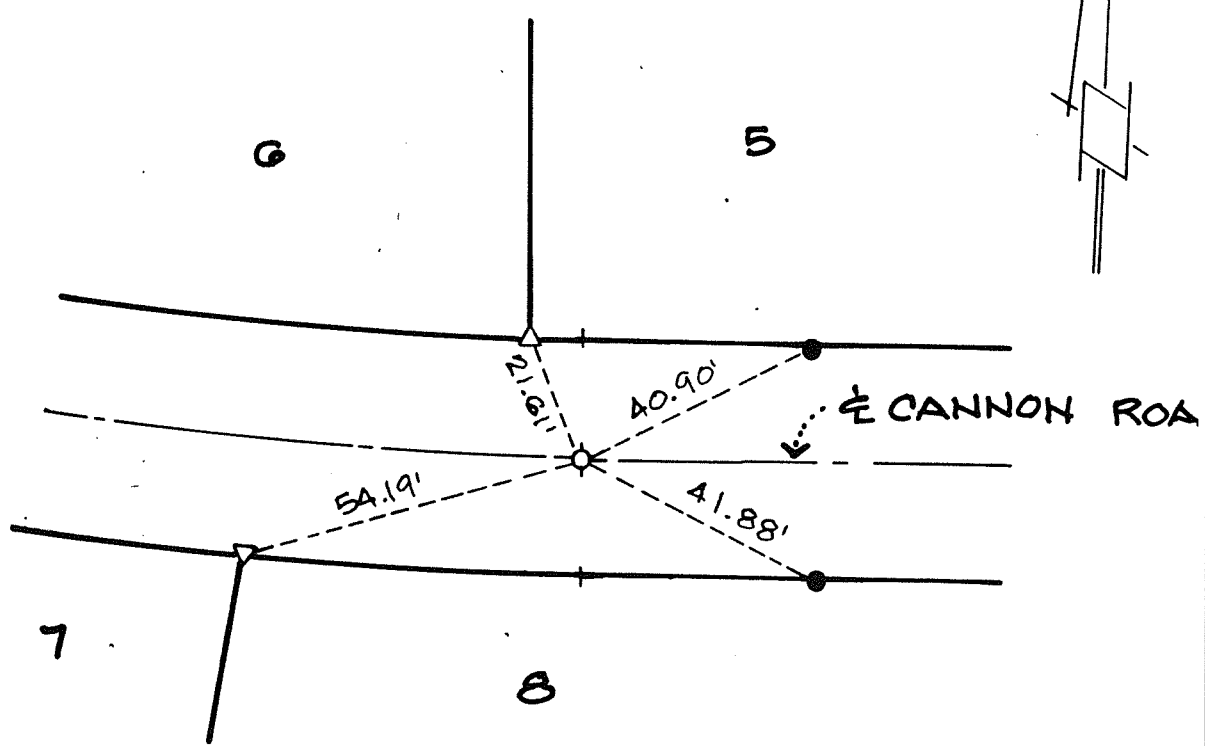


1120.71E

Street: CANNON RD.
1120.71E

X-Street: W6 CITY VIEW CIRCLE
OFFICIAL USE ONLY



- Δ..... INDICATES SET 1" I.P., L.S. 5306, FLUSH,
- INDICATES RAMSET NAIL SET IN CURB.
- Δ..... INDICATES SET NAIL & BRASS TAG L.S. 5306.

TRACT NO. 21685

CITY OF RIVERSIDE, CALIFORNIA

- × FD. Ramset Nail on T/C
- FD. "C" Nail on T/C

- FD. LD. & TK. on T/C
- Set LD. & TK. on T/C

Scale:
Date:
Drawn by:
W.O.:
F.B.:

OFFICIAL TIE PLAT
CITY OF RIVERSIDE

These ties are for the purpose of perpetuating the found monumentation. No claim is made as to the relationship of the points or lines shown hereon to true boundary locations.

✓
Sheet 2 of 38
File No.: