

11223.T1F

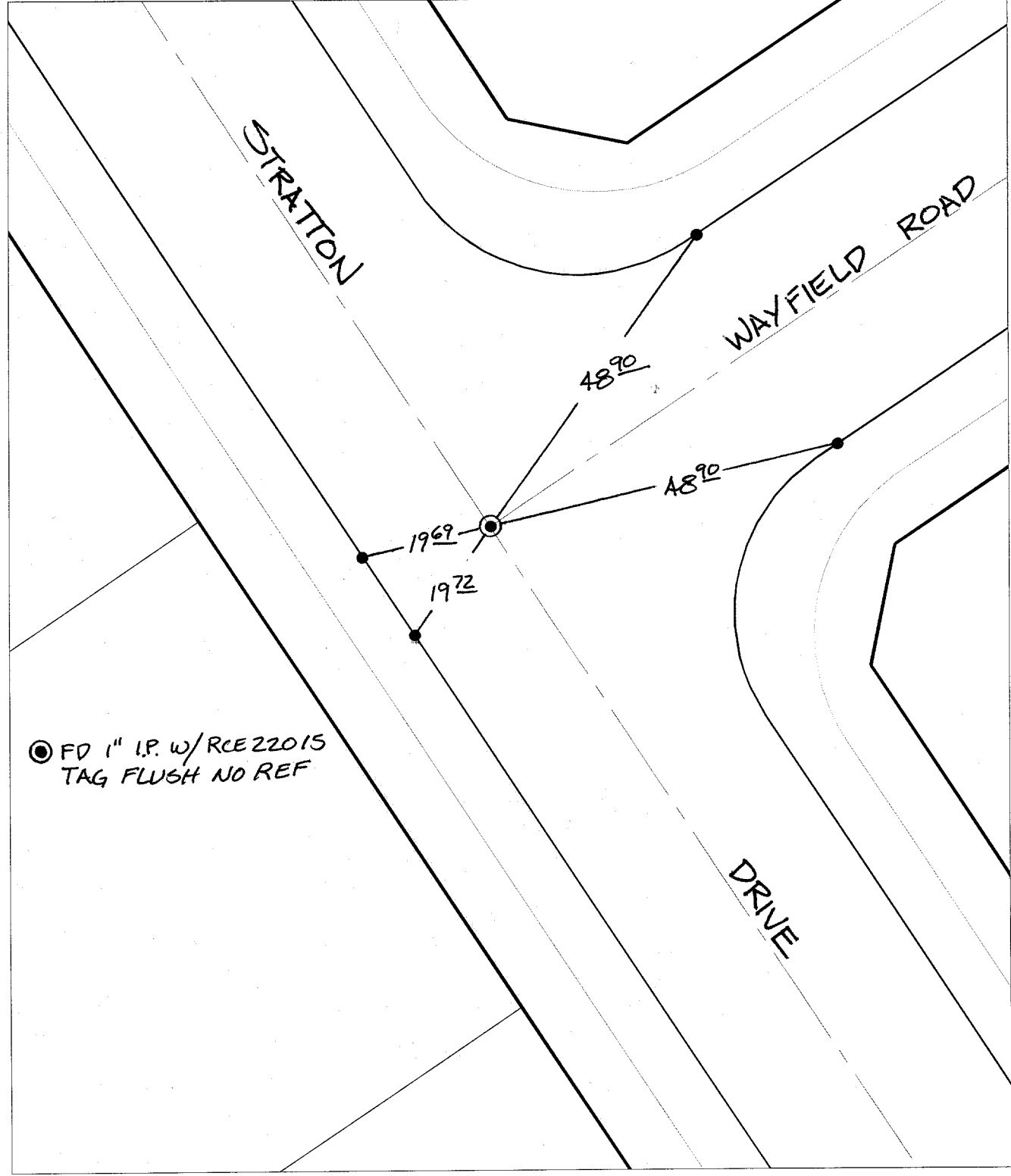
Street:

WAYFIELD ROAD

X-Street:  
OFFICIAL USE ONLY

STRATTON DRIVE

TRANSIT TIES



● FD 1" I.P. w/RCE22015 TAG FLUSH NO REF

✕ FD. Ramset Nail on T/C  
 ■ FD. "C" Nail on T/C

● FD. LD. & TK. on T/C  
 ○ Set LD. & TK. on T/C

P.K. and City Engineer tag to be set @ surface after street construction is complete. (If possible)

Scale: 1" = 20'  
 Date: 12/17/03  
 Drawn by: SURVEY  
 F.B.:  
 TR-Sec: T3SR6W-14

## OFFICIAL TIE PLAT

### CITY OF RIVERSIDE

*These ties are for the purpose of perpetuating the found monumentation. No claim is made as to the relationship of the points or lines shown hereon to true boundary locations.*



Sheet 1 of 1  
 Cadme MB: 79-3