

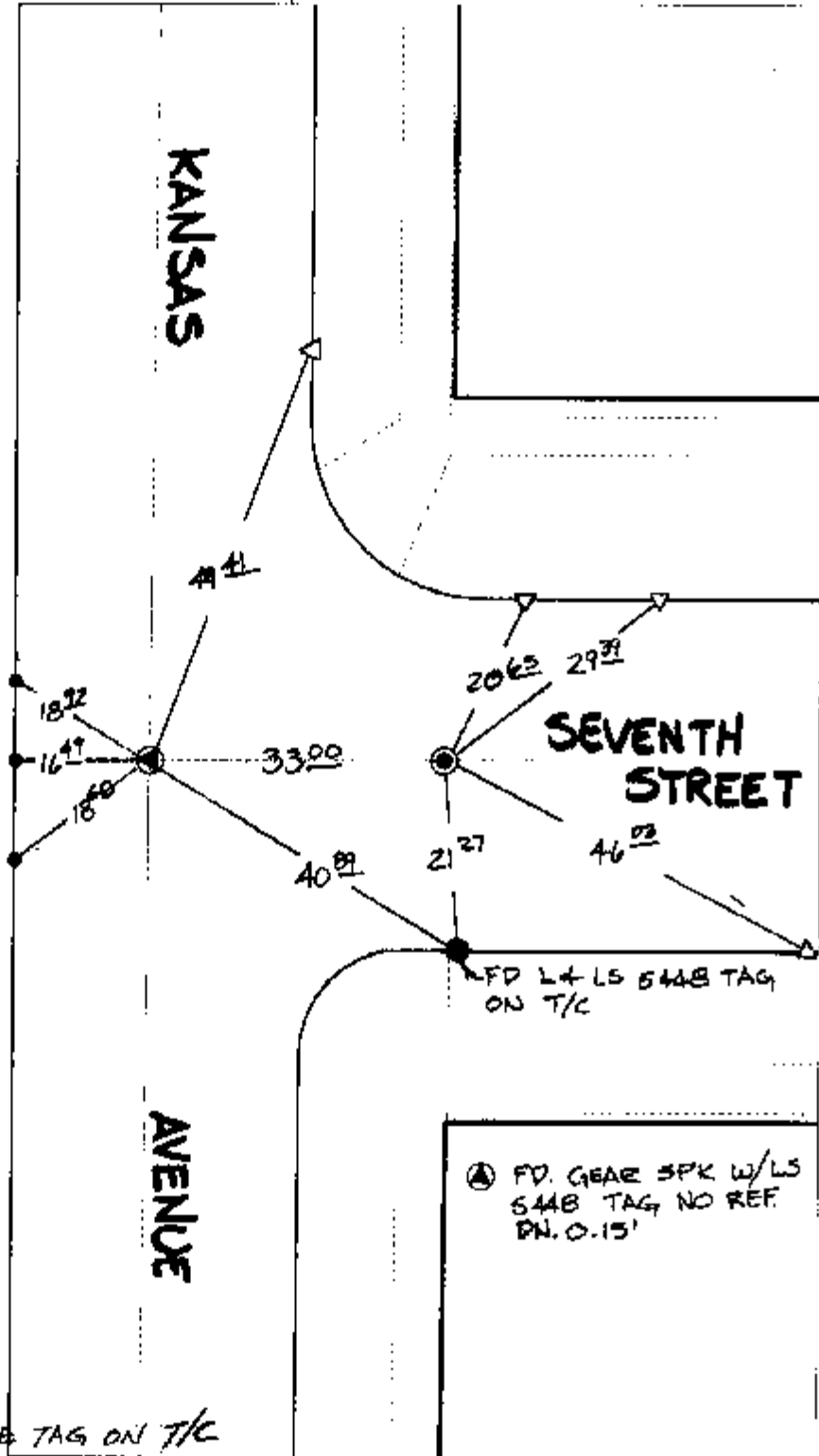
Street:

KANSAS AVENUE

OFFICIAL USE ONLY

X-Street: SEVENTH STREET E.L.Y

TRANSIT + SWING TIES



REF: CRFB 79B/4

● FD. 1/4" I.P. PER. CRFB 79B/4 DN. 0.10'

⊙ FD. GEAR SPK W/LS 544B TAG NO REF. DN. 0.15'

~~△ SET PK NAIL W/CITY TIE TAG ON T/C~~

- × FD. Ramset Nail on T/C
- FD. LD. & TK. on T/C
- FD. "C" Nail on T/C
- Set LD. & TK. on T/C

P.K. and City Engineer tag to be set @ surface after street construction is complete. (if possible)

Scale: 1" = 20'

Date: 02/14/03

Drawn by: SURVEY

F.B.:

TR-Sec: T2SR5W-24

# OFFICIAL TIE PLAT

## CITY OF RIVERSIDE

*These ties are for the purpose of perpetuating the found monumentation. No claim is made as to the relationship of the points or lines shown hereon to true boundary locations.*



Sheet 1 of 1

Cadme MB: 40-2