

11242.TIF

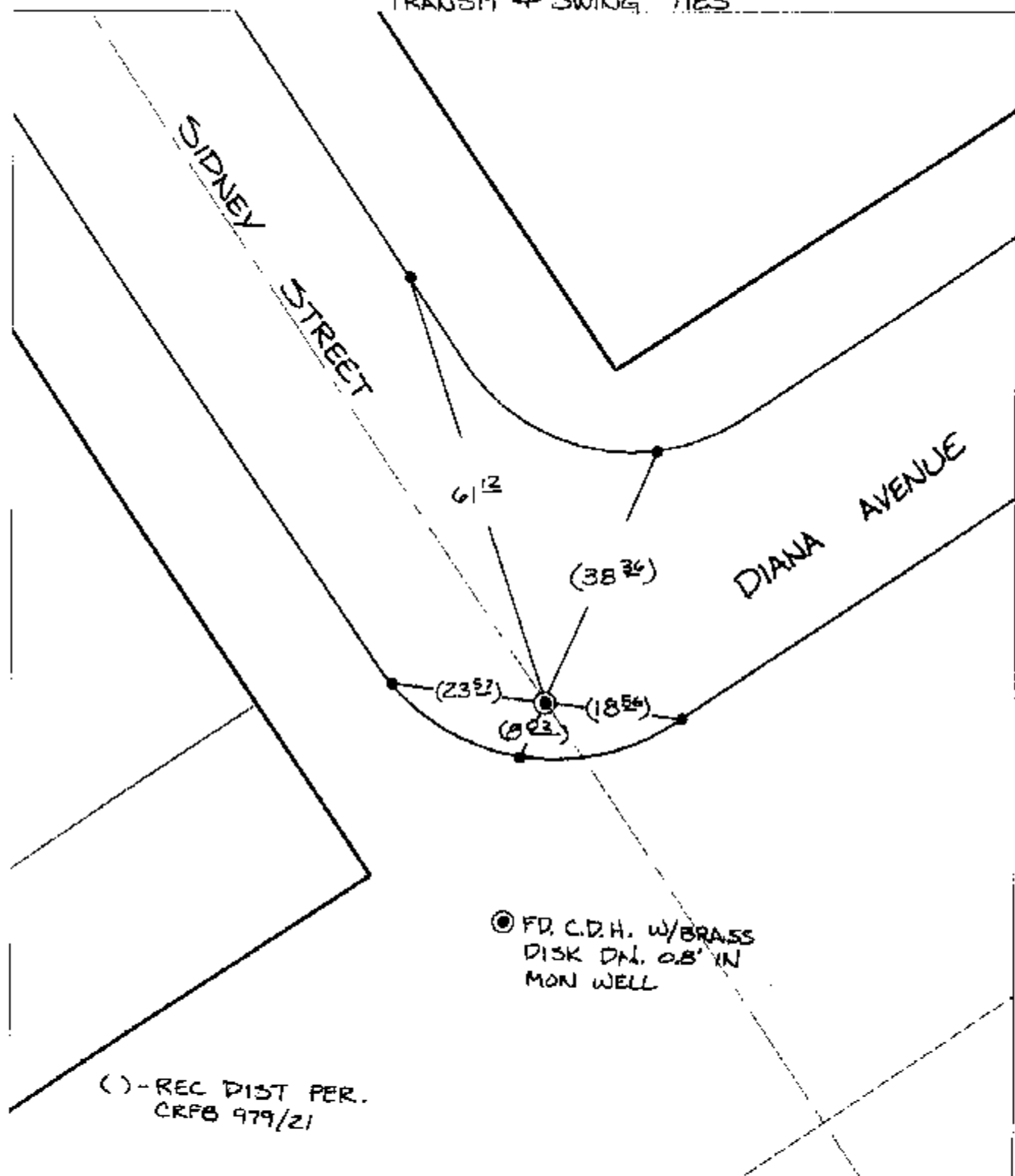
Street:

SIDNEY STREET

X-Street: OFFICIAL USE ONLY

DIANA AVENUE

TRANSIT + SWING TIES



● FD. C.D.H. w/BRASS DISK DIA. 0.8" IN MON WELL

( ) - REC DIST PER. CRFB 979/21

- ✕ FD. Ramset Nail on T/C    ● FD. LD. & TK. on T/C
- FD. "C" Nail on T/C    ○ Set LD. & TK. on T/C

P.K. and City Engineer tag to be set @ surface after street construction is complete. (if possible)

Scale: 1" = 20'

Date: 12/17/03

Drawn by: SURVEY

F.B.:

TR-Sec: T3SR5W-7

## OFFICIAL TIE PLAT

### CITY OF RIVERSIDE

*These ties are for the purpose of perpetuating the found monumentation. No claim is made as to the relationship of the points or lines shown hereon to true boundary locations.*



Sheet 1 of 1  
Cadme MB: 66-8