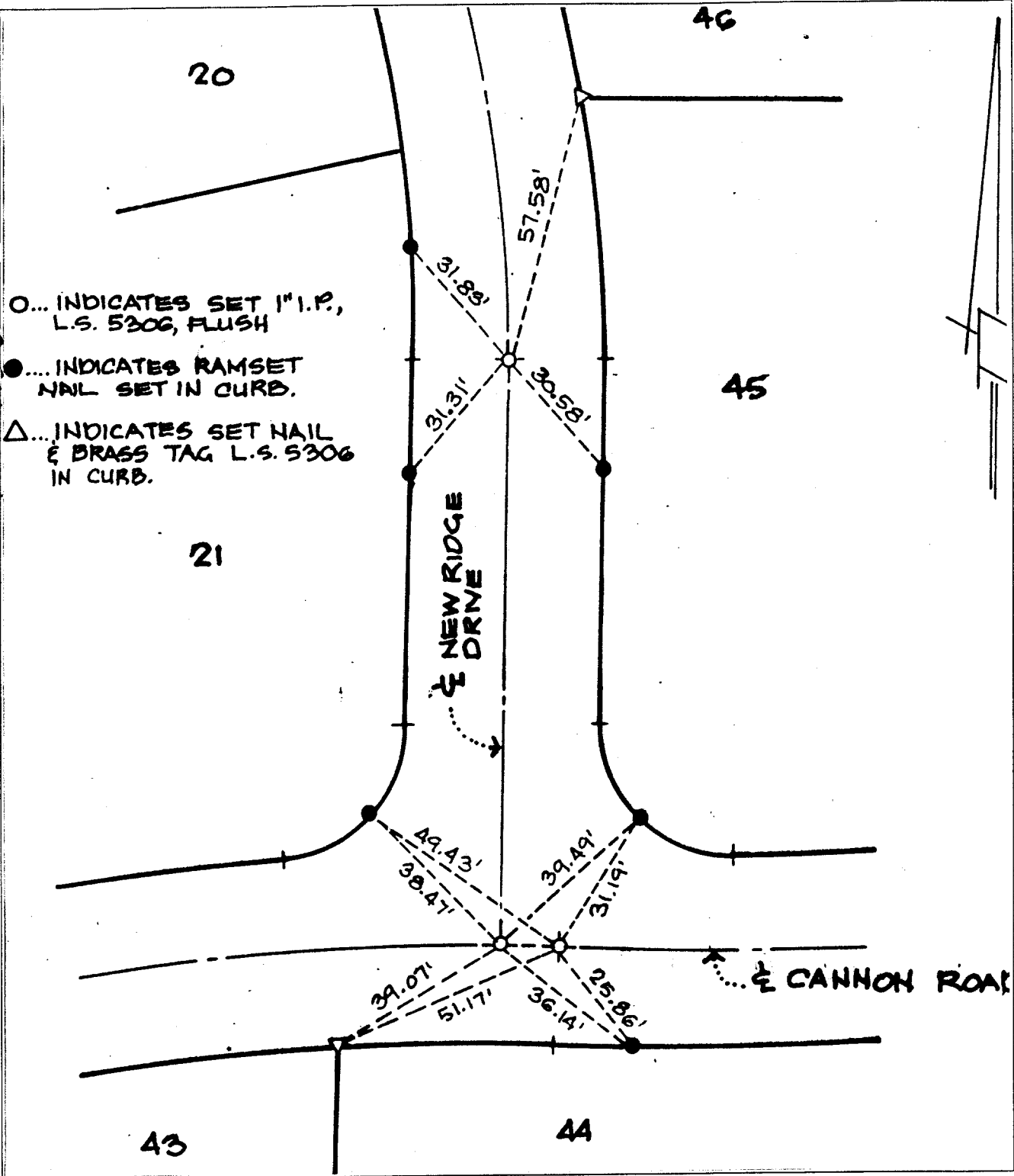


Street: CANNON RD.

X-Street: NEW RIDGE DR.

OFFICIAL USE ONLY



○... INDICATES SET 1" I.P., L.S. 5306, FLUSH

●... INDICATES RAMSET NAIL SET IN CURB.

△... INDICATES SET NAIL & BRASS TAG L.S. 5306 IN CURB.

× FD. Ramset Nail on T/C      ● FD. LD. & TK. on T/C

■ FD. "C" Nail on T/C      ○ Set LD. & TK. on T/C

**OFFICIAL TIE PLAT**  
CITY OF RIVERSIDE

*These ties are for the purpose of perpetuating the found monumentation. No claim is made as to the relationship of the points or lines shown hereon to true boundary locations.*

Scale:

Date:

Drawn by:

W.O.:

F.B.:

Sheet 1 of 1

File No.:

FILE 1126.9211