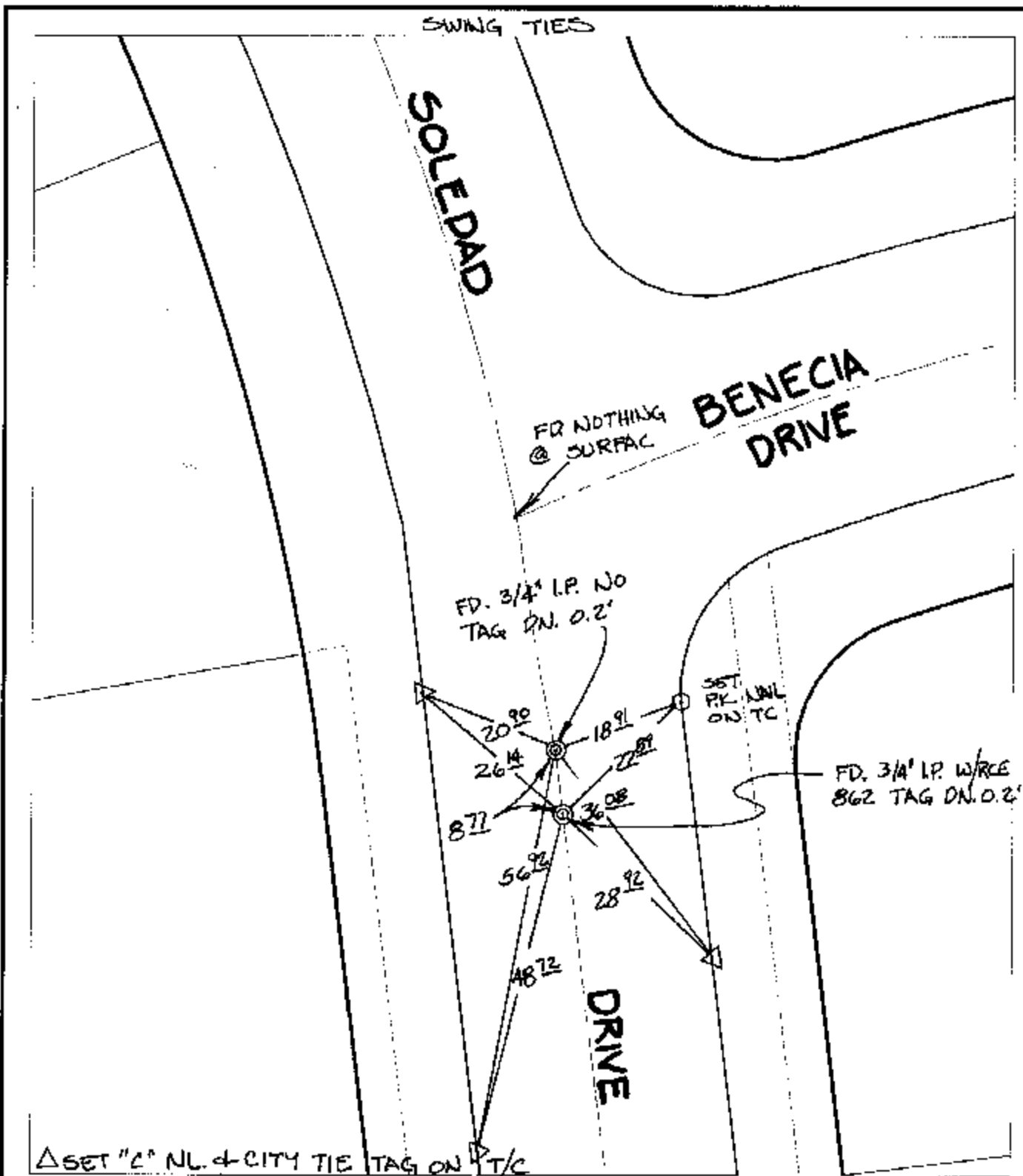


11306 TIE

Street: BENECIA DRIVE
X-Street: SOLEDAD DRIVE
OFFICIAL USE ONLY

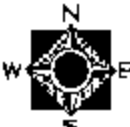


-

Scale: 1" = 20'
 Date: 10/08/04
 Drawn by: SURVEY
 F.B.:
 TR-Sec: T2SR5W-32

OFFICIAL TIE PLAT
CITY OF RIVERSIDE

These ties are for the purpose of perpetuating the found monumentation. No claim is made as to the relationship of the points or lines shown hereon to true boundary locations.



Sheet 1 of 1
 Cadme MB: 36-8