

Street:

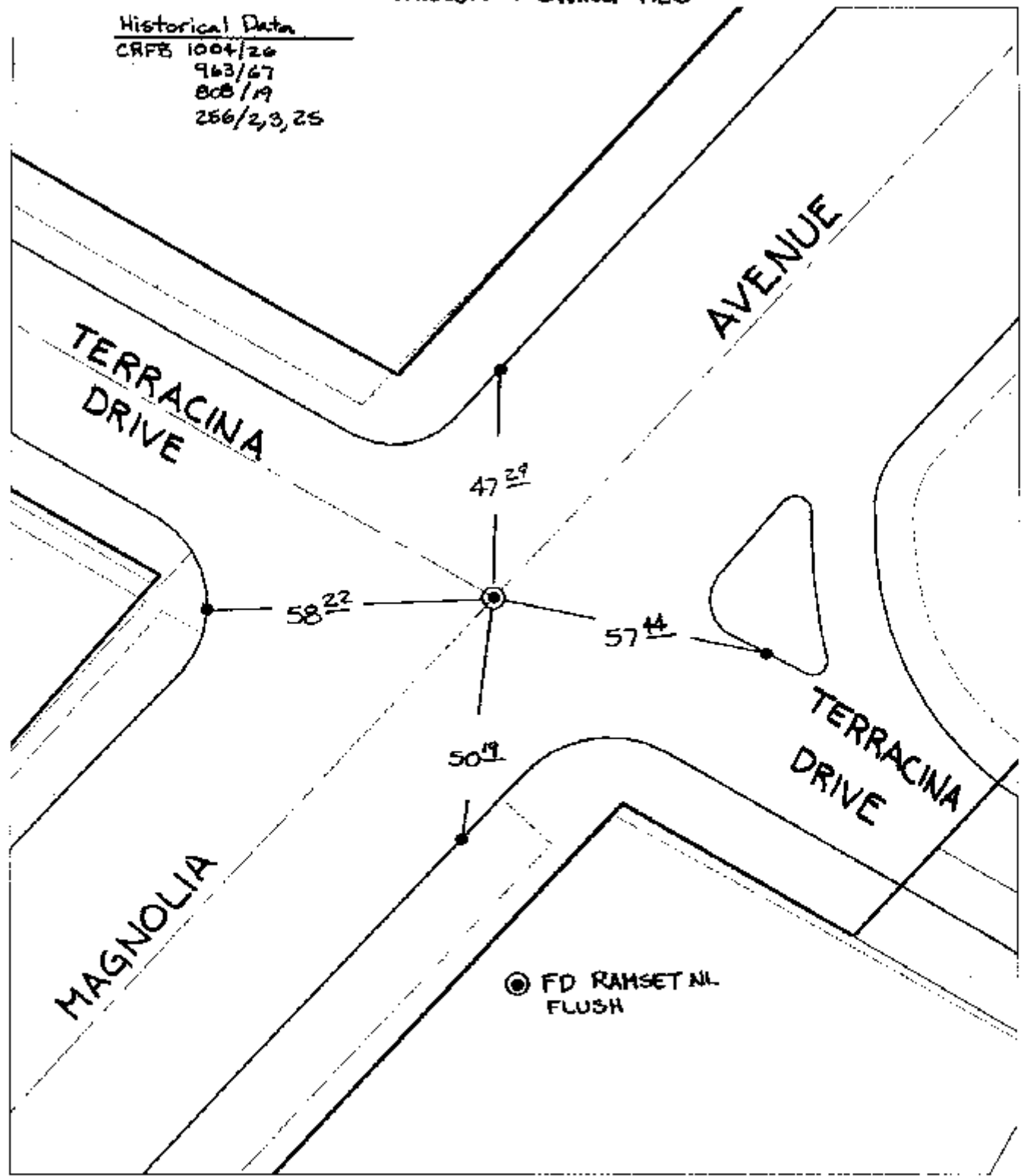
MAGNOLIA AVENUE

OFFICIAL USE ONLY X-Street:

TERRACINA DRIVE

TRANSIT & SWING TIES

Historical Data  
CRFB 1004/20  
963/67  
808/19  
256/2,3,25



- ✕ FD. Ramset Nail on T/C
- FD. LD. & TK. on T/C
- FD. "C" Nail on T/C
- Set LD. & TK. on T/C
- P.K. and City Engineer tag to be set @ surface after street construction is complete. (If possible)

Scale: 1" = 30'  
 Date: 05/17/04  
 Drawn by: SURVEY  
 F.B.:  
 TR-Sec: -

**OFFICIAL TIE PLAT**  
 CITY OF RIVERSIDE



*These ties are for the purpose of perpetuating the found monumentation. No claim is made as to the relationship of the points or lines shown hereon to true boundary locations.*

Sheet 1 of 1  
 Cadme MB: 39-3