

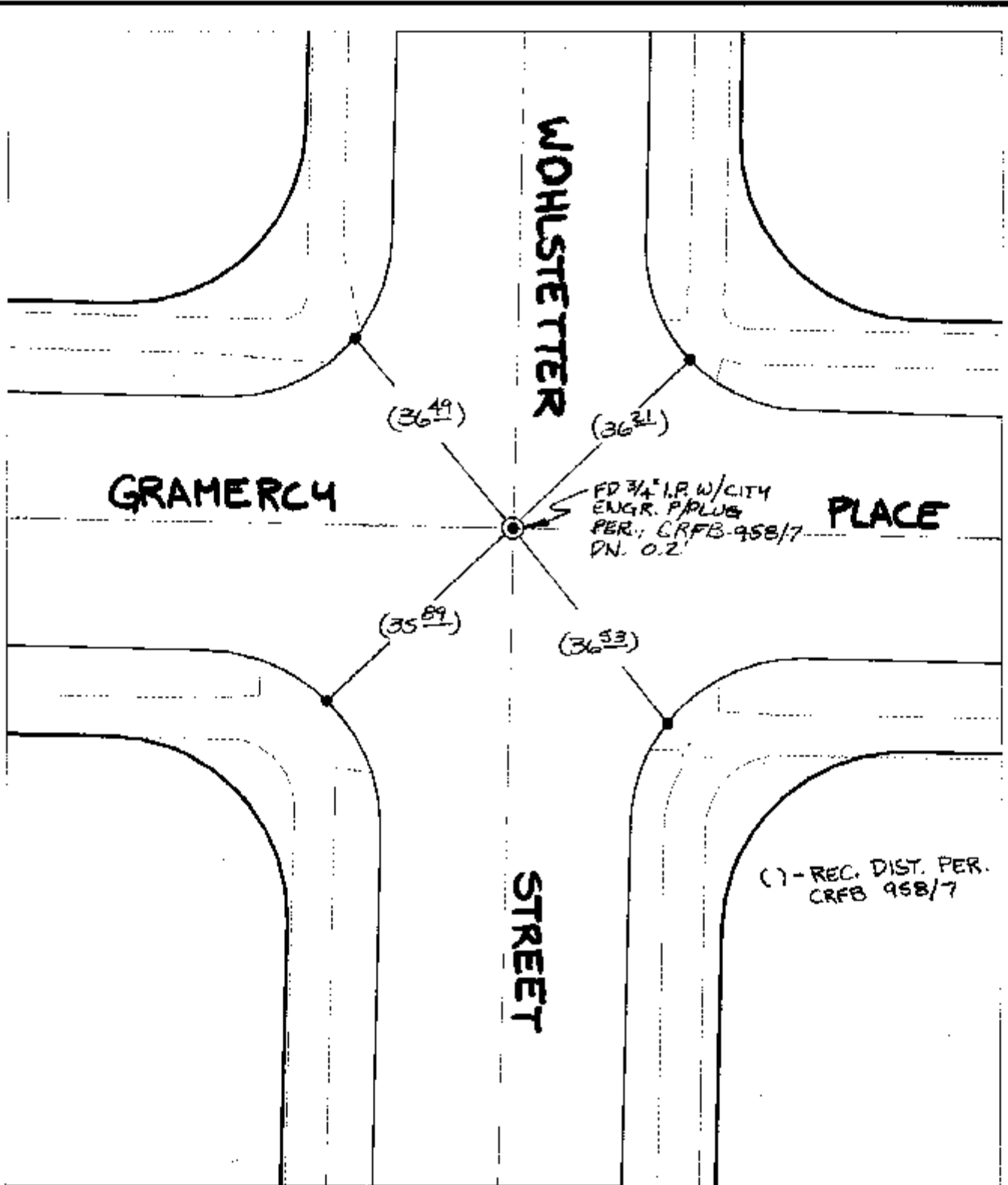
11328 TIE

Street:

GRAMERCY PLACE

OFFICIAL USE ONLY

X-Street: WOHLSTETTER STREET



( ) - REC. DIST. PER. CRFB 958/7

FD 3/4" I.P.W./CITY ENGR. P/PLUS PER. CRFB-958/7 DN. 0.2'

- ✕ FD. Ramset Nail on T/C    ● FD. LD. & TK. on T/C
- FD. "C" Nail on T/C    ○ Set LD. & TK. on T/C

P.K. and City Engineer tag to be set @ surface after street construction is complete. (If possible)

Scale: 1" = 20'

Date: 04/01/04

Drawn by: SURVEY

F.B.:

TR-Sec: T3SR6W-1

## OFFICIAL TIE PLAT

### CITY OF RIVERSIDE

*These ties are for the purpose of perpetuating the found monumentation. No claim is made as to the relationship of the points or lines shown hereon to true boundary locations.*



Sheet 1 of 1

Cadme MB: 50-7