

11360.TIE

Street:

ALTADENA DRIVE

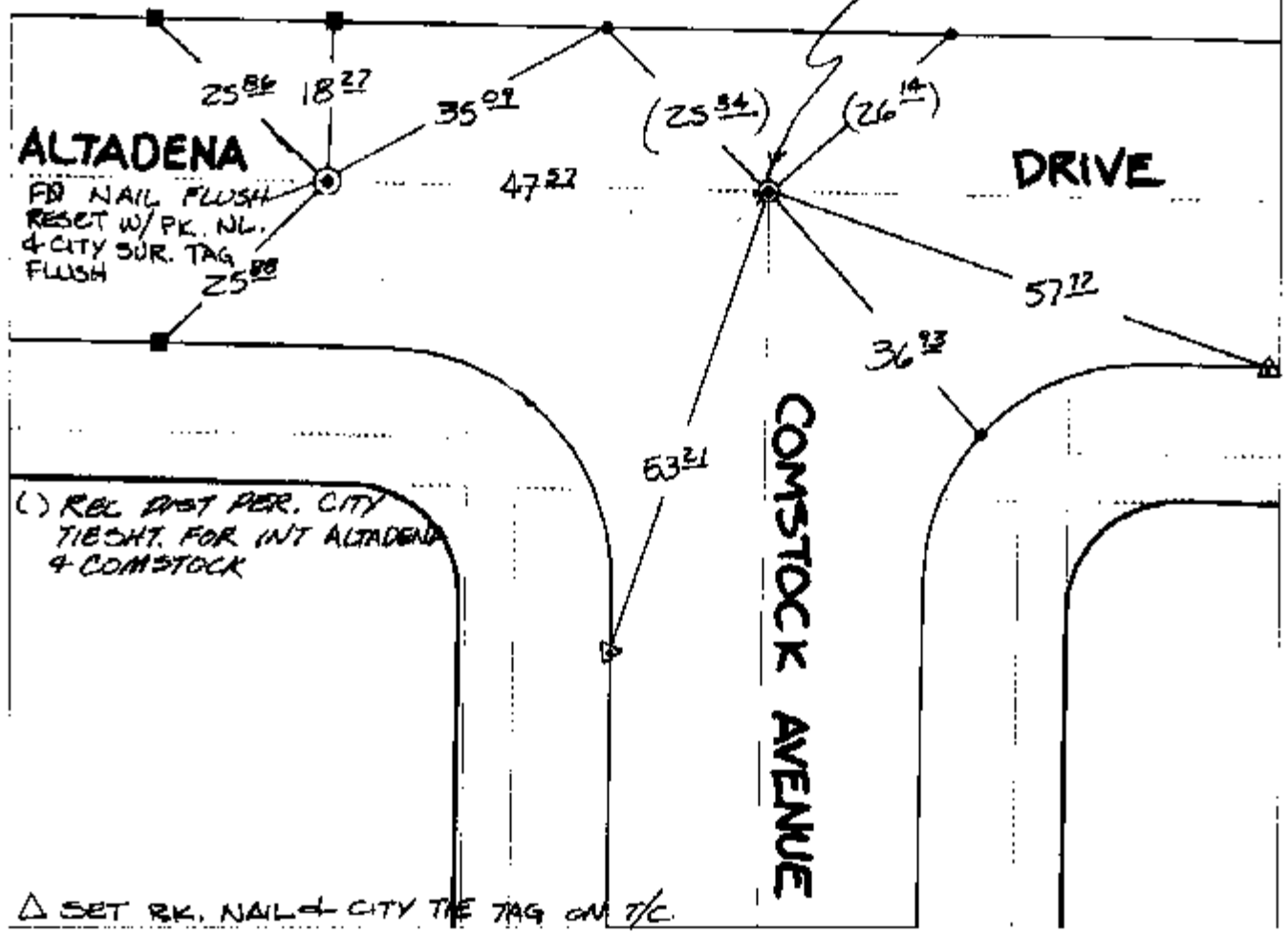
OFFICIAL USE ONLY

X-Street:

COMSTOCK AVENUE

SWING TIES
REF.: CITY TIE SHT FOR INT. ALTADENA +
COMSTOCK.

FD. 1" I.P. W/L.S. 2785 TAG
FLUSH RESET. P.K. NL. +
CITY SUR. TAG FLUSH



△ SET RK. NAIL + CITY TIE TAG ON T/C

- × FD. Ramset Nail on T/C
 - FD. LD. & TK. on T/C
 - FD. "C" Nail on T/C
 - Set LD. & TK. on T/C
- P.K. and City Engineer tag to be set @ surface after street construction is complete. (If possible)

Scale: 1" = 20'
 Date: 08/20/02
 Drawn by: SURVEY
 F.B.:
 TR-Sec: T2SR6W-35

OFFICIAL TIE PLAT

CITY OF RIVERSIDE

These ties are for the purpose of perpetuating the found monumentation. No claim is made as to the relationship of the points or lines shown hereon to true boundary locations.



Sheet 1 of 1
 Cadme MB: 49-2