

# TRACT 25486-3

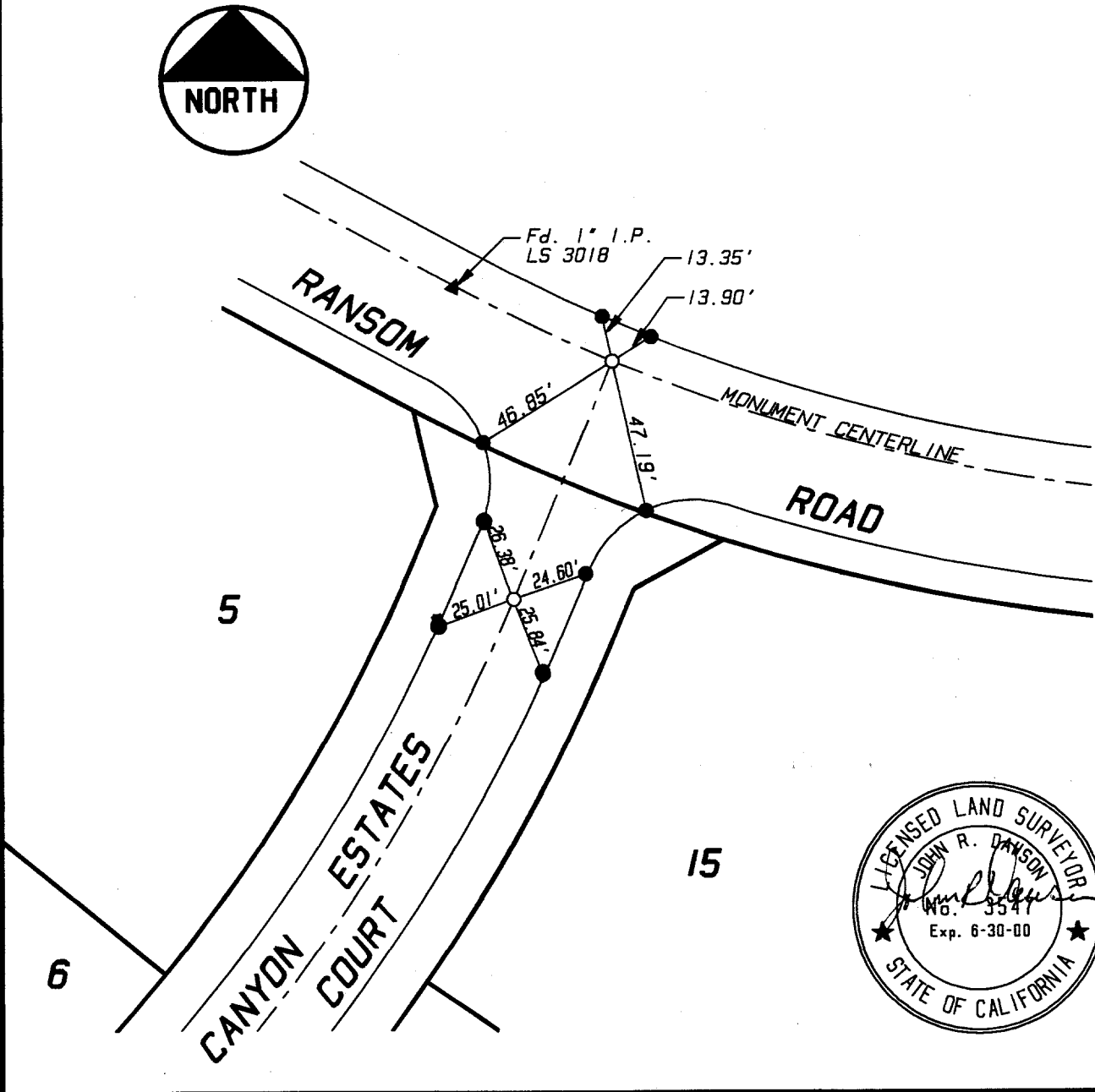
RECORDED IN M.B. 264/43-46

ALL TIES ARE TRANSIT TIES UNLESS OTHERWISE NOTED

- INDICATES SET 8" BOAT SPIKE AND WASHER FLUSH TAGGED L.S. 3547
- INDICATES SET NAIL IN TOP OF CURB
- ⊙ INDICATES SET NAIL AND L.S. TAG IN CURB ON LOT LINE PROJECTED UNLESS OTHERWISE NOTED



STREET CANYON ESTATES CT. OFFICE USE ONLY X-STREET RANSOM RD.



V.D. 128.06  
DVG. TIESHTS\BEREM\25486-31

SCALE: 1" = 50'  
DATE: 5-11-98  
DR. BY: SRD  
W.O.: 128.06  
F.B.: |

## OFFICIAL TIE PLAT CITY OF RIVERSIDE

PREPARED BY:



**INTEGRA ENGINEERING, INC.**  
LAND SURVEYORS \* CIVIL ENGINEERS  
621 E. CARNEGIE DRIVE, #120, SAN BERNARDINO, CA. 92408  
TELEPHONE (909) 383-0200 FAX (909) 383-0203

SHEET 1

OF 3 SHEETS  
FILE No.: