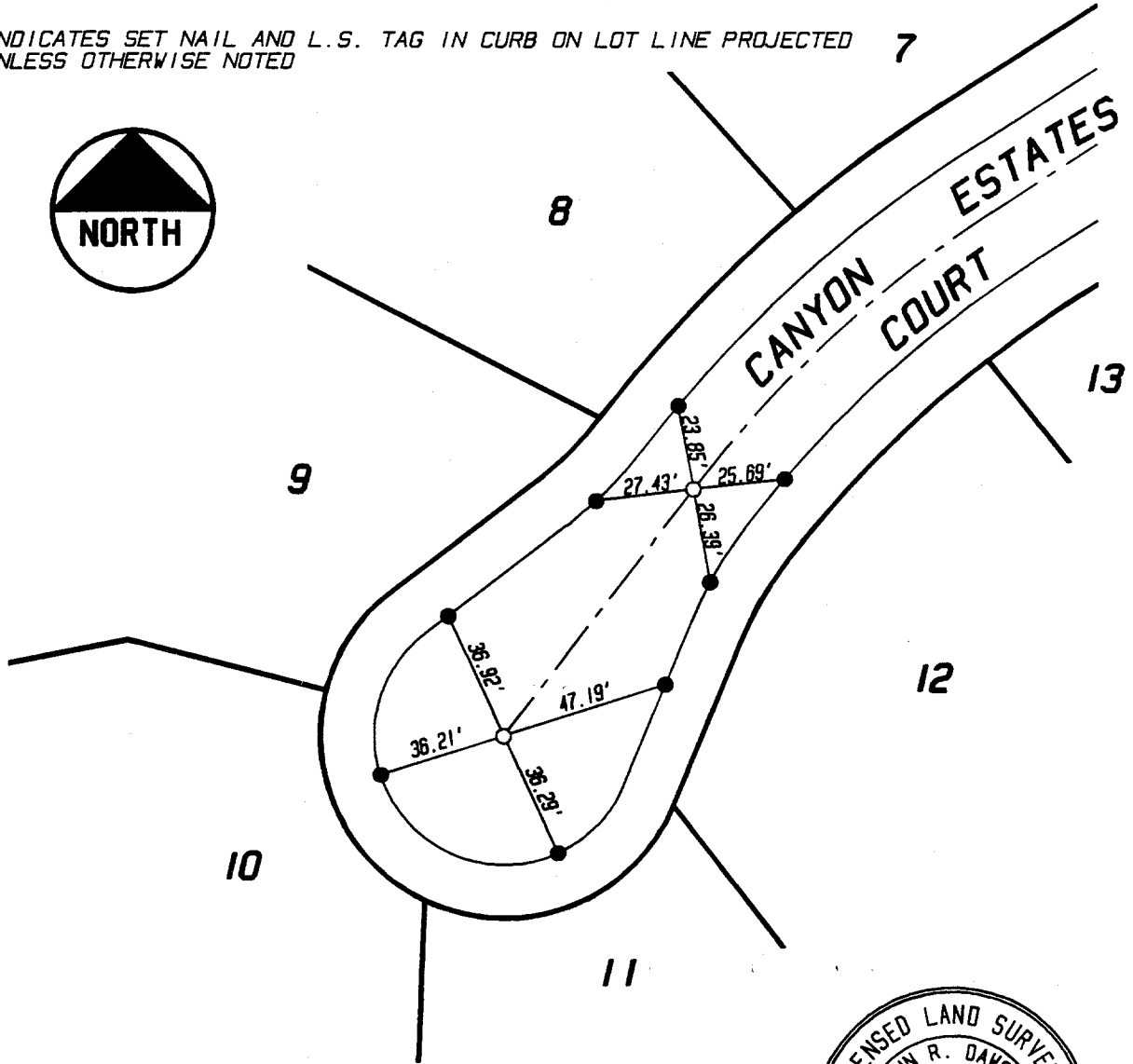


# TRACT 25486-3

RECORDED IN M.B. 264/43-46

ALL TIES ARE TRANSIT TIES UNLESS OTHERWISE NOTED

- INDICATES SET 8" BOAT SPIKE AND WASHER FLUSH TAGGED L.S. 3547
- INDICATES SET NAIL IN TOP OF CURB
- ⊙ INDICATES SET NAIL AND L.S. TAG IN CURB ON LOT LINE PROJECTED UNLESS OTHERWISE NOTED



STREET CANYON ESTATES CT. X-STREET C CUL-DE-SAC. OFFICE USE ONLY

V.O. 128.06  
DVG. TIESHTS\BEREN\25486-33

1143. TIF

SCALE: 1" = 50'  
DATE: 5-11-98  
DR. BY: SRD  
W.O.: 128.06  
F.B.: 1

## OFFICIAL TIE PLAT CITY OF RIVERSIDE

PREPARED BY:



**INTEGRA ENGINEERING, INC.**

LAND SURVEYORS \* CIVIL ENGINEERS  
621 E. CARNEGIE DRIVE, #120, SAN BERNARDINO, CA. 92408  
TELEPHONE (909) 383-0200 FAX (909) 383-0203

SHEET 3

OF 3 SHEETS

FILE No.: