

11504.TIF

Street: CENTRAL AVE

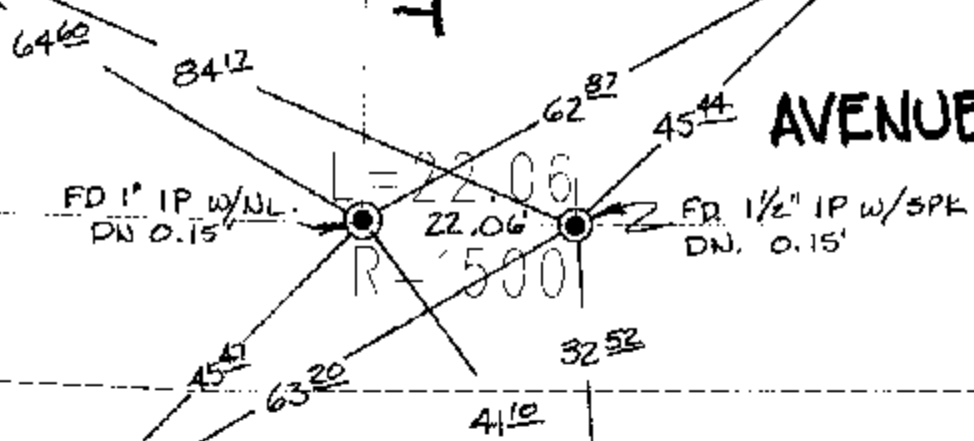
X-Street: FREMONT ST.

SWING TIES

FREMONT STREET

CENTRAL

AVENUE



Scale: 1" = 20'
 Date: 07/10/03
 Drawn by: scurtis
 F.B.:
 TR-Sec: T2SR5W-31

OFFICIAL TIE PLAT
 CITY OF RIVERSIDE

These ties are for the purpose of perpetuating the found monumentation. No claim is made as to the relationship of the points or lines shown hereon to true boundary locations.

Sheet 1 of 1
 Cadme MB: 51-2