

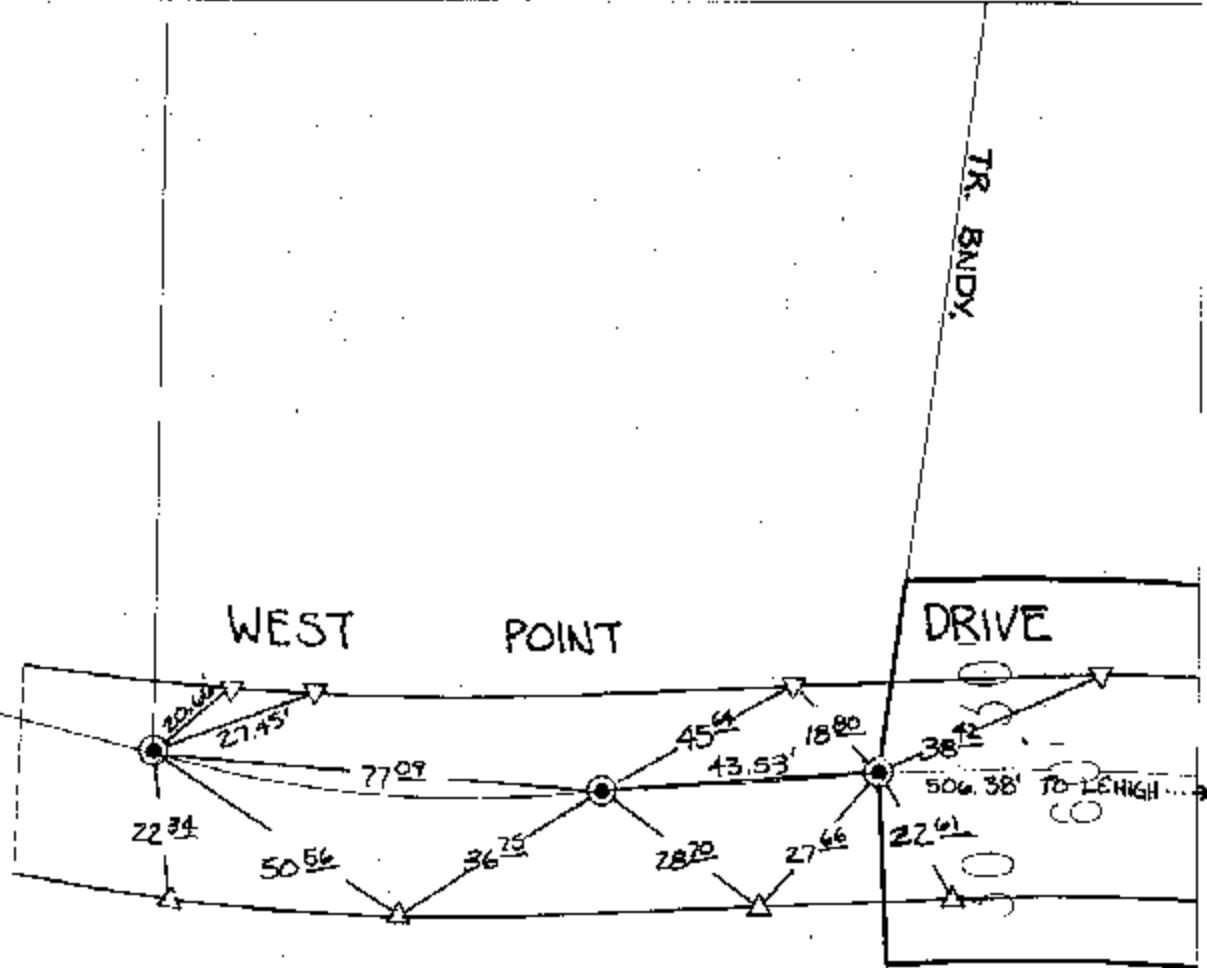
11513.71F

Street:

WEST POINT DRIVE

OFFICIAL USE ONLY X-Street, EC, TR BNDY W OF LEHIGH

SWING TIES



⊙ FD 1" I.P. W/L 4055  
TAG DN 005'  
NO REF.

- ✕ FD. Ramset Nail on T/C
- FD. LD. & TK. on T/C
- FD. "C" Nail on T/C
- Set LD. & TK. on T/C

P.K. and City Engineer tag to be set @ surface after street construction is complete. (If possible)

Scale: 1" = 30'  
Date: 08/24/04  
Drawn by: SURVEY  
F.B.:  
TR-Sec: T2SR4W-33

## OFFICIAL TIE PLAT

### CITY OF RIVERSIDE



*These ties are for the purpose of perpetuating the found monumentation. No claim is made as to the relationship of the points or lines shown hereon to true boundary locations.*

Sheet 1 of 1  
Cadme MB: 57-2