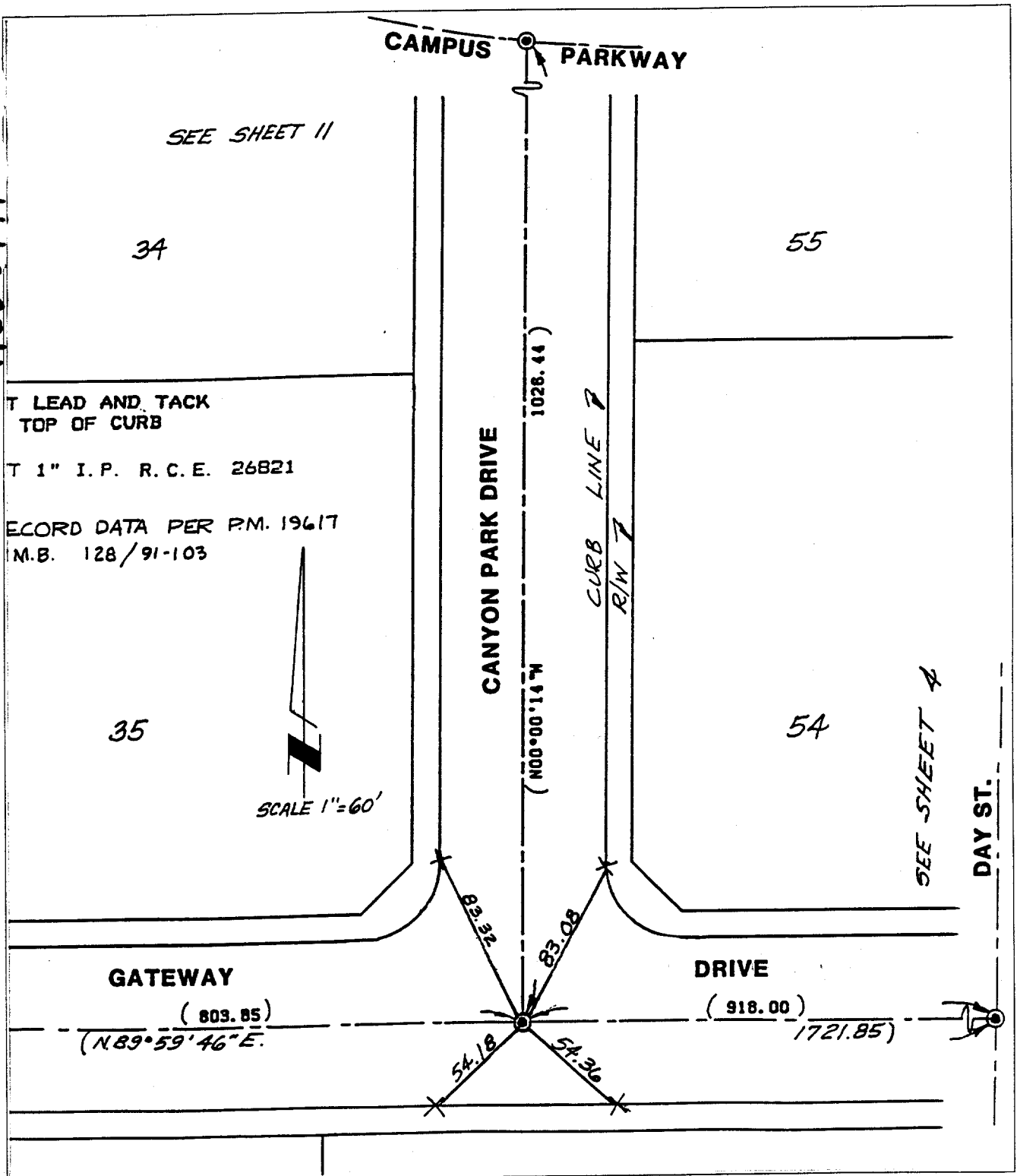


1152.TIF



X FD. Ramset Nail on T/C
 ■ FD. "C" Nail on T/C

● FD. LD. & TK. on T/C
 ○ Set LD. & TK. on T/C

OFFICIAL TIE PLAT

CITY OF RIVERSIDE

These ties are for the purpose of perpetuating the found monumentation. No claim is made as to the relationship of the points or lines shown hereon to true boundary locations.

Scale:

Date:

Drawn by:

W.O.:

F.B.:

Sheet **5** of 18

File No.:

Street: CANYON PARK DR.

OFFICIAL USE ONLY

X-Street: GATEWAY DR

DAY ST.

SEE SHEET 4

SEE SHEET 11

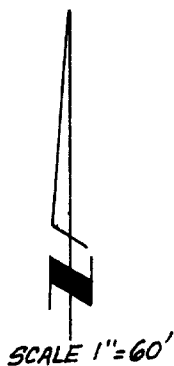
34

55

T LEAD AND TACK
TOP OF CURB

T 1" I. P. R. C. E. 26821

RECORD DATA PER P.M. 19617
M.B. 128/91-103



35

54

GATEWAY

DRIVE

(803.85)
(N.89°59'46"E.)

(918.00)
1721.85

1028.44

(N00°00'14"W)

CANYON PARK DRIVE

CURB LINE
R/W

83.22

83.08

54.18

54.36