

Street:

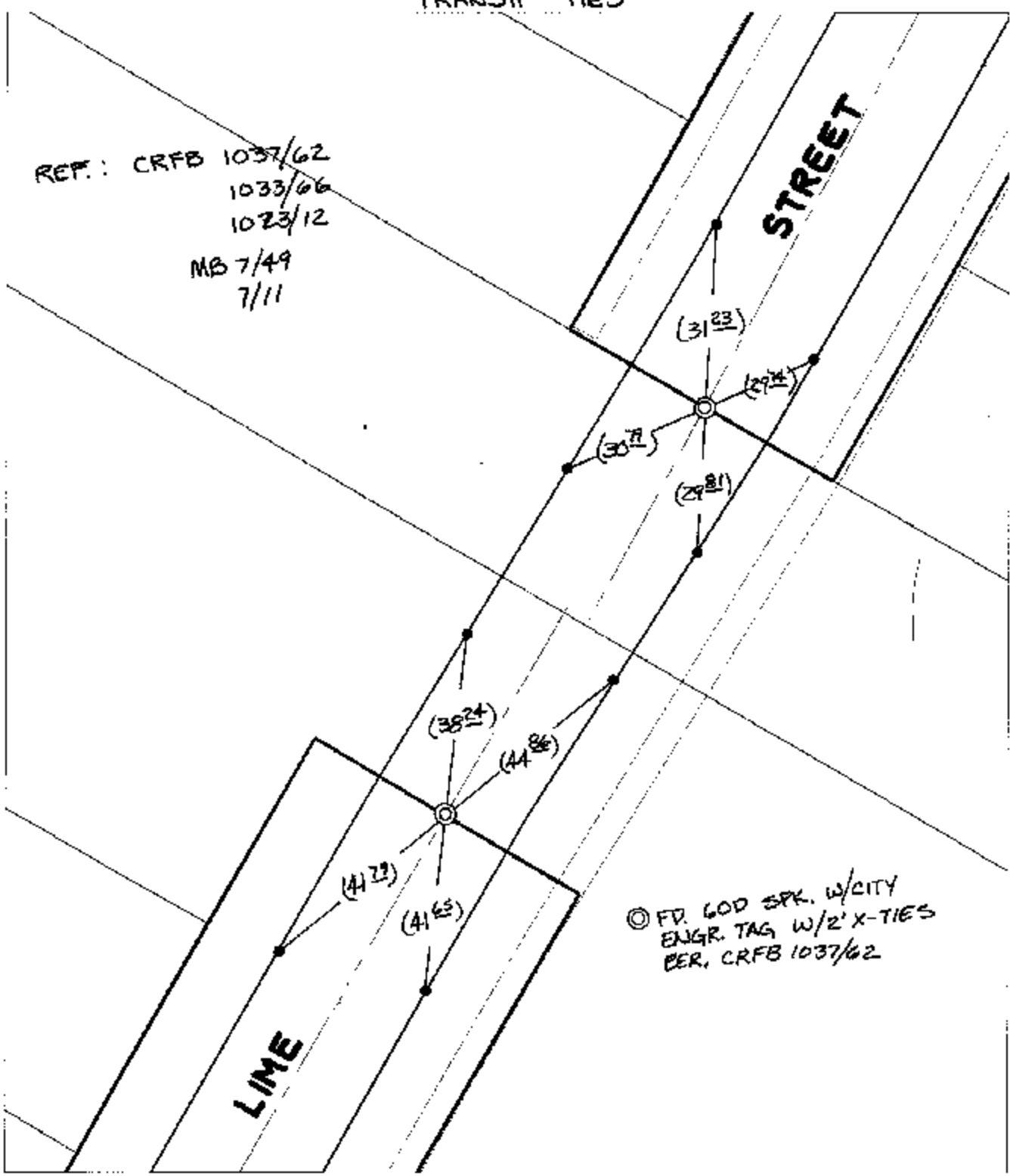
LIME STREET

X-Street:  
OFFICIAL USE ONLY

ANGLE PT ON CL.

TRANSIT TIES

REF.: CRFB 1037/62  
1033/66  
1023/12  
MB 7/49  
7/11



- ✕ FD. Ramset Nail on T/C      ● FD. LD. & TK. on T/C      P.K. and City Engineer tag to be set @ surface after street construction is complete. (if possible)
- FD. "C" Nail on T/C      ○ Set LD. & TK. on T/C

Scale: 1" = 30'  
 Date: 02/14/03  
 Drawn by: SURVEY  
 F.B.:  
 TR-Sec: -

## OFFICIAL TIE PLAT

### CITY OF RIVERSIDE

*These ties are for the purpose of perpetuating the found monumentation. No claim is made as to the relationship of the points or lines shown hereon to true boundary locations.*



Sheet 1 of 1  
 Cadme MB: 25-5