

11537.TIF

STREET ATTICA DR.

X-STREET NASSAU ST.

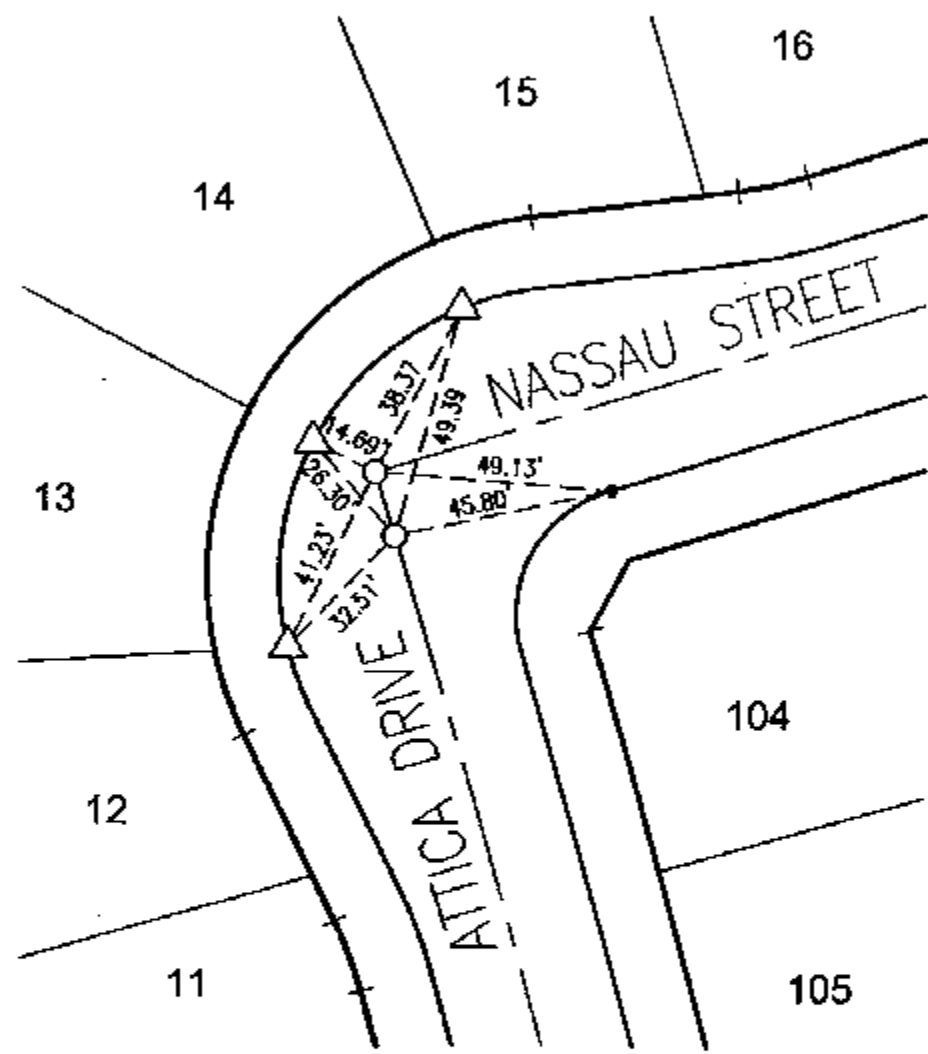
OFFICE USE ONLY

TRACT 21709-2

M.B. 279/28-31

LEGEND

- -Set Nail on T.C.
- △ -Set Nail and R.C.E. 17550 Tag in top of curb at the prolongation of side lot lines.
- -Set 1/2" Spike and R.C.E. 17550 Tag, Flush unless otherwise noted.



SCALE: 1"=40'
 DATE: 12/2004
 DR. BY: CEG
 W.O.: 1127-005

--- OFFICIAL TIE PLAT ---
 CITY OF RIVERSIDE

PREPARED BY: **CEG** *Carly Engineering Group, Inc.*
 CIVIL ENGINEERING PLANNING SURVEYING
 2010 IOWA Avenue, Suite 110, Riverside, CA 92507
 P.O. Box 52050, Riverside, CA 92517 (951) 683-5234 FAX (951) 683-5301

SHEET
2
 OF 13 SHEETS