

11538.TIF

STREET JOSEPH ST X-STREET ATTICA DR.

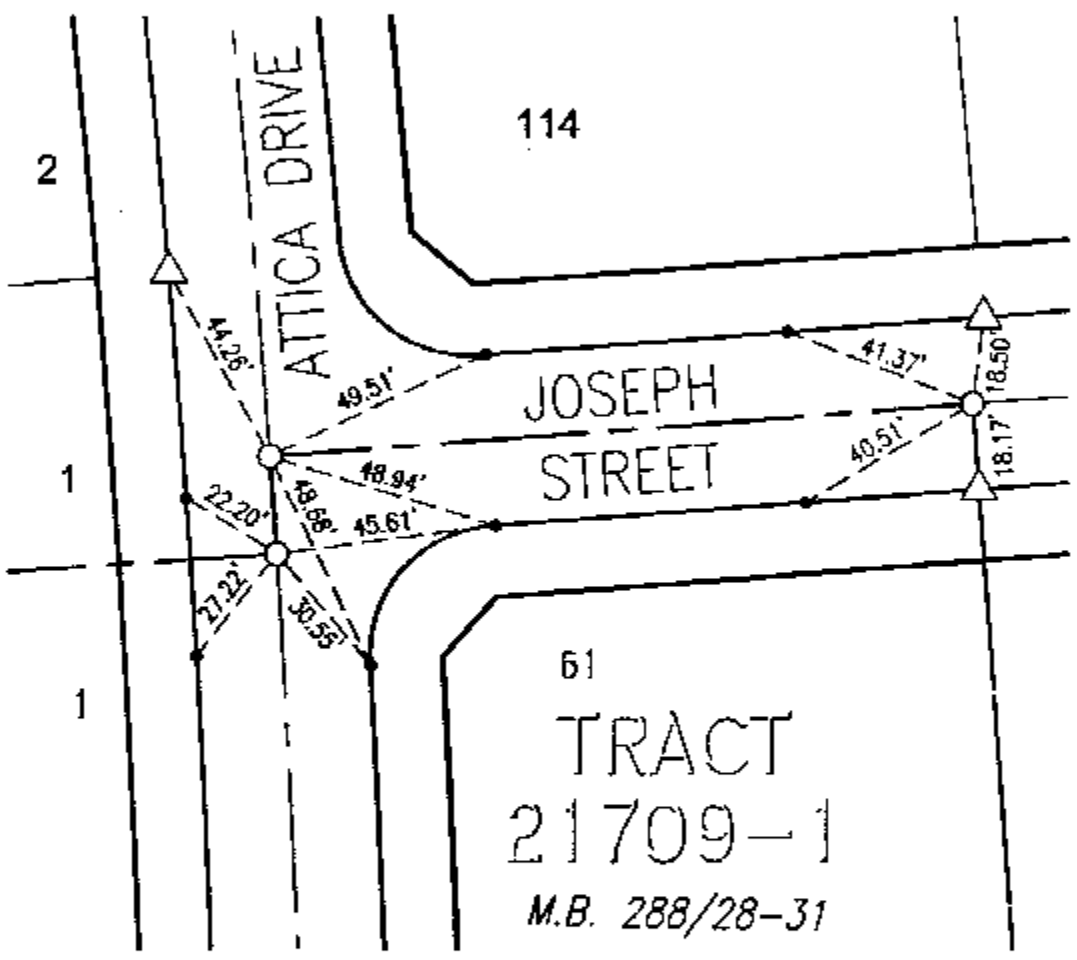
OFFICE USE ONLY

# TRACT 21709-2

M.B. 279/28-31

### LEGEND

- -Set Nail on T.C.
- △ -Set Nail and R.C.E. 17550 Tag in top of curb at the prolongation of side lot lines.
- -Set 1/2" Spike and R.C.E. 17550 Tag. Flush unless otherwise noted.



SCALE: 1"=40'  
 DATE: 12/2004  
 DR. BY: GEG  
 W.O.: 1127-005

--- OFFICIAL TIE PLAT ---  
 CITY OF RIVERSIDE

PREPARED BY: **CEG** Carty Engineering Group, Inc.  
 CIVIL ENGINEERING PLANNING SURVEYING  
 2010 IOWA Avenue, Suite 110, Riverside, CA 92507  
 P.O. Box 52050, Riverside, CA 92517 (951) 683-5234 FAX (951) 683-5301

SHEET  
**3**  
 OF 13 SHEETS