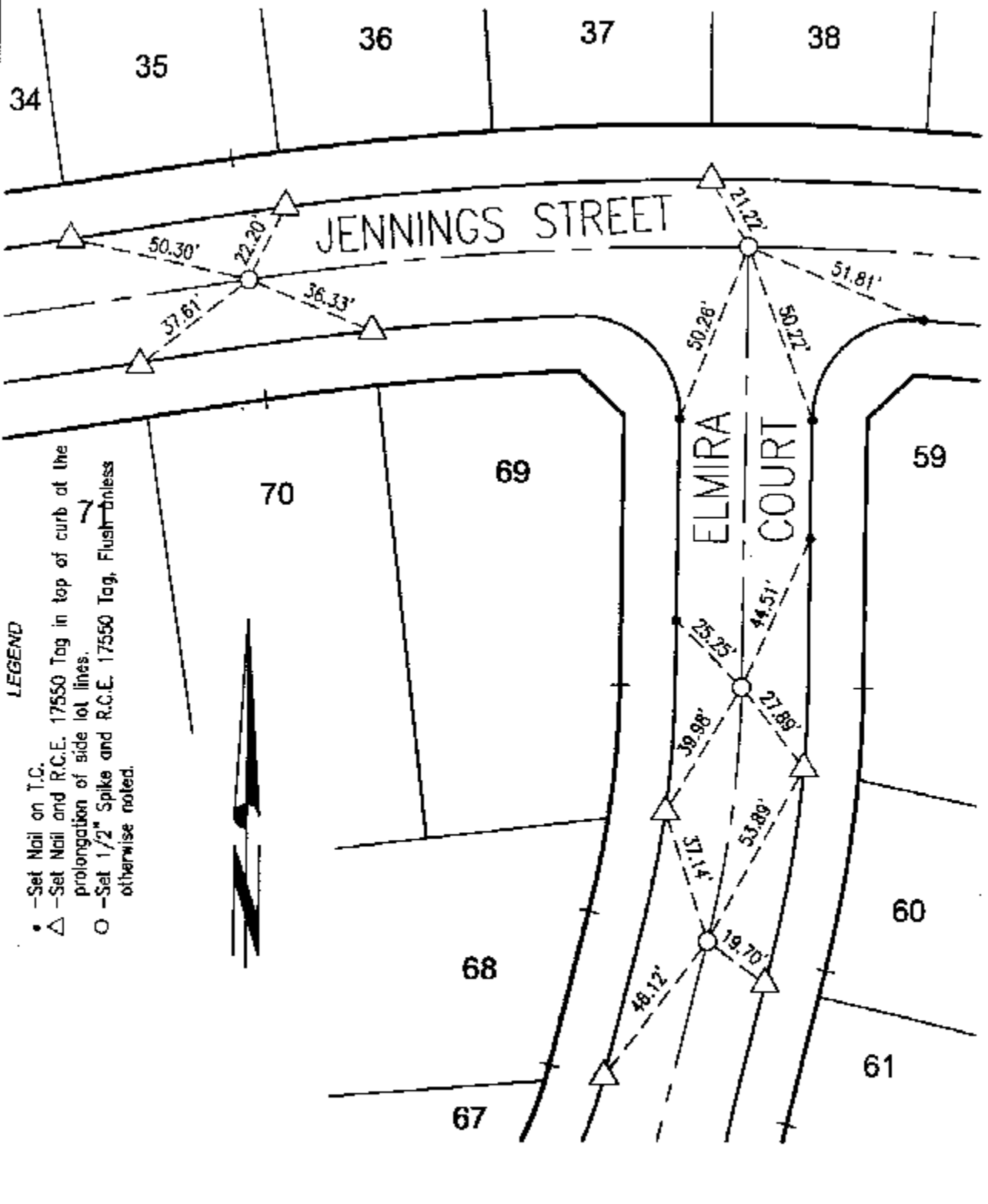


TRACT 21709-2

M.B. 379/28-37

11542.TIF

STREET JENNINGS ST. X-STREET ELMIRA CT. OFFICE USE ONLY



LEGEND

- -Set Nail on T.C.
- △ -Set Nail and R.C.E. 17550 Tag in top of curb at the prolongation of side lot lines.
- -Set 1/2" Spike and R.C.E. 17550 Tag, Flush unless otherwise noted.

SCALE: 1"=40'
DATE: 12/2004
DR. BY: CEG
W.O.: 1127-005

--- OFFICIAL TIE PLAT ---
CITY OF RIVERSIDE

PREPARED BY: **CEG** *County Engineering Group, Inc.*
CIVIL ENGINEERING PLANNING SURVEYING
2010 IOWA Avenue, Suite 110, Riverside, CA 92507
P.O. Box 52050, Riverside, CA 92517 (951) 683-5234 FAX (951) 683-5301

SHEET
7
OF 13 SHEETS