

TRACT 21709-2

M.B. 279/28-31

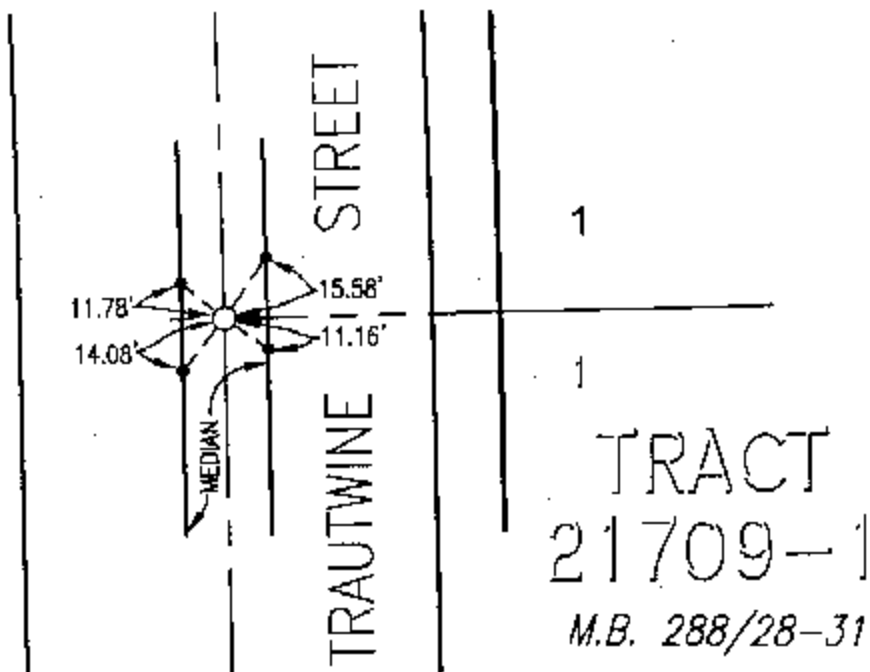
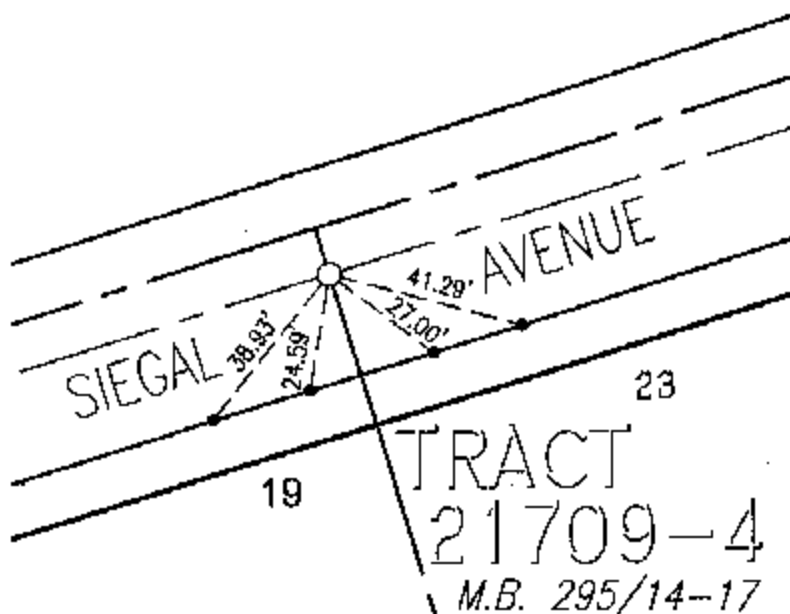
11548 TIE

STREET TRAUTWINE ST X-STREET SIEGAL AVE

OFFICE USE ONLY

LEGEND

- -Set Nail on T.C.
- △ -Set Nail and R.C.E. 17550 Tag in top of curb at the prolongation of side lot lines.
- -Set 1/2" Spike and R.C.E. 17550 Tag. Flush unless otherwise noted.



SCALE: 1"=40'

DATE: 12/2004

DR. BY: CEG

W.O.: 1127-005

--- OFFICIAL TIE PLAT ---

CITY OF RIVERSIDE

PREPARED BY: **CEG** *County Engineering Group, Inc.*
CIVIL ENGINEERING PLANNING SURVEYING

2010 IOWA Avenue, Suite 110, Riverside, CA 92507
P.O. Box 52050, Riverside, CA 92517 (951) 683-5234 FAX (951) 683-5301

SHEET

13

OF 13 SHEETS