

# TRACT 21709-4

M.B. 295/14-17

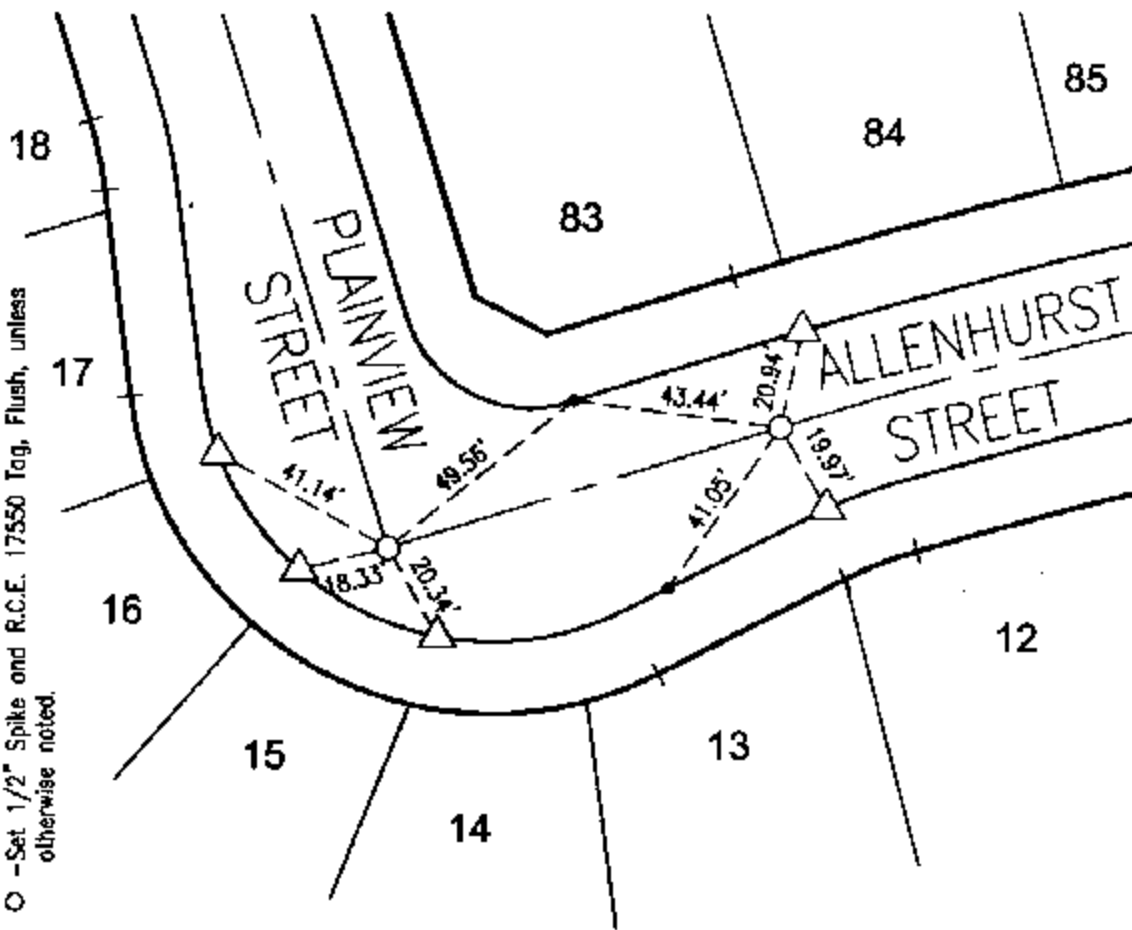
11550 TIE

STREET PLAINVIEW ST. X-STREET ALLENHURST ST.

OFFICE USE ONLY

**LEGEND**

- -Set Nail on I.C.
- △ -Set Nail and R.C.E. 17550 Tag in top of curb at the prolongation of side lot lines.
- -Set 1/2" Spike and R.C.E. 17550 Tag, Flush, unless otherwise noted.



SCALE: 1"=40'

DATE: 12/2004

DR. BY: CEG

W.O.: 1127-005

--- OFFICIAL TIE PLAT ---  
CITY OF RIVERSIDE

PREPARED BY: **CEG** *Carty Engineering Group, Inc.*  
CIVIL ENGINEERING PLANNING SURVEYING  
2010 IOWA Avenue, Suite 110, Riverside, CA 92507  
P.O. Box 52050, Riverside, CA 92517 (951) 683-5234 FAX (951) 683-5301

SHEET

2

OF 6 SHEETS