

11561.TIF

TRACT 21709-3

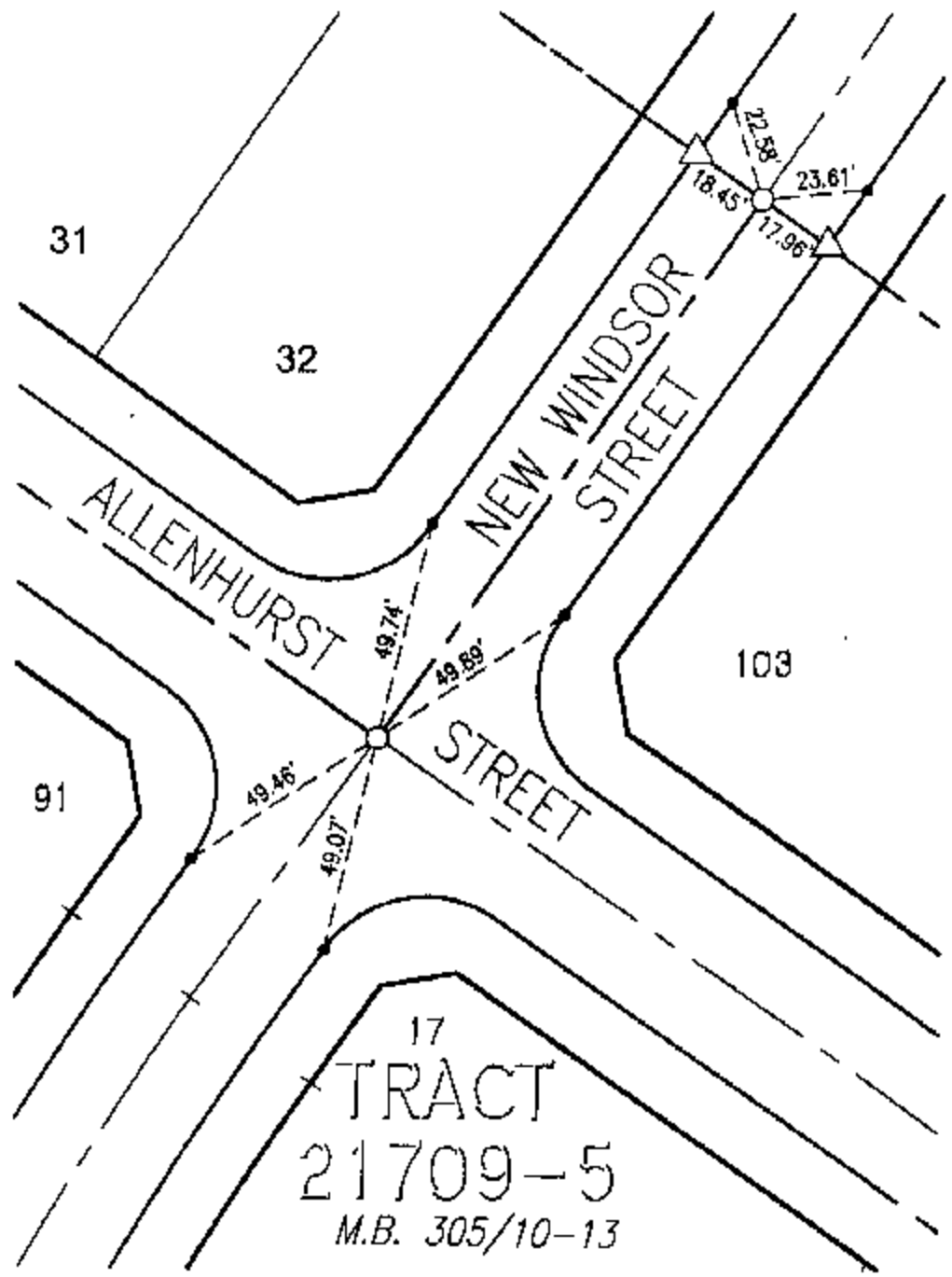
M.B. 294/91-93

STREET ALLENHURST ST. X-STREET NEW WINDSOR ST.

OFFICE USE ONLY

LEGEND

- -Set Nail on I.C.
- △ -Set Nail and R.C.E. 17550 Tog in top of curb at the prolongation of side lot lines.
- -Set 1/2" Spike and R.C.E. 17550 Tog, Flush, unless otherwise noted.



17
 TRACT
 21709-5
 M.B. 305/10-13

SCALE: 1"=40'
 DATE: 12/2004
 DR. BY: CEG
 W.O.: 1127-005

--- OFFICIAL TIE PLAT ---
 CITY OF RIVERSIDE

PREPARED BY: **CEG** *County Engineering Group, Inc.*
 CIVIL ENGINEERING PLANNING SURVEYING
 2010 IOWA Avenue, Suite 110, Riverside, CA 92507
 P.O. Box 52050, Riverside, CA 92517 (951) 683-5234 FAX (951) 683-5301

SHEET
 7
 OF 7 SHEETS