

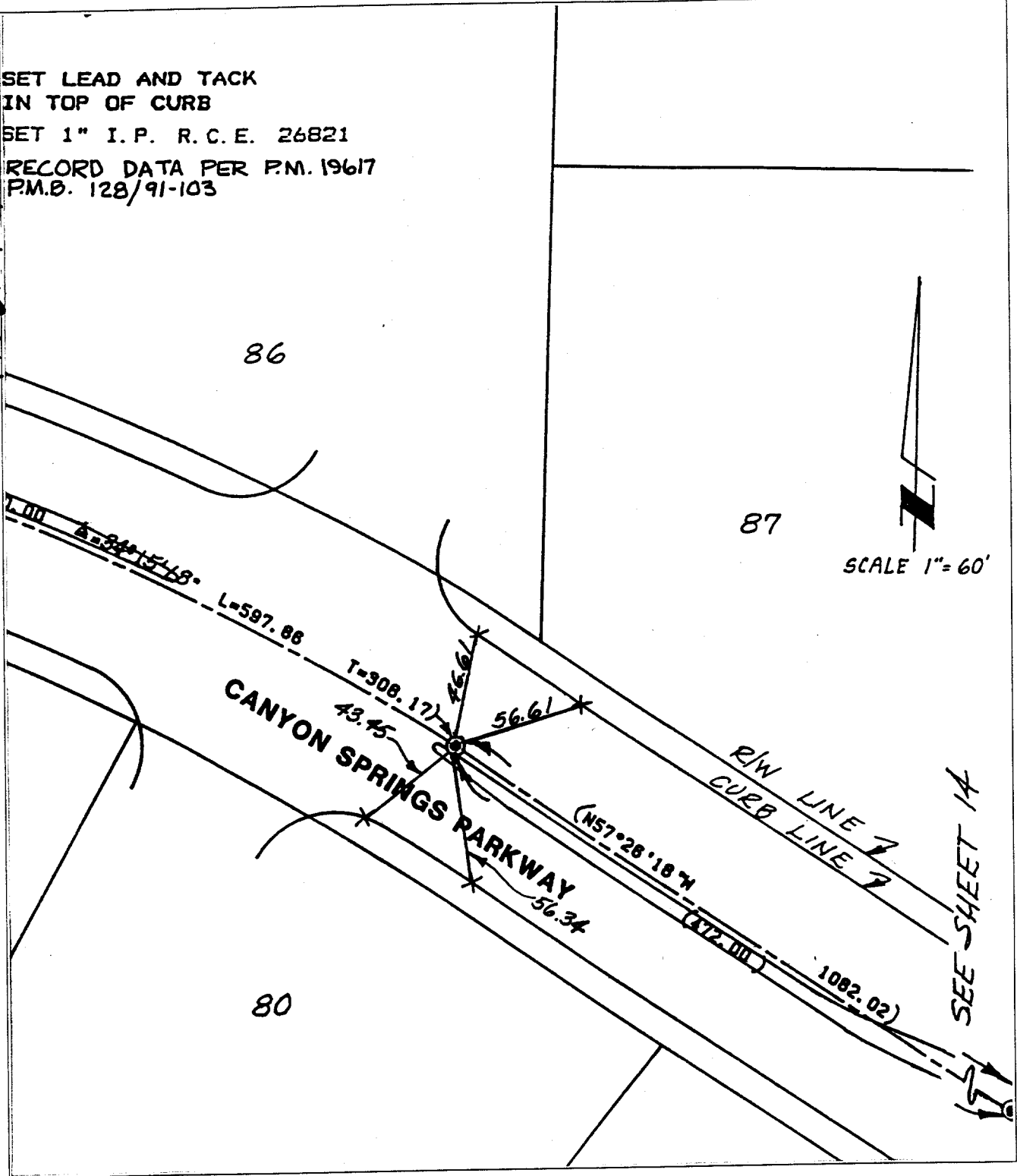
Street: CANYON SPRINGS PW

OFFICIAL USE ONLY

X-Street: W 1/2 of RIVERIDGE DR.

SET LEAD AND TACK  
IN TOP OF CURB  
SET 1" I. P. R. C. E. 26821  
RECORD DATA PER P.M. 19617  
P.M.O. 128/91-103

F.I.F. 158.71



SEE SHEET 1A

- ✕ FD. Ramset Nail on T/C
- FD. LD. & TK. on T/C
- FD. "C" Nail on T/C
- Set LD. & TK. on T/C

Scale: \_\_\_\_\_  
 Date: \_\_\_\_\_  
 Drawn by: \_\_\_\_\_  
 W.O.: \_\_\_\_\_  
 F.B.: \_\_\_\_\_

**OFFICIAL TIE PLAT**  
**CITY OF RIVERSIDE**

*These ties are for the purpose of perpetuating the found monumentation. No claim is made as to the relationship of the points or lines shown hereon to true boundary locations.*

Sheet 15 of 18  
 File No.: \_\_\_\_\_