

11584.TIF

Street:

GAINSBOROUGH DRIVE

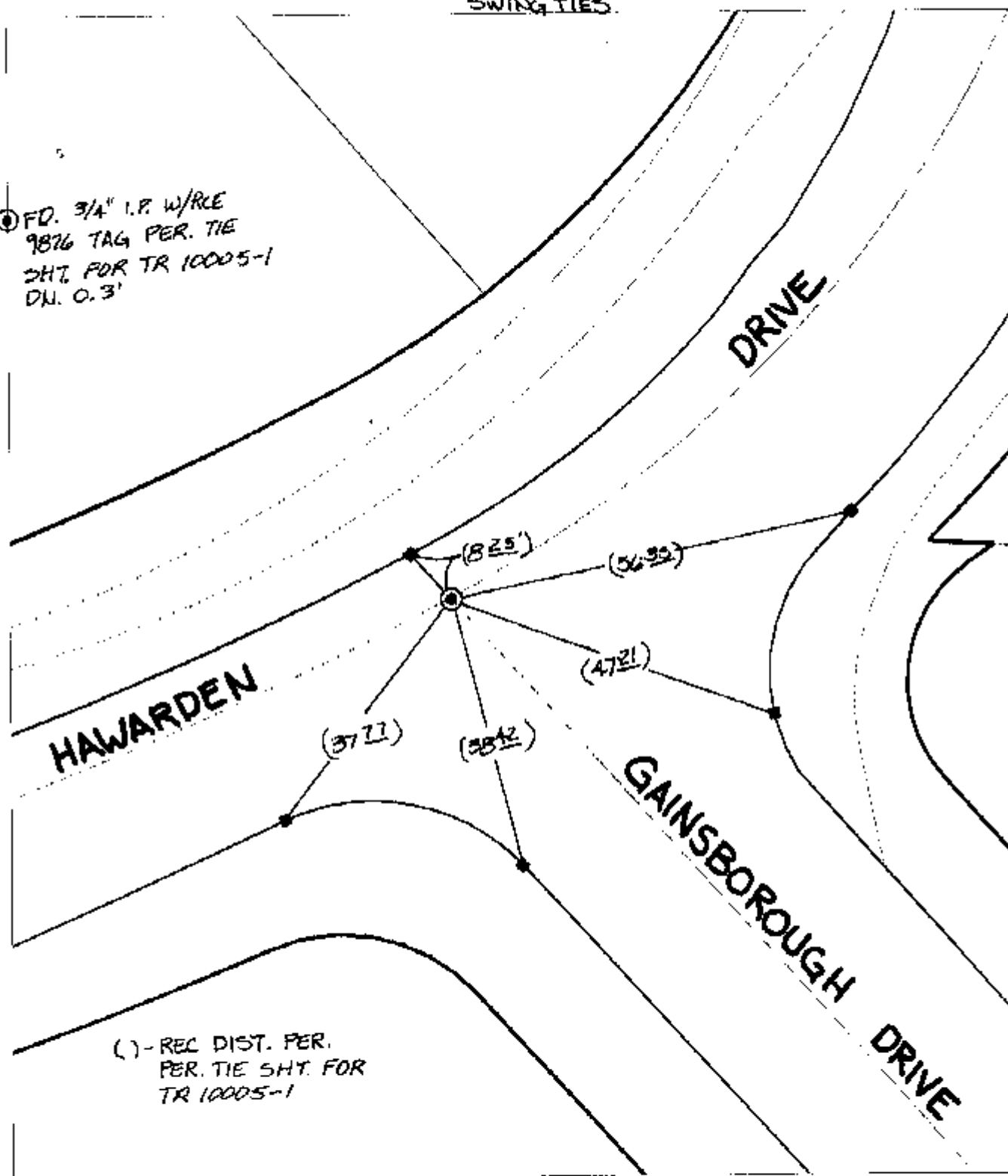
OFFICIAL USE ONLY

X-Street:

HAWARDEN DRIVE

SWING TIES

⊙ FD. 3/4" I.P. W/RCE
9876 TAG PER. TIE
SHT. FOR TR 10005-1
DN. 0.3'



() - REC. DIST. PER.
PER. TIE SHT. FOR
TR 10005-1

- ✕ FD. Ramset Nail on T/C
- FD. LD. & TK. on T/C
- FD. "C" Nail on T/C
- Set LD. & TK. on T/C

P.K. and City Engineer tag to be set @
surface after street construction is
complete. (If possible)

Scale: 1" = 20'

Date: 02/23/04

Drawn by: SURVEY

F.B.:

TR-Sec: T3SR5W-11

OFFICIAL TIE PLAT CITY OF RIVERSIDE

*These ties are for the purpose of perpetuating the found
monumentation. No claim is made as to the relationship of
the points or lines shown hereon to true boundary locations.*



Sheet 1 of 1

Cadme MB: 69-4