

11585.TIF

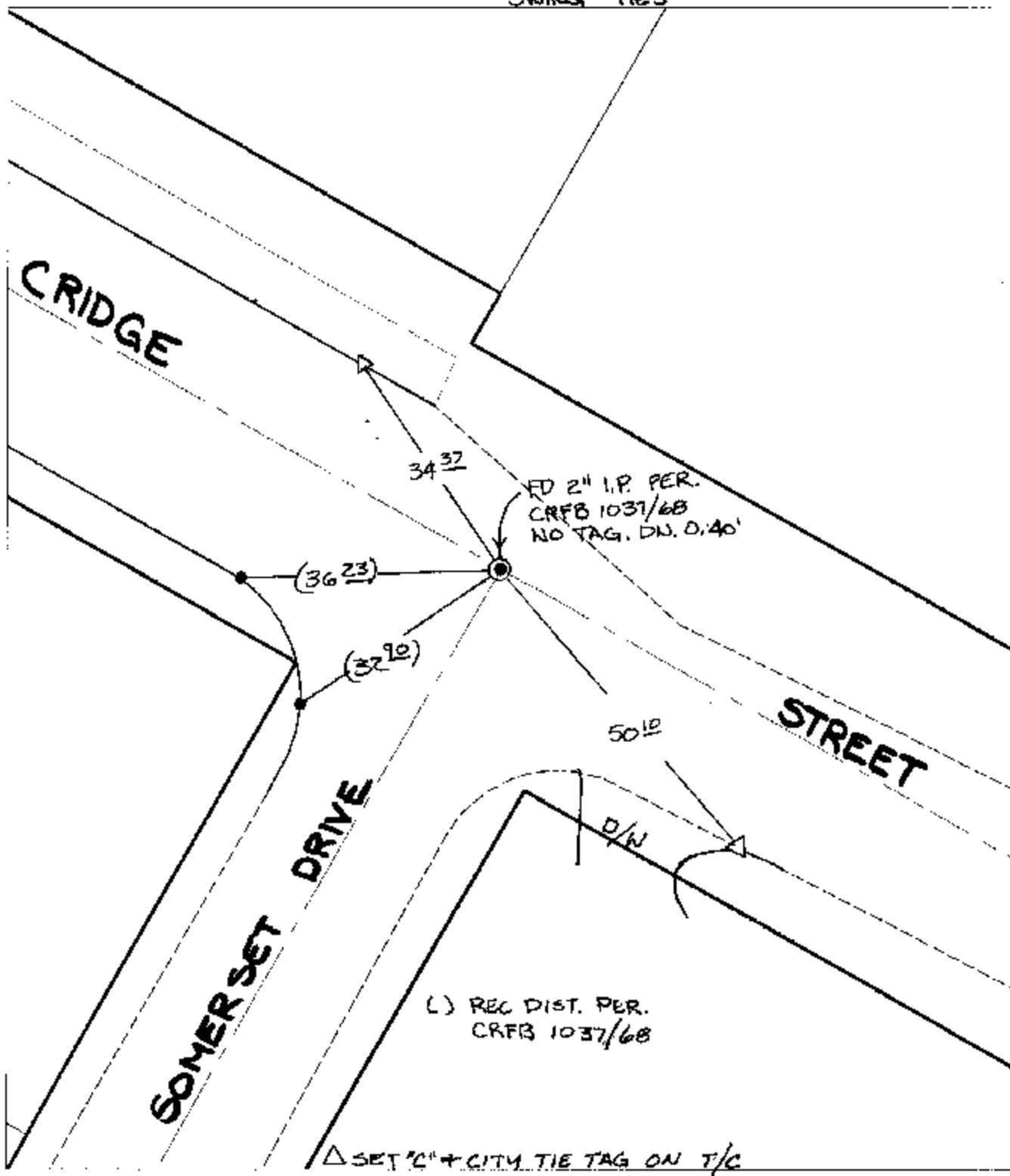
Street:

CARLTON PLACE

X-Street: OFFICIAL USE ONLY

SOMERSET DRIVE

SWING TIES



-

Scale: 1" = 20'

Date: 02/23/04

Drawn by: SURVEY

F.B.:

TR-Sec: T2SR5W-26

OFFICIAL TIE PLAT

CITY OF RIVERSIDE



These ties are for the purpose of perpetuating the found monumentation. No claim is made as to the relationship of the points or lines shown hereon to true boundary locations.

Sheet 1 of 1
Cadme MB: 40-5