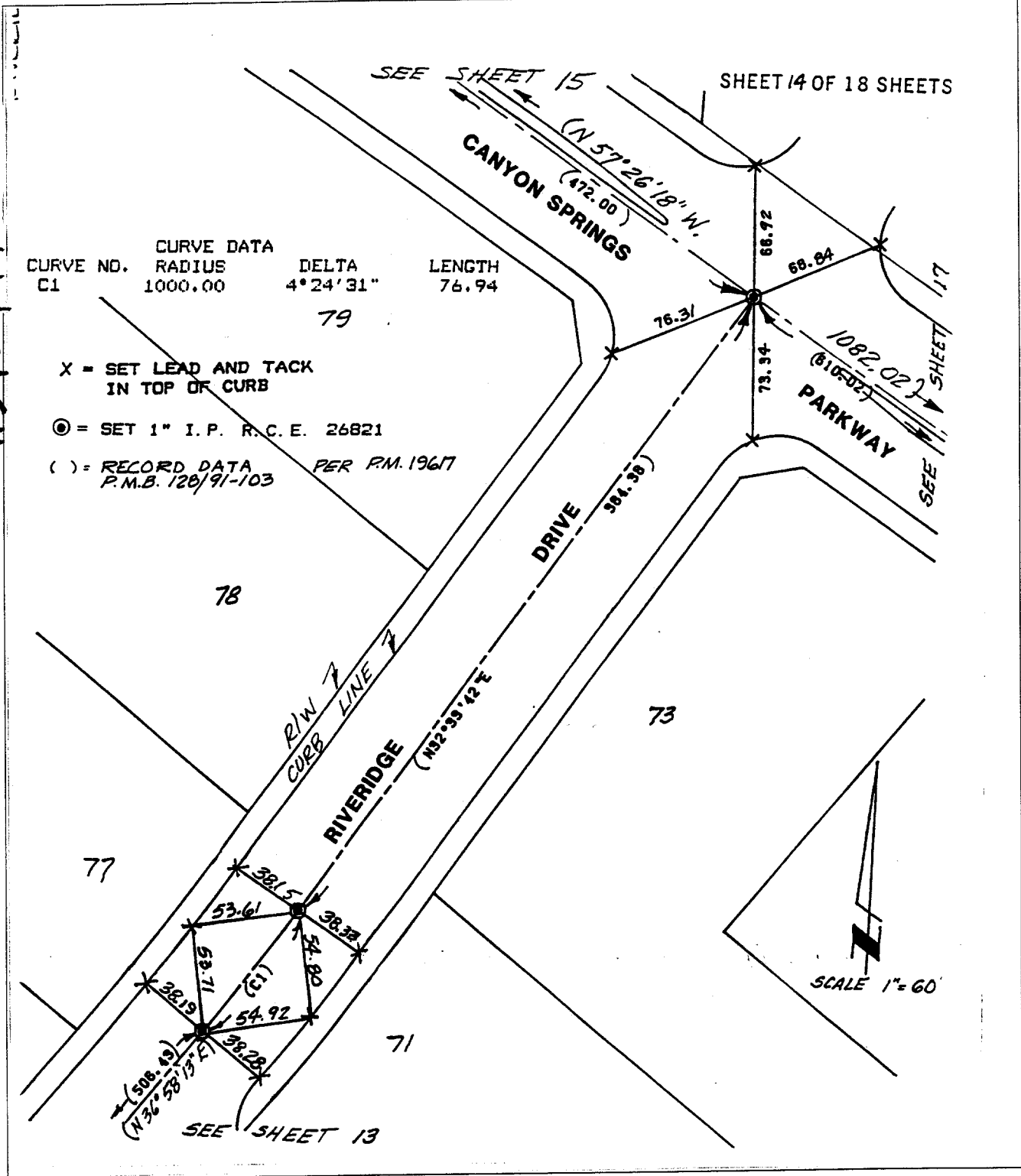


Street: CANYON SPRINGS PKWY

OFFICIAL USE ONLY

X-Street: RIVERIDGE DR

1159.TIF



CURVE NO.	RADIUS	DELTA	LENGTH
C1	1000.00	4° 24' 31"	76.94

79

X = SET LEAD AND TACK IN TOP OF CURB

⊙ = SET 1" I.P. R.C.E. 26821

( ) = RECORD DATA PER P.M. 1967 P.M.B. 128/91-103

- ✕ FD. Ramset Nail on T/C
- FD. "C" Nail on T/C

- FD. LD. & TK. on T/C
- Set LD. & TK. on T/C

Scale:

Date:

Drawn by:

W.O.:

F.B.:

## OFFICIAL TIE PLAT

### CITY OF RIVERSIDE

*These ties are for the purpose of perpetuating the found monumentation. No claim is made as to the relationship of the points or lines shown hereon to true boundary locations.*

Sheet 14 of 18

File No.: