

11611 TIE

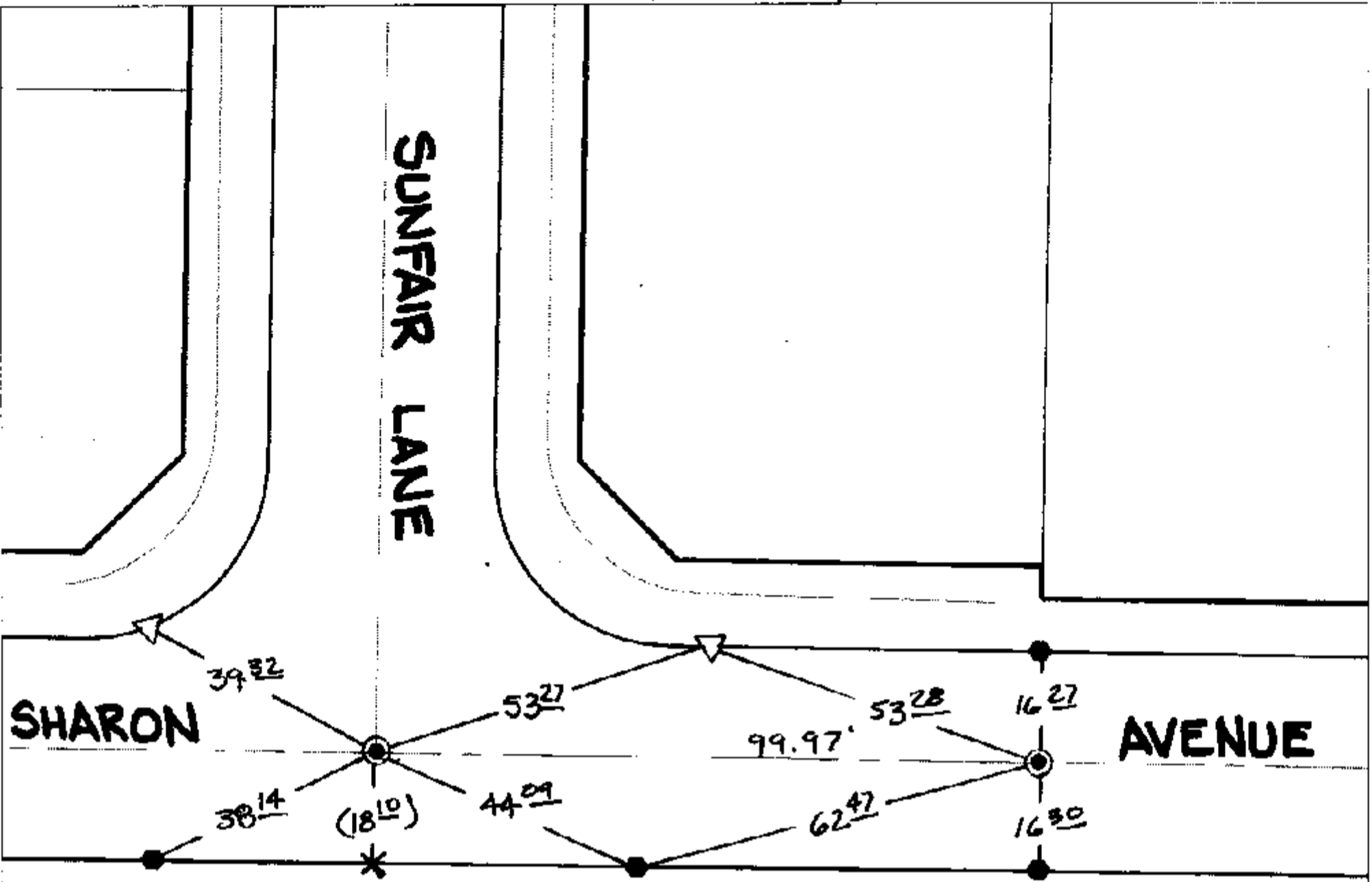
Street: SHARON AVENUE

X-Street: OFFICIAL USE ONLY

SUNFAIR LANE

TRANSIT & SWING TIE

SUNFAIR LANE



- FD RAMSET + RCE 16056 TAG ON T/C
- () REC. DIST. PER WAIN SCOTT + ASSOC. TIE SHT. FOR TR10818 MB 138/30-32
- FD 1" I.P. PER. WAIN SCOTT + ASSOC. TIE SHT FOR TR10818 DN. 0.2' MB. 138/30-32

✕ FD. Ramset Nail on T/C ● FD. LD. & TK. on T/C P.K. and City Engineer tag to be set @ surface after street construction is complete. (If possible)
 ■ FD. "C" Nail on T/C ○ Set LD. & TK. on T/C

Scale: 1" = 30'
 Date: 11/27/04
 Drawn by: survey
 F.B.:
 TR-Sec: T3SR6W-12

OFFICIAL TIE PLAT

CITY OF RIVERSIDE

These ties are for the purpose of perpetuating the found monumentation. No claim is made as to the relationship of the points or lines shown hereon to true boundary locations.



Sheet 1 of 1
 Cadme MB: 65-6