

11620.TIF

Street:

TOMLINSON AVENUE

X-Street:

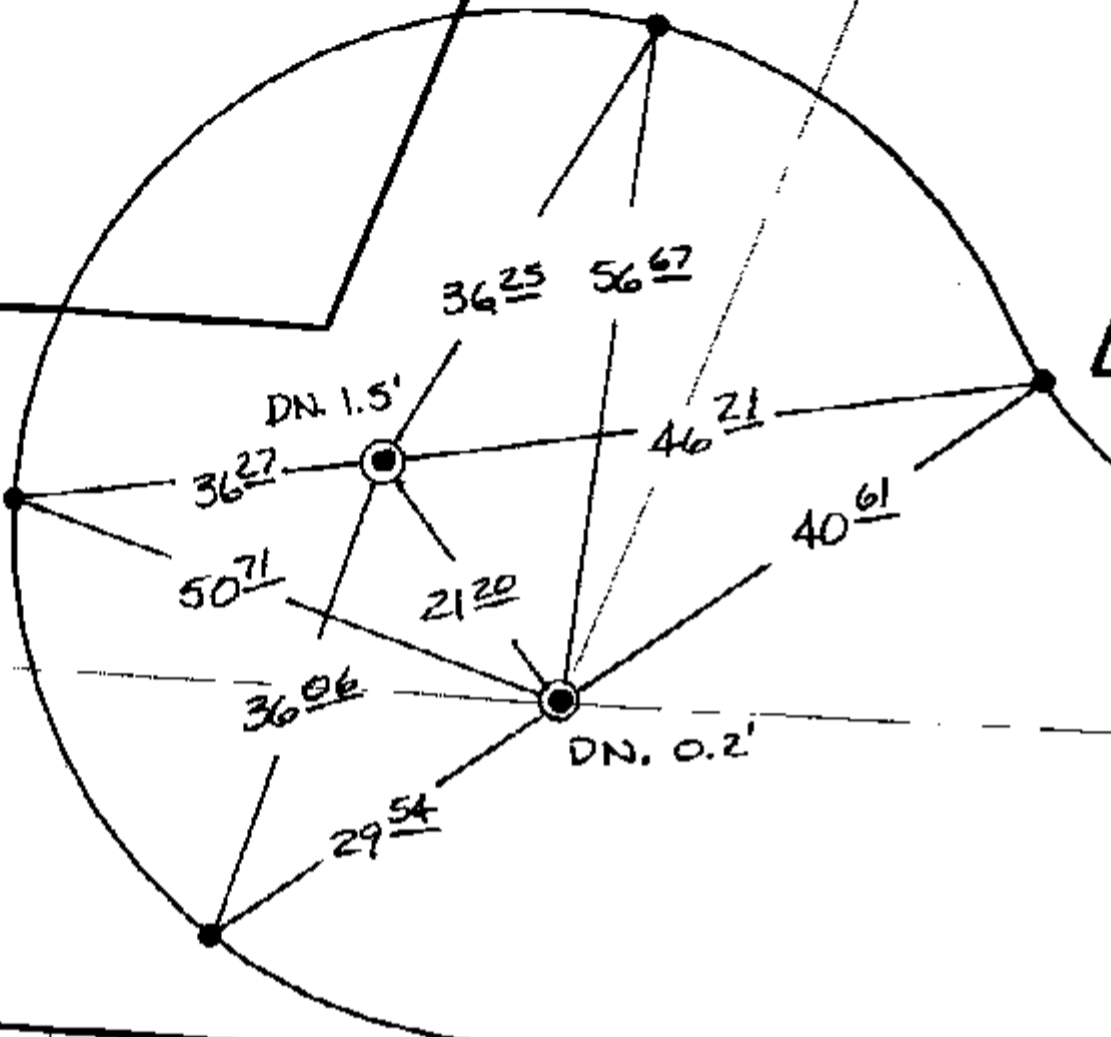
TOMLINSON AVENUE

CUL-DE-SAC

OFFICIAL USE ONLY

TRANSIT + SWING TIES

ALCAZAR AVENUE (VACATED)



⊙ FD. P.K. NL. + CITY ENGR. TAG PER. CITY TIES

- ✕ FD. Ramset Nail on T/C
- FD. LD. & TK. on T/C
- FD. "C" Nail on T/C
- Set LD. & TK. on T/C

P.K. and City Engineer tag to be set @ surface after street construction is complete. (If possible)

Scale: 1" = 20'

Date: 11/27/04

Drawn by: survey

F.B.:

TR-Sec: T3SR6W-12

## OFFICIAL TIE PLAT

### CITY OF RIVERSIDE

*These ties are for the purpose of perpetuating the found monumentation. No claim is made as to the relationship of the points or lines shown hereon to true boundary locations.*



Sheet 1 of 1

Cadme MB: 65-5