

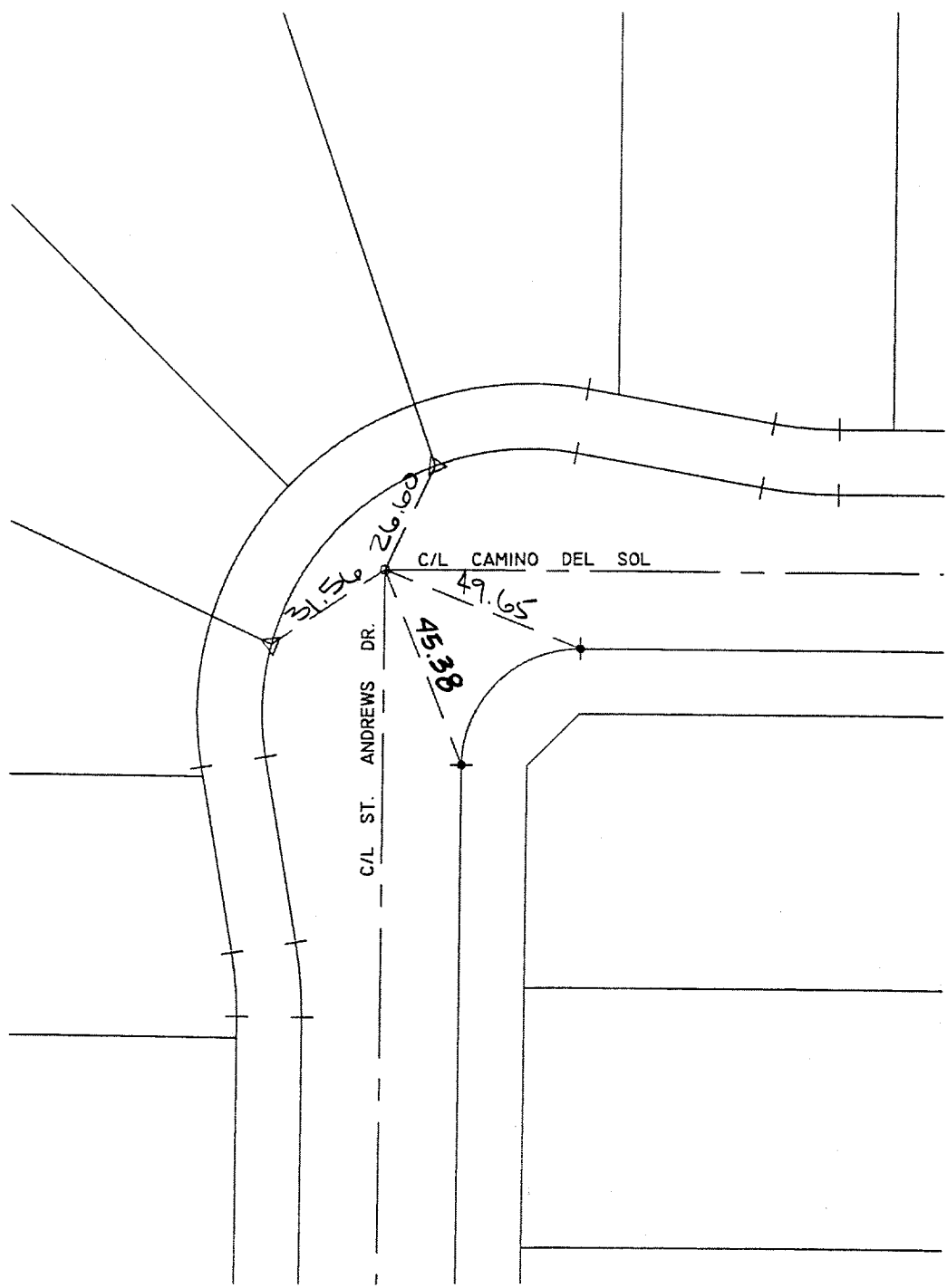
ADILLA, GEO, BU 4-39

STREET: CAMINO DEL SOL X-STREET ST. ANDREWS DR.

OFFICE USE ONLY

**LEGEND**

- - SET 1" IP. w/RCE 17550 PASTIC PLUG FLUSH
- SET RAMSET NAIL ON T.C.
- △ - SET NAIL w/RCE 17550 TAG ON T.C.
- ◉ - SET SPIKE w/WASHER STAMPED RCE 17550 FLUSH



TR.27982-3

163.717

SCALE: 1"=40'

DATE: 9.3.98

DR. BY: PAP

F.B.:

**OFFICIAL TIE PLAT  
CITY OF RIVERSIDE**

**CEG** CANTY ENGINEERING GROUP, INC.  
 CIVIL ENGINEERING - PLANNING - SURVEYING  
 2020 IOWA AVENUE, SUITE A-102, P.O. BOX 52050, RIVERSIDE, CA 92517  
 TEL (909) 683 - 5234 FAX (909) 683 - 5301

SHEET

**4**

OF 9 SHEETS

FILE NO:  
**1032-006**