

11649.TIF

Street:

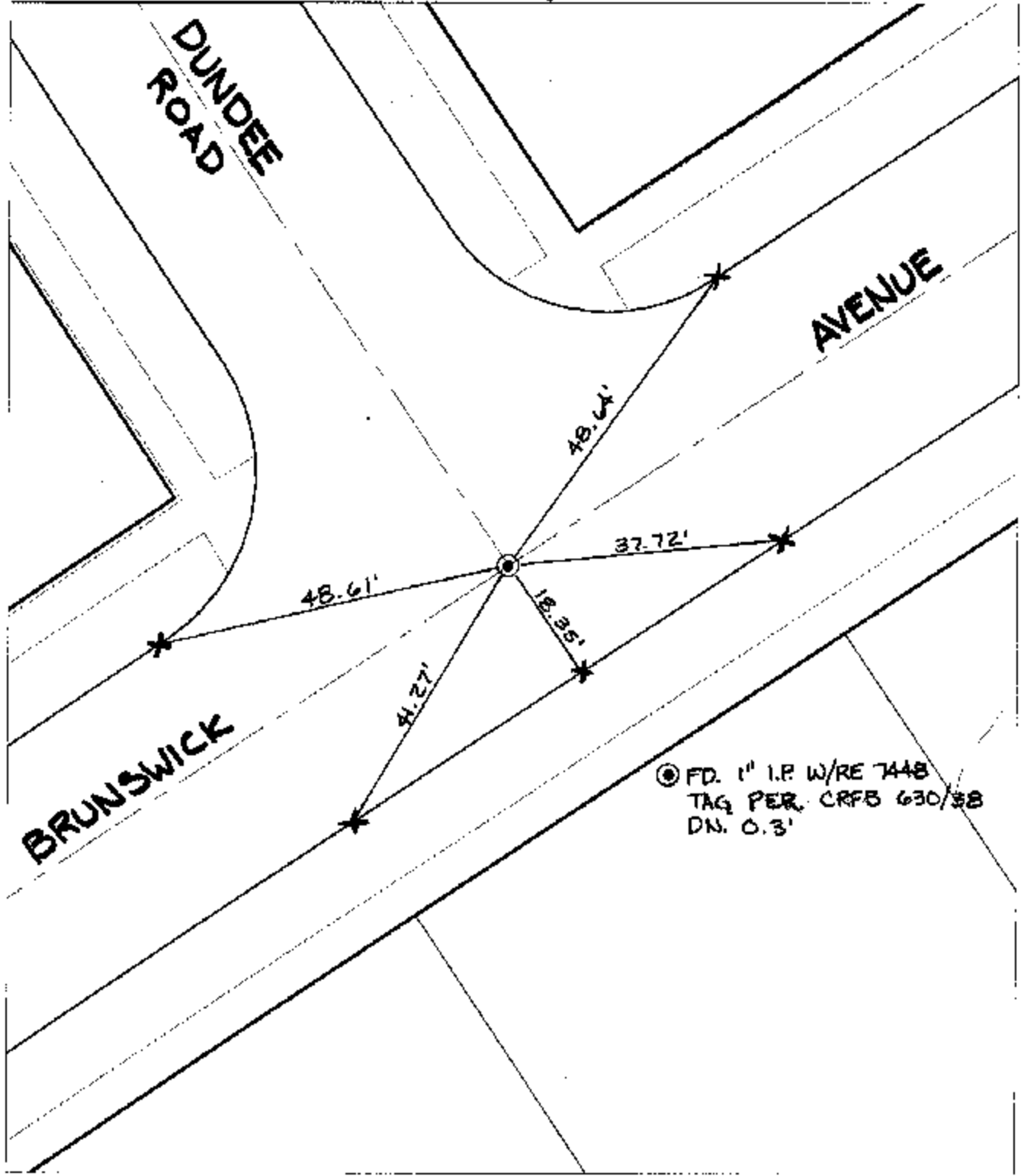
BRUNSWICK AVE

OFFICIAL USE ONLY

X-Street:

DUNDEE ROAD

SWING TIES



⊙ FD. 1" I.P. W/RE 7448  
TAG PER. CRFB 630/38  
DN. 0.3'

- ✕ FD. Ramset Nail on T/C      ● FD. LD. & TK. on T/C      P.K. and City Engineer tag to be set @ surface after street construction is complete. (if possible)
- FD. "C" Nail on T/C      ○ Set LD. & TK. on T/C

Scale: 1" = 20'  
Date: 10/21/04  
Drawn by: scurtis  
F.B.:  
TR-Sec: T3SR5W-6

## OFFICIAL TIE PLAT

### CITY OF RIVERSIDE

*These ties are for the purpose of perpetuating the found monumentation. No claim is made as to the relationship of the points or lines shown hereon to true boundary locations.*



Sheet 1 of 1  
Cadme MB: 51-7