

11657.TIF

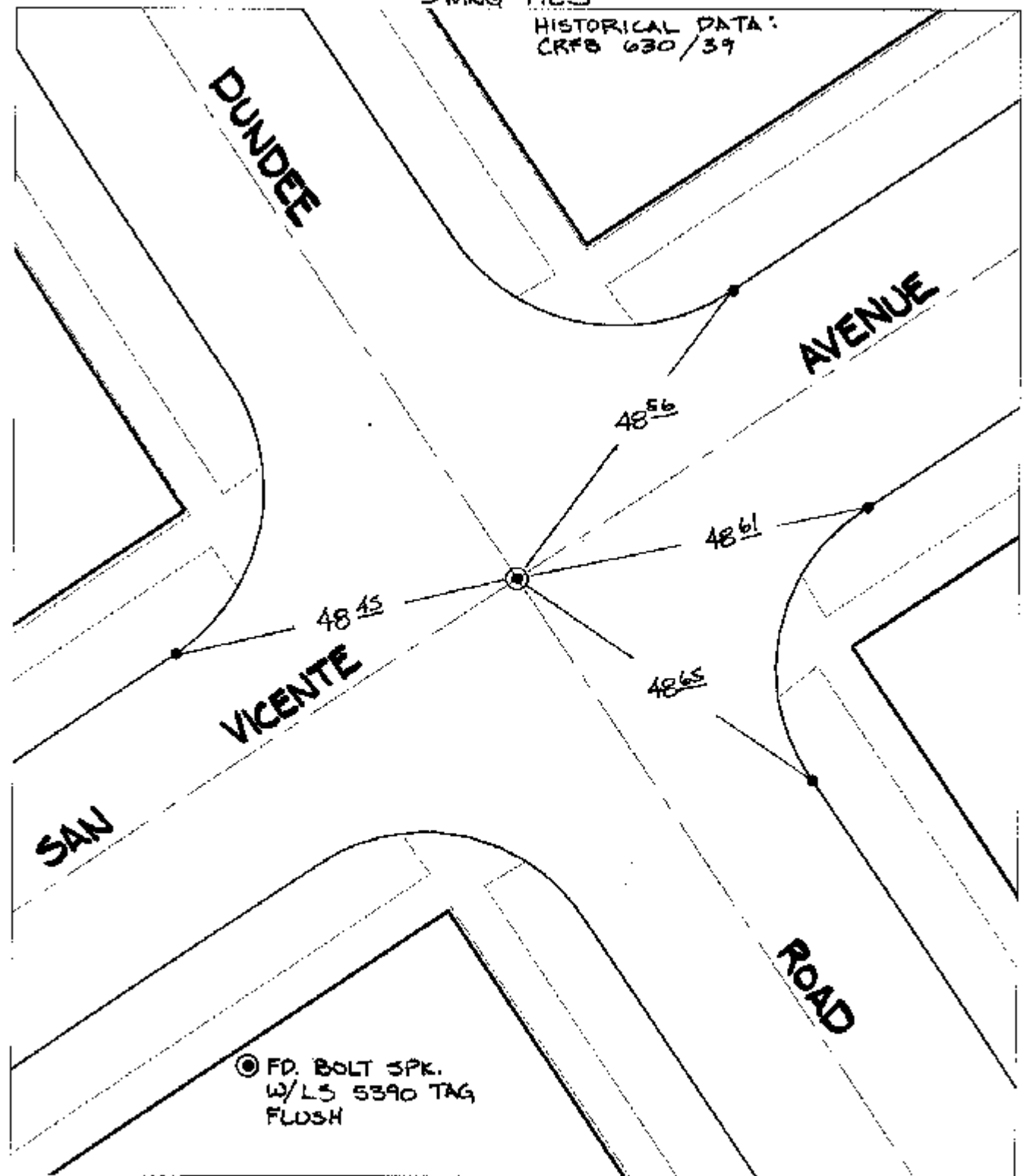
Street:

SAN VICENTE AVE

X-Street:  
OFFICIAL USE ONLY

DUNDEE ROAD

SWING TIES  
HISTORICAL DATA:  
CRFB 630/39



● FD. BOLT 3PK.  
W/L.S 5390 TAG  
FLUSH

- ✕ FD. Ramset Nail on T/C    ● FD. LD. & TK. on T/C
- FD. "C" Nail on T/C      ○ Set LD. & TK. on T/C

P.K. and City Engineer tag to be set @  
surface after street construction is  
complete. (If possible)

Scale: 1" = 20'  
 Date: 10/21/04  
 Drawn by: scurtis  
 F.B.:  
 TR-Sec: T3SR5W-6

## OFFICIAL TIE PLAT

### CITY OF RIVERSIDE

*These ties are for the purpose of perpetuating the found  
 monumentation. No claim is made as to the relationship of  
 the points or lines shown hereon to true boundary locations.*



Sheet 1 of 1  
 Cadme MB: 51-7